

## ARG40036 anti-INTS10 antibody

Package: 100 µl  
Store at: -20°C

### Summary

Product Description	Rabbit Polyclonal antibody recognizes INTS10
Tested Reactivity	Hu, Ms
Tested Application	ICC/IF, WB
Host	Rabbit
Clonality	Polyclonal
Isotype	IgG
Target Name	INTS10
Species	Human
Immunogen	Recombinant fusion protein corresponding to aa. 451-710 of Human INTS10 (NP_060612.2).
Conjugation	Un-conjugated
Alternate Names	Int10; Integrator complex subunit 10; INT10; C8orf35

### Application Instructions

Application table	Application	Dilution
	ICC/IF	1:50 - 1:200
	WB	1:500 - 1:2000
Application Note	* The dilutions indicate recommended starting dilutions and the optimal dilutions or concentrations should be determined by the scientist.	
Positive Control	Mouse brain and HeLa	
Observed Size	70 kDa	

### Properties

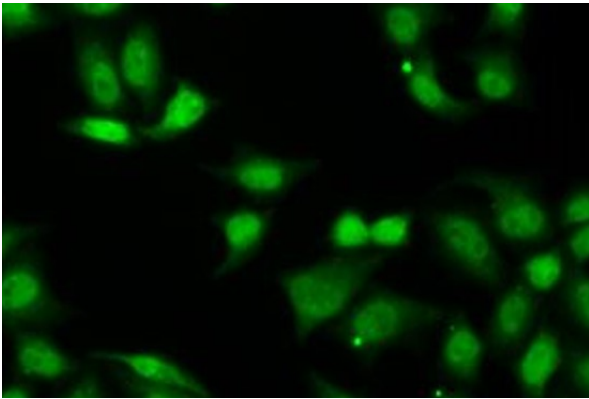
Form	Liquid
Purification	Affinity purified.
Buffer	PBS (pH 7.3), 0.02% Sodium azide and 50% Glycerol.
Preservative	0.02% Sodium azide
Stabilizer	50% Glycerol
Storage instruction	For continuous use, store undiluted antibody at 2-8°C for up to a week. For long-term storage, aliquot and store at -20°C. Storage in frost free freezers is not recommended. Avoid repeated freeze/thaw cycles. Suggest spin the vial prior to opening. The antibody solution should be gently mixed before use.
Note	For laboratory research only, not for drug, diagnostic or other use.

## Bioinformation

---

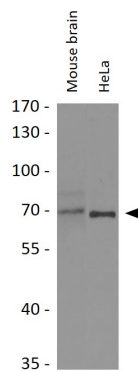
Gene Symbol	INTS10
Gene Full Name	integrator complex subunit 10
Background	INTS10 is a subunit of the Integrator complex, which associates with the C-terminal domain of RNA polymerase II large subunit (POLR2A; MIM 180660) and mediates 3-prime end processing of small nuclear RNAs U1 (RNU1; MIM 180680) and U2 (RNU2; MIM 180690) (Baillat et al., 2005 [PubMed 16239144]).[supplied by OMIM, Mar 2008]
Function	Component of the Integrator complex, a complex involved in the small nuclear RNAs (snRNA) U1 and U2 transcription and in their 3'-box-dependent processing. The Integrator complex is associated with the C-terminal domain (CTD) of RNA polymerase II largest subunit (POLR2A) and is recruited to the U1 and U2 snRNAs genes. [UniProt]
Calculated Mw	82 kDa
Cellular Localization	Nucleus. [UniProt]

## Images



ARG40036 anti-INTS10 antibody ICC/IF image

Immunofluorescence: A549 cells stained with ARG40036 anti-INTS10 antibody.



ARG40036 anti-INTS10 antibody WB image

Western blot: 25 µg of Mouse brain and HeLa cell lysates stained with ARG40036 anti-INTS10 antibody at 1:1000 dilution.