

ARG40030 anti-CRISPLD2 antibody

Package: 100 µl
Store at: -20°C

Summary

Product Description	Rabbit Polyclonal antibody recognizes CRISPLD2
Tested Reactivity	Ms, Rat
Tested Application	WB
Host	Rabbit
Clonality	Polyclonal
Isotype	IgG
Target Name	CRISPLD2
Species	Human
Immunogen	Recombinant fusion protein corresponding to aa. 140-430 of Human CRISPLD2 (NP_113664.1).
Conjugation	Un-conjugated
Alternate Names	CRISP11; CRISP-11; LCCL domain-containing cysteine-rich secretory protein 2; LCRISP2; Cysteine-rich secretory protein LCCL domain-containing 2; Cysteine-rich secretory protein 11

Application Instructions

Application table	Application	Dilution
	WB	1:500 - 1:2000
Application Note	* The dilutions indicate recommended starting dilutions and the optimal dilutions or concentrations should be determined by the scientist.	
Positive Control	Rat pancreas and Mouse pancreas	
Observed Size	~ 55 kDa	

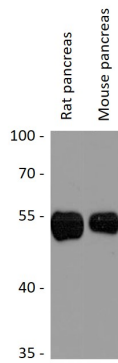
Properties

Form	Liquid
Purification	Affinity purified.
Buffer	PBS (pH 7.3), 0.02% Sodium azide and 50% Glycerol.
Preservative	0.02% Sodium azide
Stabilizer	50% Glycerol
Storage instruction	For continuous use, store undiluted antibody at 2-8°C for up to a week. For long-term storage, aliquot and store at -20°C. Storage in frost free freezers is not recommended. Avoid repeated freeze/thaw cycles. Suggest spin the vial prior to opening. The antibody solution should be gently mixed before use.
Note	For laboratory research only, not for drug, diagnostic or other use.

Bioinformation

Gene Symbol	CRISPLD2
Gene Full Name	cysteine-rich secretory protein LCCL domain containing 2
Function	Promotes matrix assembly. [UniProt]
Calculated Mw	56 kDa
Cellular Localization	Secreted. [UniProt]

Images



ARG40030 anti-CRISPLD2 antibody WB image

Western blot: 25 µg of Rat pancreas and Mouse pancreas lysates stained with ARG40030 anti-CRISPLD2 antibody at 1:3000 dilution.