

ARG40026
anti-SCYL2 antibodyPackage: 100 µl
Store at: -20°C

Summary

Product Description	Rabbit Polyclonal antibody recognizes SCYL2
Tested Reactivity	Hu, Ms, Rat
Tested Application	ICC/IF, WB
Host	Rabbit
Clonality	Polyclonal
Isotype	IgG
Target Name	SCYL2
Species	Human
Immunogen	Recombinant fusion protein corresponding to aa. 1-300 of Human SCYL2 (NP_060458.3).
Conjugation	Un-conjugated
Alternate Names	SCY1-like protein 2; Coated vesicle-associated kinase of 104 kDa; CVAK104

Application Instructions

Application table	Application	Dilution
	ICC/IF	1:50 - 1:200
	WB	1:500 - 1:2000
Application Note	* The dilutions indicate recommended starting dilutions and the optimal dilutions or concentrations should be determined by the scientist.	
Positive Control	Rat brain and Mouse brain	
Observed Size	104 kDa	

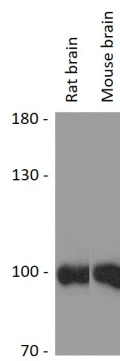
Properties

Form	Liquid
Purification	Affinity purified.
Buffer	PBS (pH 7.3), 0.02% Sodium azide and 50% Glycerol.
Preservative	0.02% Sodium azide
Stabilizer	50% Glycerol
Storage instruction	For continuous use, store undiluted antibody at 2-8°C for up to a week. For long-term storage, aliquot and store at -20°C. Storage in frost free freezers is not recommended. Avoid repeated freeze/thaw cycles. Suggest spin the vial prior to opening. The antibody solution should be gently mixed before use.
Note	For laboratory research only, not for drug, diagnostic or other use.

Bioinformation

Gene Symbol	SCYL2
Gene Full Name	SCY1-like, kinase-like 2
Function	Component of AP2-containing clathrin coated structures at the plasma membrane or of endocytic coated vesicles. Probable serine/threonine-protein kinase that phosphorylates, in vitro, the beta2-subunit of the plasma membrane adapter complex AP2 and other proteins in presence of poly-L-lysine. Has no detectable kinase activity in vitro. May regulate clathrin-dependent trafficking between the TGN and/or the endosomal system. [UniProt]
Calculated Mw	104 kDa
PTM	According to PubMed:15809293, autophosphorylated in presence of poly-L-lysine. [UniProt]
Cellular Localization	Cytoplasm, perinuclear region. Cytoplasmic vesicle, clathrin-coated vesicle. Golgi apparatus, trans-Golgi network membrane. Endosome membrane. Note=According to PubMed:15809293, plasma membrane-associated in clathrin-coated vesicles. According to PubMed:16914521, colocalizes to the trans-Golgi network (TGN) and to endosomal membranes with clathrin, transferrin and plasma membrane adapter AP1 and AP3 complexes. [UniProt]

Images



ARG40026 anti-SCYL2 antibody WB image

Western blot: 25 µg of Rat brain and Mouse brain lysates stained with ARG40026 anti-SCYL2 antibody at 1:3000 dilution.