

ARG40024
anti-PARVB antibodyPackage: 100 µl
Store at: -20°C

Summary

Product Description	Rabbit Polyclonal antibody recognizes PARVB
Tested Reactivity	Hu, Ms, Rat
Tested Application	WB
Host	Rabbit
Clonality	Polyclonal
Isotype	IgG
Target Name	PARVB
Species	Human
Immunogen	Recombinant fusion protein corresponding to aa. 1-100 of Human PARVB (NP_037459.2).
Conjugation	Un-conjugated
Alternate Names	Affixin; CGI-56; Beta-parvin

Application Instructions

Application table	Application	Dilution
	WB	1:500 - 1:2000
Application Note	* The dilutions indicate recommended starting dilutions and the optimal dilutions or concentrations should be determined by the scientist.	
Positive Control	Rat heart, Mouse heart and A375	
Observed Size	42 kDa	

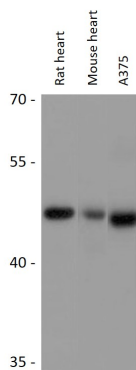
Properties

Form	Liquid
Purification	Affinity purified.
Buffer	PBS (pH 7.3), 0.02% Sodium azide and 50% Glycerol.
Preservative	0.02% Sodium azide
Stabilizer	50% Glycerol
Storage instruction	For continuous use, store undiluted antibody at 2-8°C for up to a week. For long-term storage, aliquot and store at -20°C. Storage in frost free freezers is not recommended. Avoid repeated freeze/thaw cycles. Suggest spin the vial prior to opening. The antibody solution should be gently mixed before use.
Note	For laboratory research only, not for drug, diagnostic or other use.

Bioinformation

Gene Symbol	PARVB
Gene Full Name	parvin, beta
Background	This gene encodes a member of the parvin family of actin-binding proteins, which play a role in cytoskeleton organization and cell adhesion. These proteins are associated with focal contacts and contain calponin homology domains that bind to actin filaments. This family member binds to alphaPIX and alpha-actinin, and it can inhibit the activity of integrin-linked kinase. This protein also functions in tumor suppression. Alternative splicing of this gene results in multiple transcript variants. [provided by RefSeq, Aug 2011]
Function	Adapter protein that plays a role in integrin signaling via ILK and in activation of the GTPases CDC42 and RAC1 by guanine exchange factors, such as ARHGEF6. Is involved in the reorganization of the actin cytoskeleton and formation of lamellipodia. Plays a role in cell adhesion, cell spreading, establishment or maintenance of cell polarity, and cell migration. [UniProt]
Calculated Mw	42 kDa
Cellular Localization	Cell junction, focal adhesion. Cell membrane; Peripheral membrane protein; Cytoplasmic side. Cytoplasm, cytoskeleton. Cell projection, lamellipodium. Cytoplasm, myofibril, sarcomere. Cytoplasm, myofibril, sarcomere, Z line. Note=Constituent of focal adhesions. Detected at the tips of the leading edge of cells. Colocalizes with F-actin at the tips of lamellipodia. [UniProt]

Images



ARG40024 anti-PARVB antibody WB image

Western blot: 25 µg of Rat heart, Mouse heart and A375 cell lysates stained with ARG40024 anti-PARVB antibody at 1:3000 dilution.