

ARG40020 anti-RBM26 antibody

Package: 100 µl
Store at: -20°C

Summary

Product Description	Rabbit Polyclonal antibody recognizes RBM26
Tested Reactivity	Ms, Rat
Tested Application	WB
Host	Rabbit
Clonality	Polyclonal
Isotype	IgG
Target Name	RBM26
Species	Human
Immunogen	Recombinant fusion protein corresponding to aa. 65-140 of Human RBM26 (NP_071401.3).
Conjugation	Un-conjugated
Alternate Names	PPP1R132; SE70-2; ARRS2; CTCL tumor antigen se70-2; PRO1777; ZC3H17; C13orf10; RNA-binding protein 26; RNA-binding motif protein 26

Application Instructions

Application table	Application	Dilution
	WB	1:500 - 1:2000
Application Note	* The dilutions indicate recommended starting dilutions and the optimal dilutions or concentrations should be determined by the scientist.	
Positive Control	Rat liver and Mouse brain	
Observed Size	120 kDa	

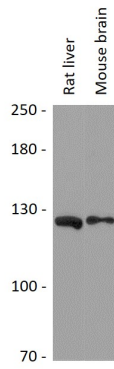
Properties

Form	Liquid
Purification	Affinity purified.
Buffer	PBS (pH 7.3), 0.02% Sodium azide and 50% Glycerol.
Preservative	0.02% Sodium azide
Stabilizer	50% Glycerol
Storage instruction	For continuous use, store undiluted antibody at 2-8°C for up to a week. For long-term storage, aliquot and store at -20°C. Storage in frost free freezers is not recommended. Avoid repeated freeze/thaw cycles. Suggest spin the vial prior to opening. The antibody solution should be gently mixed before use.
Note	For laboratory research only, not for drug, diagnostic or other use.

Bioinformation

Gene Symbol	RBM26
Gene Full Name	RNA binding motif protein 26
Calculated Mw	114 kDa

Images



ARG40020 anti-RBM26 antibody WB image

Western blot: 25 µg of Rat liver and Mouse brain lysates stained with ARG40020 anti-RBM26 antibody at 1:3000 dilution.