

ARG40019 anti-LRRC7 antibody

Package: 100 µl
Store at: -20°C

Summary

Product Description	Rabbit Polyclonal antibody recognizes LRRC7
Tested Reactivity	Hu, Ms, Rat
Tested Application	ICC/IF, WB
Host	Rabbit
Clonality	Polyclonal
Isotype	IgG
Target Name	LRRC7
Species	Human
Immunogen	Recombinant fusion protein corresponding to aa. 730-890 of Human LRRC7 (NP_065845.1).
Conjugation	Un-conjugated
Alternate Names	Leucine-rich repeat-containing protein 7; Densin-180; Densin; Protein LAP1; DENGIN

Application Instructions

Application table	Application	Dilution
	ICC/IF	1:50 - 1:200
	WB	1:500 - 1:2000
Application Note	* The dilutions indicate recommended starting dilutions and the optimal dilutions or concentrations should be determined by the scientist.	
Positive Control	Rat brain and Mouse brain	
Observed Size	172 kDa	

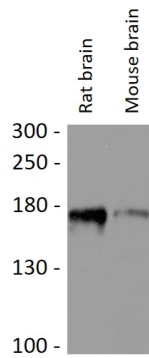
Properties

Form	Liquid
Purification	Affinity purified.
Buffer	PBS (pH 7.3), 0.02% Sodium azide and 50% Glycerol.
Preservative	0.02% Sodium azide
Stabilizer	50% Glycerol
Storage instruction	For continuous use, store undiluted antibody at 2-8°C for up to a week. For long-term storage, aliquot and store at -20°C. Storage in frost free freezers is not recommended. Avoid repeated freeze/thaw cycles. Suggest spin the vial prior to opening. The antibody solution should be gently mixed before use.
Note	For laboratory research only, not for drug, diagnostic or other use.

Bioinformation

Gene Symbol	LRRC7
Gene Full Name	leucine rich repeat containing 7
Function	Required for normal synaptic spine architecture and function. Necessary for DISC1 and GRM5 localization to postsynaptic density complexes and for both N-methyl D-aspartate receptor-dependent and metabotropic glutamate receptor-dependent long term depression. [UniProt]
Calculated Mw	173 kDa
Cellular Localization	Cytoplasm. Cell junction, synapse, postsynaptic cell membrane, postsynaptic density. [UniProt]

Images



ARG40019 anti-LRRC7 antibody WB image

Western blot: 25 μ g of Rat brain and Mouse brain lysates stained with ARG40019 anti-LRRC7 antibody at 1:3000 dilution.