

ARG30353 Phospho IκB alpha Antibody Duo (Total, pS32/36)

Package: 1 pair
Store at: -20°C

Component

Cat. No.	Component Name	Host clonality	Reactivity	Application	Package
ARG51651	anti-IκB alpha phospho (Ser32 / Ser36) antibody	Rabbit pAb	Hu, Ms, Rat	ICC/IF, IHC-P, WB	50 μl
ARG40630	anti-IκB alpha antibody	Rabbit pAb	Hu, Ms, Rat	ICC/IF, IHC-P, IP, WB	50 μl

Summary

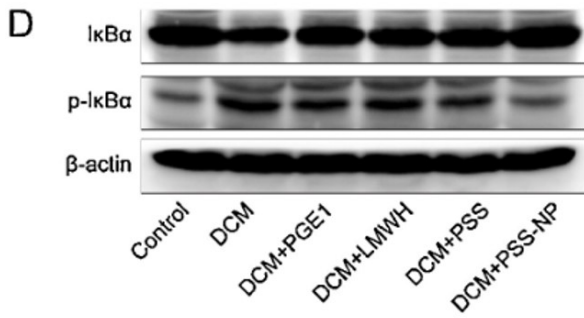
Product Description	<p>IκB-α inhibits the activity of dimeric NF-kappa-B/REL complexes by trapping REL dimers in the cytoplasm through masking of their nuclear localization signals. On cellular stimulation by immune and proinflammatory responses, triggers IκB-α phosphorylated at Ser32/36 and promotes IκB-α ubiquitination and degradation, enabling the dimeric NFκB to translocate to the nucleus and activate transcription.</p> <p>ARG30053 IκB-α phospho Duos (Total, pS32/36), includes an antibody reacts total IκB-α protein and an antibody recognizes IκB-α only when Ser32/36 of IκB-α is phosphorylated. This antibody Duos could be used in evaluation of total or Ser32/36 phosphorylated IκB-α protein in IκB-α/NFκB signaling and IκB-α/NFκB regulation studies.</p>
Alternate Names	Phospho nuclear factor of kappa light polypeptide gene enhancer in B-cells inhibitor, alpha (IκB alpha) Antibody Duo (Total, pS32/36)

Properties

Storage instruction	For continuous use, store undiluted antibody at 2-8°C for up to a week. For long-term storage, aliquot and store at -20°C or below. Storage in frost free freezers is not recommended. Avoid repeated freeze/thaw cycles. Suggest spin the vial prior to opening. The antibody solution should be gently mixed before use.
----------------------------	--

Bioinformation

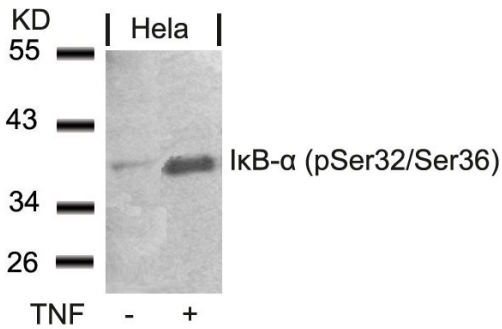
Background	Phospho IκB alpha Antibody Duo Total, pS32/36 anti IκB alpha antibody 2E10 B11 F6, N terminal 2E10 B11 F6 NF kappa B inhibitor alpha I kappa B alpha IκB alpha IκappaBalpha Major histocompatibility complex enhancer binding protein MAD3 2E10 B11 F6 IκB alpha IκB alpha anti IκB alpha phospho Ser32/Ser36 antibody NFKBIA nuclear factor of kappa light polypeptide gene enhancer in B cells inhibitor, alpha IκBA MAD3 NFKBI NF kappa B inhibitor alpha I kappa B alpha IκB alpha IκappaBalpha Major histocompatibility complex enhancer binding protein MAD3 IκBA MAD3 NFKBI IκB alpha IκB alpha
-------------------	--



ARG51651 anti-IκB alpha phospho (Ser32 / Ser36) antibody WB image

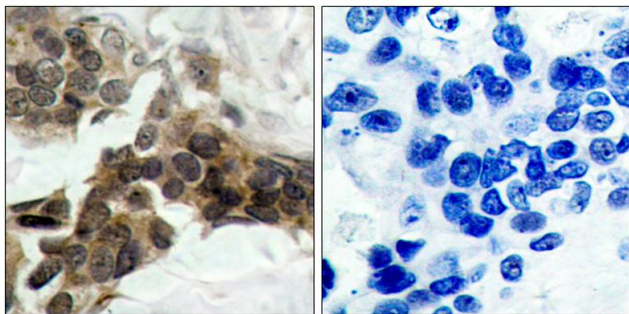
Western blot: Rat cardiac stained with ARG51651 anti-IκB alpha phospho (Ser32 / Ser36) antibody at dilution.

From Yongjun Mao et al. Biomed Pharmacother. (2020), [doi: 10.1016/j.biopha.2019.109280](https://doi.org/10.1016/j.biopha.2019.109280), Fig. 6D.



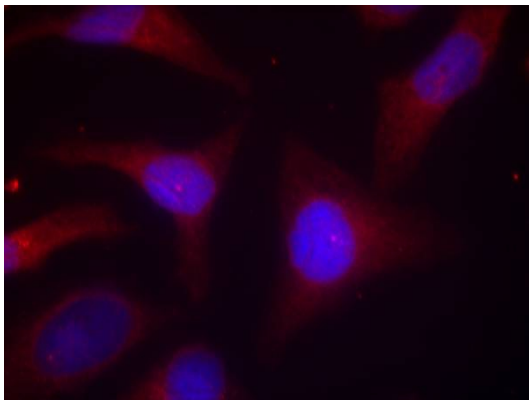
ARG51651 anti-IκB alpha phospho (Ser32 / Ser36) antibody WB image

Western blot: Extracts from HeLa cells untreated or treated with TNF stained with ARG51651 anti-IκB alpha phospho (Ser32 / Ser36) antibody.



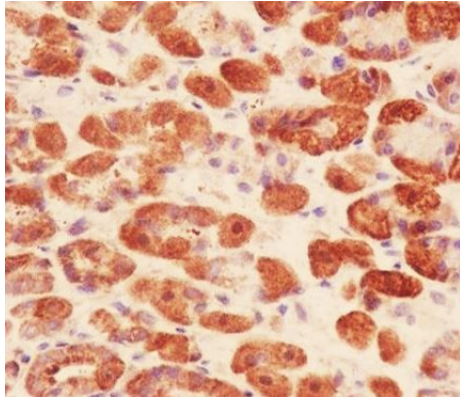
ARG51651 anti-IκB alpha phospho (Ser32 / Ser36) antibody IHC-P image

Immunohistochemistry: Paraffin-embedded Human breast carcinoma tissue stained with ARG51651 anti-IκB alpha phospho (Ser32 / Ser36) antibody (left) or the same antibody preincubated with blocking peptide (right).



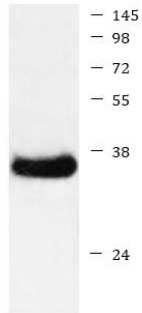
ARG51651 anti-IκB alpha phospho (Ser32 / Ser36) antibody ICC/IF image

Immunofluorescence: methanol-fixed HeLa cells stained with ARG51651 anti-IκB alpha phospho (Ser32 / Ser36) antibody.



ARG40630 anti-IKB alpha antibody IHC-P image

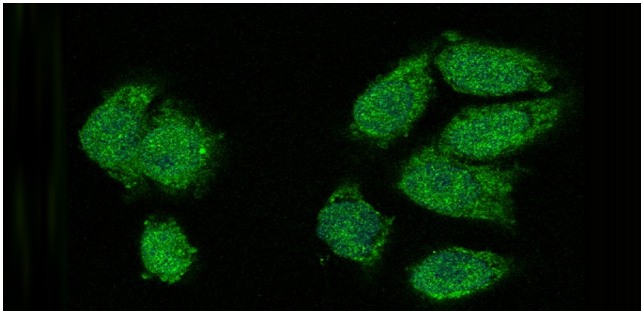
Immunohistochemistry: Paraffin-embedded Mouse stomach tissue stained with ARG40630 anti-IKB alpha antibody.



HeLa

ARG40630 anti-IKB alpha antibody WB image

Western blot: HeLa cell lysate stained with ARG40630 anti-IKB alpha antibody.



ARG40630 anti-IKB alpha antibody ICC/IF image

Immunofluorescence: HeLa stained with ARG40630 anti-IKB alpha antibody.
