

## ARG30352 ISGF3 / GAF Antibody Panel

Package: 1 kit  
Store at: -20°C

### Component

Cat. No.	Component Name	Host clonality	Reactivity	Application	Package
ARG43795	anti-IRF9 antibody	Rabbit pAb	Hu	FACS, ICC/IF, WB	20 µl
ARG51548	anti-STAT1 phospho (Tyr701) antibody	Rabbit pAb	Hu, Ms, Rat	ICC/IF, IHC-P, WB	20 µl
ARG66600	anti-STAT2 phospho (Tyr690) antibody	Rabbit pAb	Hu, Ms, Rat	IHC-P, WB	20 µg
ARG51041	anti-STAT1 antibody	Rabbit pAb	Hu, Ms, Rat	IHC-P, WB	20 µl
ARG57599	anti-STAT2 antibody	Rabbit pAb	Hu, Ms, Rat	ICC/IF, IHC-P, WB	20 µl

### Summary

Target Name ISGF3 / GAF Pathway Antibody

### Properties

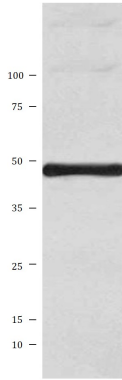
**Storage instruction** For continuous use, store undiluted antibody at 2-8°C for up to a week. For long-term storage, aliquot and store at -20°C or below. Storage in frost free freezers is not recommended. Avoid repeated freeze/thaw cycles. Suggest spin the vial prior to opening. The antibody solution should be gently mixed before use.

**Note** For laboratory research only, not for drug, diagnostic or other use.

### Bioinformation

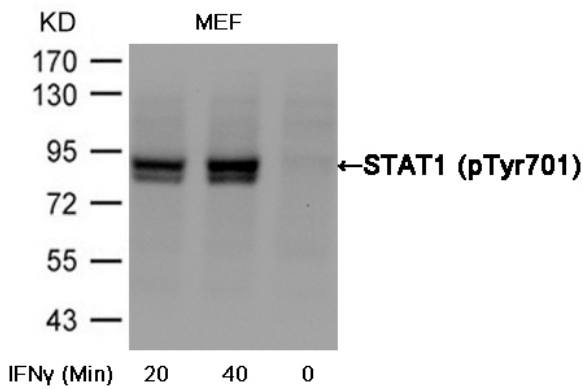
**Gene Full Name** Antibody Panel for ISGF3/GAF Pathway

**Highlight** Related news:  
[ISGF3/GAF and JAK2-STAT3 antibody panels are launched](#)



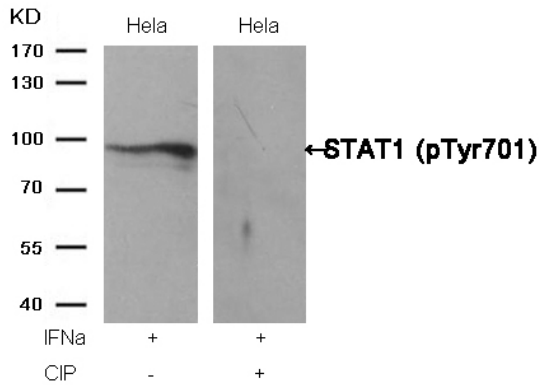
ARG43795 anti-IRF9 antibody WB image

Western blot: Jurkat cell lysate stained with ARG43795 anti-IRF9 antibody.



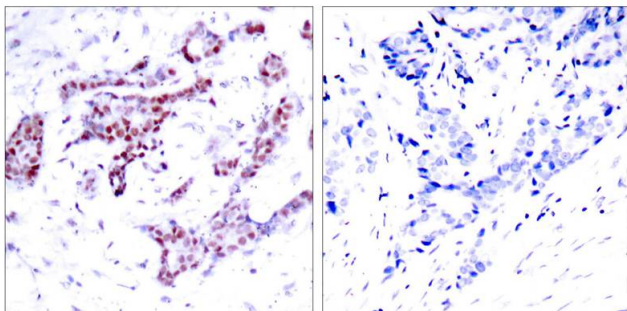
ARG51548 anti-STAT1 phospho (Tyr701) antibody WB image

Western blot: Extracts from MEF cells untreated or treated with interferon- $\gamma$  (IFN $\gamma$ ) stained with ARG51548 anti-STAT1 phospho (Tyr701) antibody.



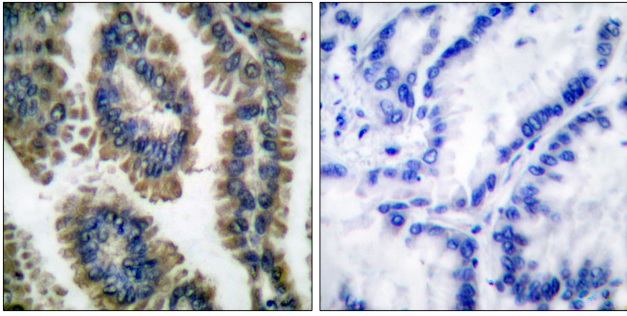
ARG51548 anti-STAT1 phospho (Tyr701) antibody WB image

Western blot: Extracts from HeLa cells, treated with IFN $\alpha$  or calf intestinal phosphatase (CIP), stained with ARG51548 anti-STAT1 phospho (Tyr701) antibody.



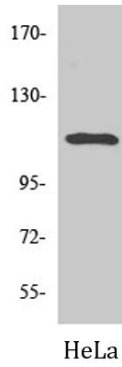
ARG51548 anti-STAT1 phospho (Tyr701) antibody IHC-P image

Immunohistochemistry: Paraffin-embedded Human breast carcinoma tissue stained with ARG51548 anti-STAT1 phospho (Tyr701) antibody (left) or the same antibody preincubated with blocking peptide (right).



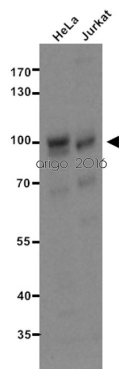
#### ARG66600 anti-STAT2 phospho (Tyr690) antibody IHC-P image

Immunohistochemistry: Paraffin-embedded Human lung carcinoma tissue stained with ARG66600 anti-STAT2 phospho (Tyr690) antibody. The picture on the right is blocked with the phosphopeptide.



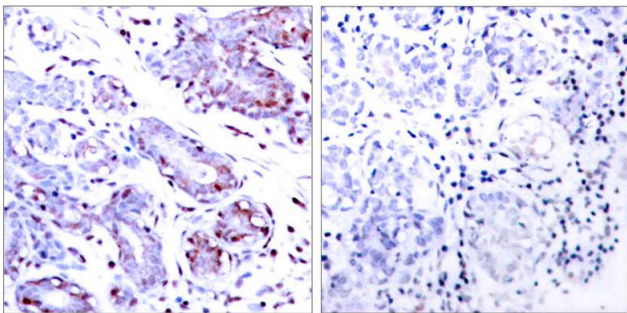
#### ARG66600 anti-STAT2 phospho (Tyr690) antibody WB image

Western blot: HeLa cell lysate stained with ARG66600 anti-STAT2 phospho (Tyr690) antibody.



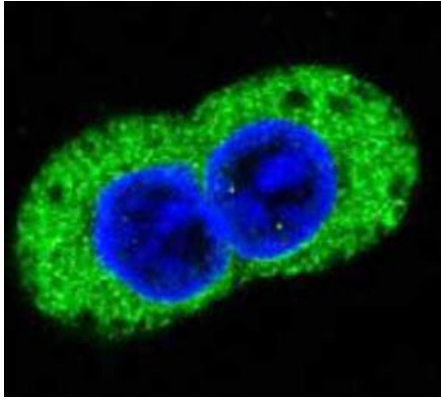
#### ARG51041 anti-STAT1 antibody WB image

Western blot: 20 µg of HeLa and Jurkat cell lysates stained with ARG51041 anti-STAT1 antibody at 1:500 dilution.



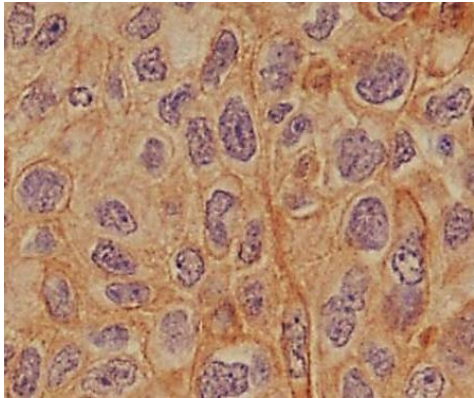
#### ARG51041 anti-STAT1 antibody IHC-P image

Immunohistochemistry: paraffin-embedded human breast carcinoma tissue stained with anti-STAT1 antibody ARG51041 (left) or the same antibody preincubated with blocking peptide (right).



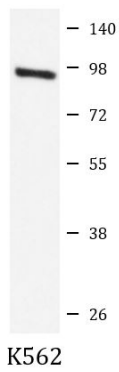
ARG57599 anti-STAT2 antibody ICC/IF image

Immunofluorescence: A431 cells stained with ARG57599 anti-STAT2 antibody.



ARG57599 anti-STAT2 antibody IHC-P image

Immunohistochemistry: Paraffin-embedded Human lung cancer tissue stained with ARG57599 anti-STAT2 antibody.



ARG57599 anti-STAT2 antibody WB image

Western blot: K562 cell lysate stained with ARG57599 anti-STAT2 antibody.