

ARG30303 Nucleolar Marker Antibody Duo

Package: 1 pair
Store at: -20°C

Component

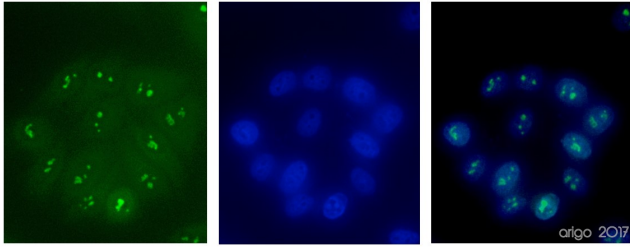
Cat. No.	Component Name	Host clonality	Reactivity	Application	Package
ARG52280	anti-Fibrillarin antibody [38F3]	Mouse mAb	Hu, Ms, Ce, Dm, Plnt, S. pombe	ICC/IF, IHC-Fr, WB	50 µl
ARG55684	anti-NPM1 / Nucleophosmin antibody	Rabbit pAb	Hu	FACS, ICC/IF, IHC-P, WB	50 µl

Summary

Product Description	<p>The nucleolus is a subnuclear structure with multiple roles involving ribosome biogenesis as well as cell proliferation, growth, survival, and stress response signaling. Three main components are found in the nucleolus: the granular component (GC), fibrillar center (FC), and dense fibrillar component (DFC). The GC contains nucleophosmin which is involved in ribosome biogenesis. The DFC contains the fibrillarin which is critical for rRNA processing. Accumulated evidences prove the link between nucleolar activity with cancer, virus replication, and stress.</p> <p>arigo's Nucleolar Marker Antibody Duo comprises GC marker nucleophosmin antibody and DFC marker fibrillarin antibody. It is an excellent solution for investigating the role of nucleolus in gene expression and stress response.</p>
Target Name	Nucleolar Marker
Alternate Names	Nucleolar Marker antibody; Fibrillarin antibody; NPM1 / Nucleophosmin antibody

Properties

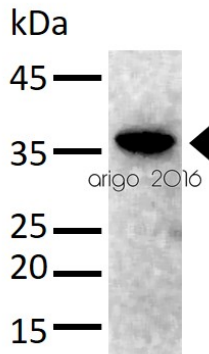
Storage instruction	For continuous use, store undiluted antibody at 2-8°C for up to a week. For long-term storage, aliquot and store at -20°C or below. Storage in frost free freezers is not recommended. Avoid repeated freeze/thaw cycles. Suggest spin the vial prior to opening. The antibody solution should be gently mixed before use.
Note	For laboratory research only, not for drug, diagnostic or other use.



ARG52280 anti-Fibrillarin antibody [38F3] ICC/IF image

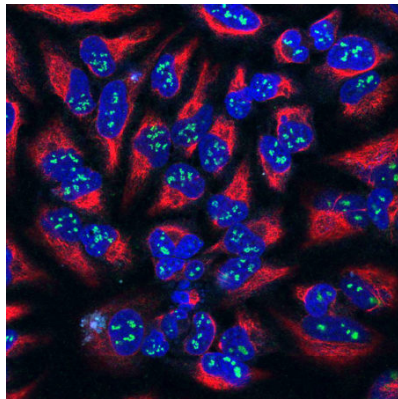
Immunofluorescence: 100% Methanol fixed (RT, 10 min) HeLa cells stained with ARG52280 anti-Fibrillarin antibody [38F3] at 1:500 dilution. Left: primary antibody (green). Middle: DAPI (blue). Right: Merge.

Secondary antibody: [ARG55393](#) Goat anti-Mouse IgG (H+L) antibody (FITC)



ARG52280 anti-Fibrillarin antibody [38F3] WB image

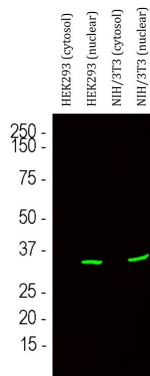
Western blot: 30 µg of HeLa cell lysate stained with ARG52280 anti-Fibrillarin antibody [38F3] at 1:1000 dilution.



ARG52280 anti-Fibrillarin antibody [38F3] ICC/IF image

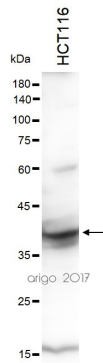
Immunofluorescence: HeLa cells stained with ARG52280 anti-Fibrillarin antibody [38F3] (green) at 1:100 dilution, and costained with [ARG52468](#) anti-Vimentin antibody (red) at 1:1000 dilution. DAPI (blue) for nuclear staining.

The Fibrillarin antibody shows strong staining of nucleoli in the nucleus, while the Vimentin antibody reveals cytoplasmic intermediate filaments.



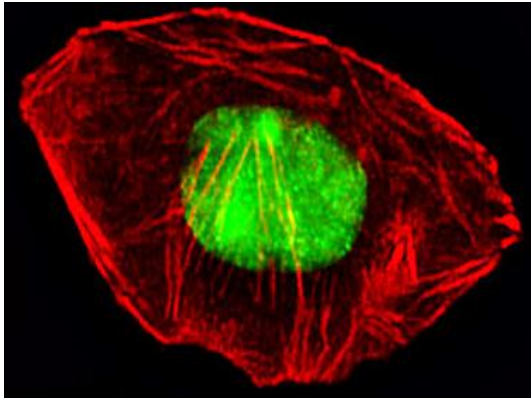
ARG52280 anti-Fibrillarin antibody [38F3] WB image

Western blot: HEK293 cytosol, HEK293 nuclear, NIH/3T3 cytosol and NIH/3T3 nuclear fractions stained with ARG52280 anti-Fibrillarin antibody [38F3] (green) at 1:500 dilution.



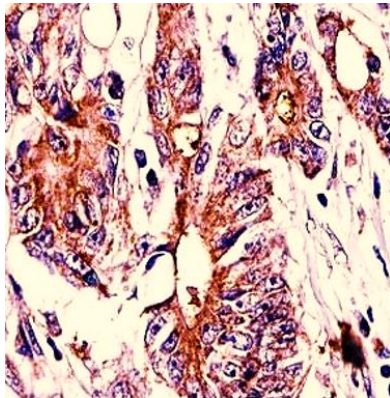
ARG55684 anti-NPM1 / Nucleophosmin antibody WB image

Western blot: 30 µg of HCT116 cell lysate stained with ARG55684 anti-NPM1 / Nucleophosmin antibody at 1:1000 dilution.



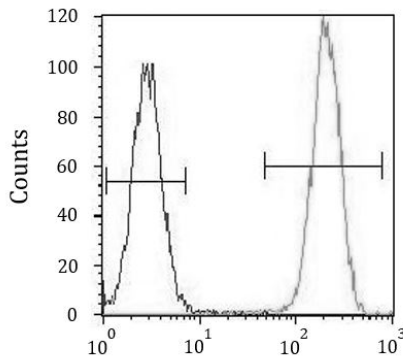
ARG55684 anti-NPM1 / Nucleophosmin antibody ICC/IF image

Immunofluorescence: A549 cells were fixed with 4% PFA (20 min), permeabilized with Triton X-100 (0.1%, 10 min), then stained with ARG55684 anti-NPM1 / Nucleophosmin antibody (green) at 1:25 dilution, 1 hour at 37°C. Cytoplasmic actin was counterstained with Alexa Fluor® 555 (red) conjugated Phalloidin (7 units/ml, 1 hour at 37°C).



ARG55684 anti-NPM1 / Nucleophosmin antibody IHC-P image

Immunohistochemistry: Formalin-fixed and paraffin-embedded Human colon carcinoma stained with ARG55684 anti-NPM1 / Nucleophosmin antibody.



ARG55684 anti-NPM1 / Nucleophosmin antibody FACS image

Flow Cytometry: HeLa cells stained with ARG55684 anti-NPM1 / Nucleophosmin antibody (right histogram) or without primary antibody as control (left histogram), followed by incubation with FITC labelled secondary antibody.