

ARG30297 Tumor Proliferation Marker Antibody Duo (Ki-67, PCNA)

Package: 1 pair
Store at: -20°C

Component

Cat. No.	Component Name	Host clonality	Reactivity	Application	Package
ARG62605	anti-PCNA antibody [PC10]	Mouse mAb	Chk, Dm, Hu, Mk, Ms, Pig, Pgn, Rat, Zfsh	FACS, ICC/IF, IHC-P, IHC-100 µl Fr, IP, WB	

Summary

Product Description Ki-67 is a nuclear protein that is preferentially expressed in all cycling cells except for resting cells in the G0-phase. PCNA is a nuclear protein that is expressed in the G1/S phase of the cell cycle. Both Ki-67 and PCNA are frequently used to assess the proliferative activity in tumor cells.

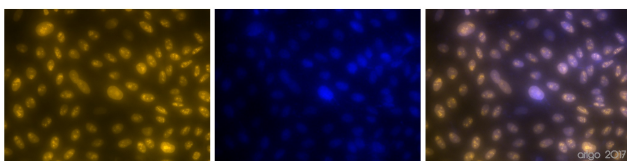
arigo's Tumor Proliferation Marker Antibody Duo offers excellent IHC-grade Ki-67 rabbit mAb and PCNA mouse mAb for detecting the proliferative activity in tumor cells.

Properties

Storage instruction For continuous use, store undiluted antibody at 2-8°C for up to a week. For long-term storage, aliquot and store at -20°C or below. Storage in frost free freezers is not recommended. Avoid repeated freeze/thaw cycles. Suggest spin the vial prior to opening. The antibody solution should be gently mixed before use.

Note For laboratory research only, not for drug, diagnostic or other use.

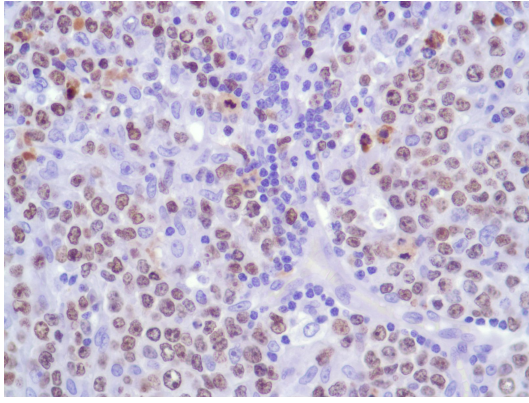
Images



ARG53222 anti-Ki-67 antibody [SP6] ICC/IF image

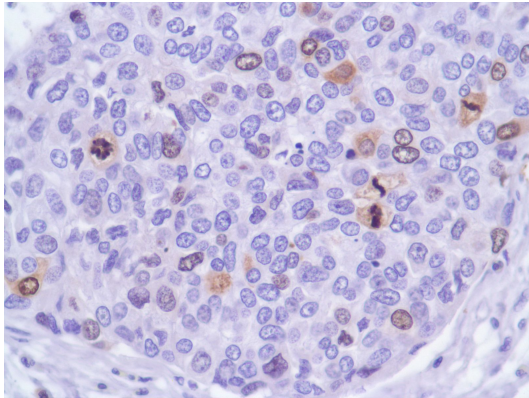
Immunofluorescence: 100% Methanol fixed (RT, 10 min) HeLa cells stained with ARG53222 anti-Ki-67 antibody [SP6] at 1:200 dilution. Left: primary antibody (orange). Middle: DAPI (blue). Right: Merge.

Secondary antibody: ARG21917 Goat anti-Rabbit IgG antibody (TRITC)



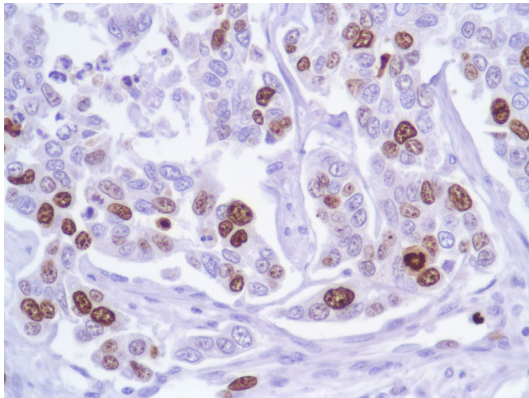
ARG53222 anti-Ki-67 antibody [SP6] IHC-P image

Immunohistochemistry: Human B Cell Lymphoma stained with Ki67 antibody [SP6] (ARG53222)



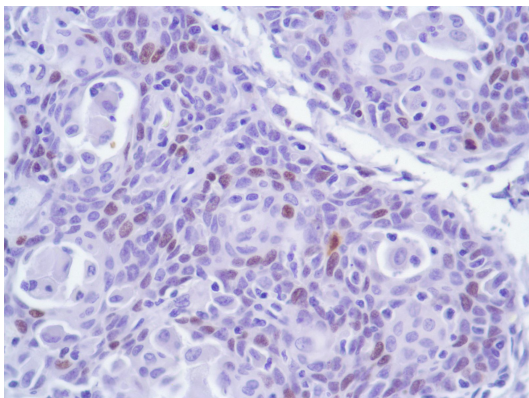
ARG53222 anti-Ki-67 antibody [SP6] IHC-P image

Immunohistochemistry: Human Bladder Transitional Cell Carcinoma stained with Ki67 antibody [SP6] (ARG53222)



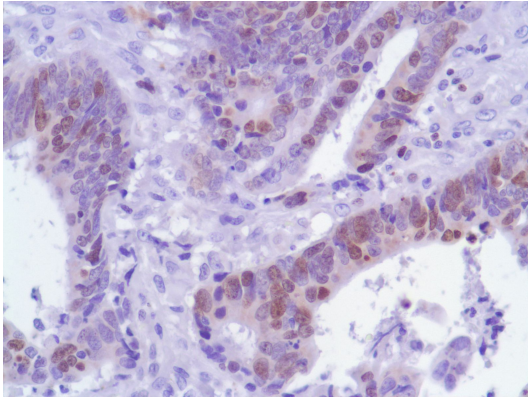
ARG53222 anti-Ki-67 antibody [SP6] IHC-P image

Immunohistochemistry: Human Breast Adenocarcinoma stained with Ki67 antibody [SP6] (ARG53222)



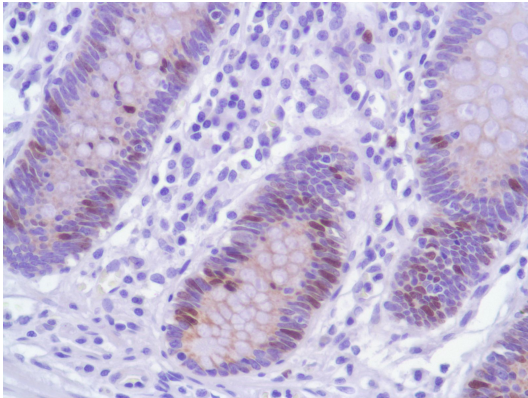
ARG53222 anti-Ki-67 antibody [SP6] IHC-P image

Immunohistochemistry: Human Cervical Squamous Cell Carcinoma stained with Ki67 antibody [SP6] (ARG53222)



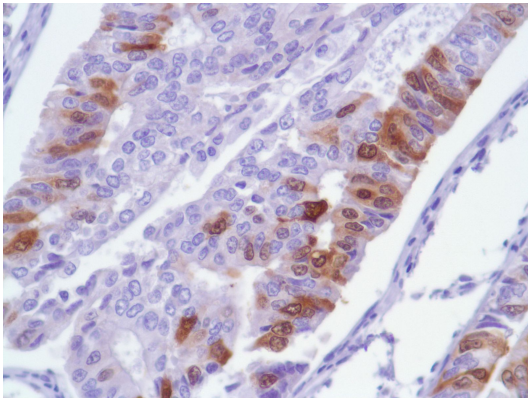
ARG53222 anti-Ki-67 antibody [SP6] IHC-P image

Immunohistochemistry: Human Colon Adenocarcinoma stained with Ki67 antibody [SP6] (ARG53222)



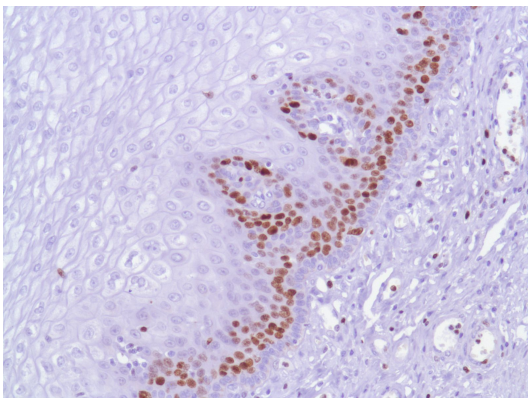
ARG53222 anti-Ki-67 antibody [SP6] IHC-P image

Immunohistochemistry: Human Colon stained with Ki67 antibody [SP6] (ARG53222)



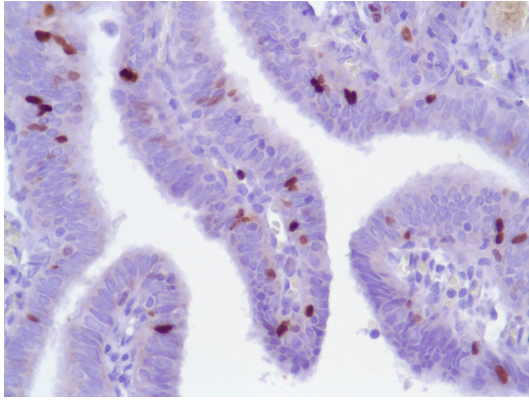
ARG53222 anti-Ki-67 antibody [SP6] IHC-P image

Immunohistochemistry: Human Endometrial Adenocarcinoma stained with Ki67 antibody [SP6] (ARG53222)



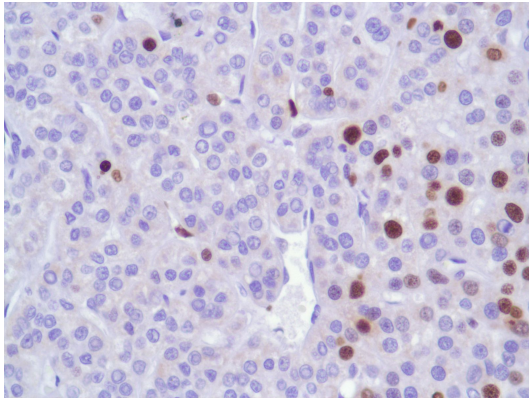
ARG53222 anti-Ki-67 antibody [SP6] IHC-P image

Immunohistochemistry: Human Esophagus stained with Ki67 antibody [SP6] (ARG53222)



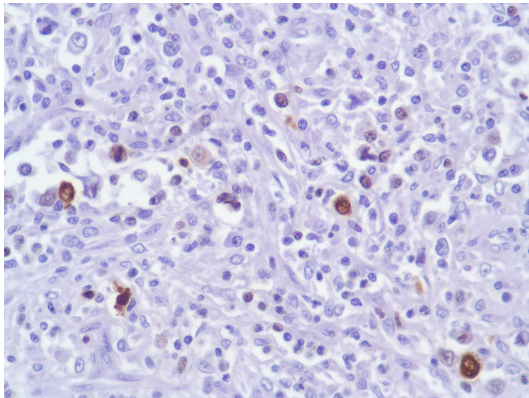
ARG53222 anti-Ki-67 antibody [SP6] IHC-P image

Immunohistochemistry: Human Fallopian Tube stained with Ki67 antibody [SP6] (ARG53222)



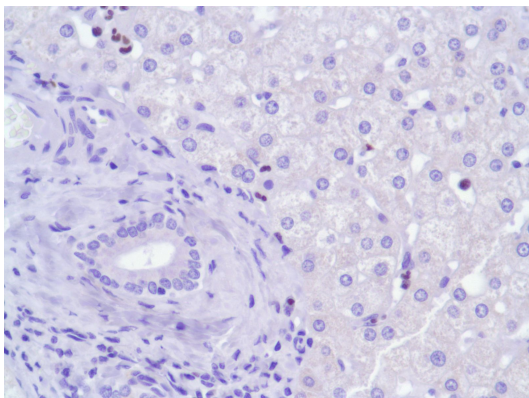
ARG53222 anti-Ki-67 antibody [SP6] IHC-P image

Immunohistochemistry: Human Hepatocellular Carcinoma stained with Ki67 antibody [SP6] (ARG53222)



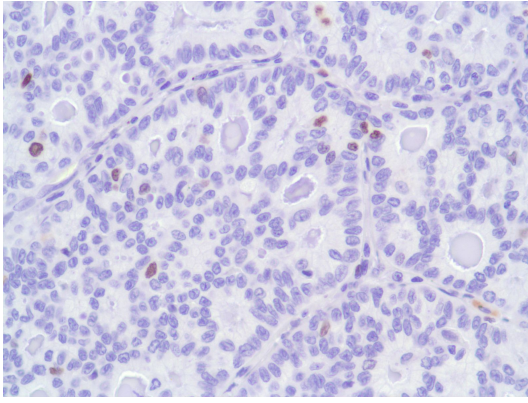
ARG53222 anti-Ki-67 antibody [SP6] IHC-P image

Immunohistochemistry: Human HK Lymphoma stained with Ki67 antibody [SP6] (ARG53222)



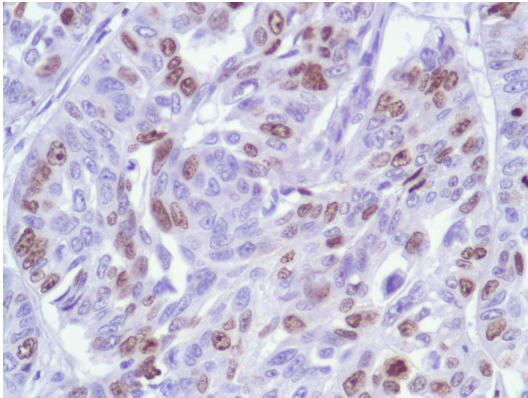
ARG53222 anti-Ki-67 antibody [SP6] IHC-P image

Immunohistochemistry: Human Liver stained with Ki67 antibody [SP6] (ARG53222)



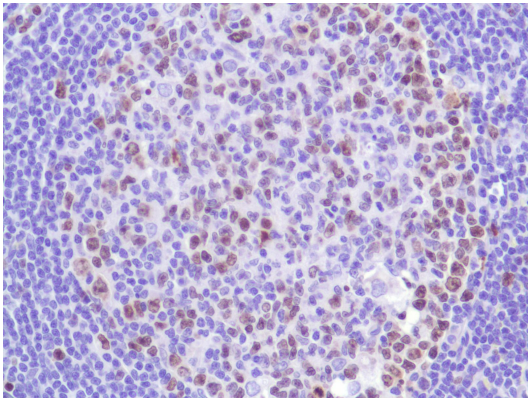
ARG53222 anti-Ki-67 antibody [SP6] IHC-P image

Immunohistochemistry: Human Lung Adenocarcinoma stained with Ki67 antibody [SP6] (ARG53222)



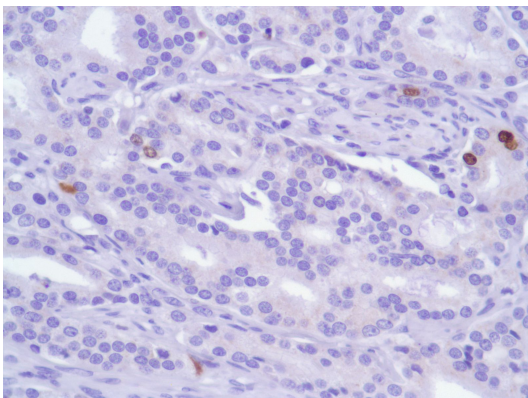
ARG53222 anti-Ki-67 antibody [SP6] IHC-P image

Immunohistochemistry: Human Lung Squamous Cell Carcinoma stained with Ki67 antibody [SP6] (ARG53222)



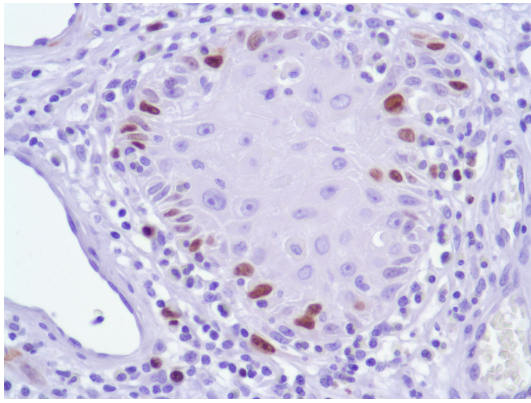
ARG53222 anti-Ki-67 antibody [SP6] IHC-P image

Immunohistochemistry: Human Lymph Node stained with Ki67 antibody [SP6] (ARG53222)



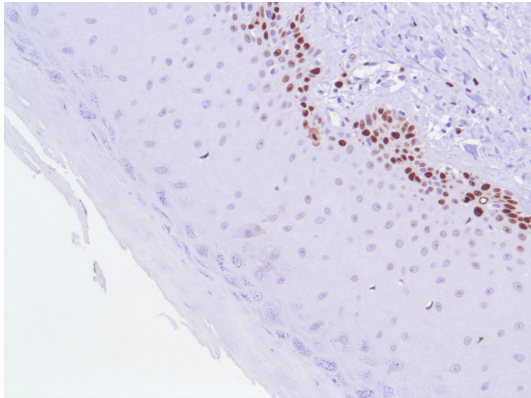
ARG53222 anti-Ki-67 antibody [SP6] IHC-P image

Immunohistochemistry: Human Prostate Adenocarcinoma stained with Ki67 antibody [SP6] (ARG53222)



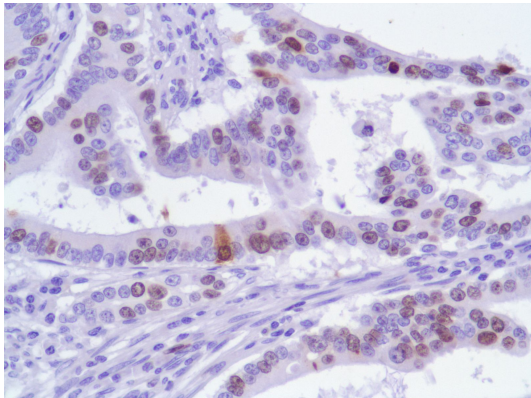
ARG53222 anti-Ki-67 antibody [SP6] IHC-P image

Immunohistochemistry: Human Skin Squamous Cell Carcinoma stained with Ki67 antibody [SP6] (ARG53222)



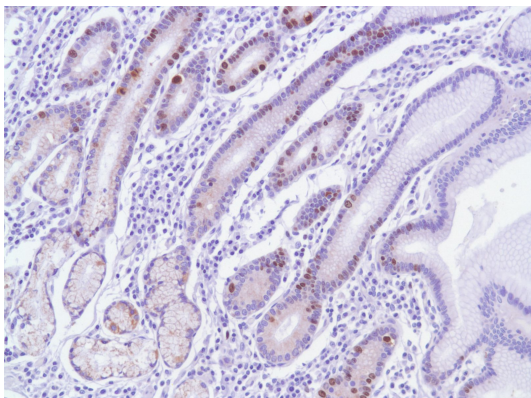
ARG53222 anti-Ki-67 antibody [SP6] IHC-P image

Immunohistochemistry: Human Skin stained with Ki67 antibody [SP6] (ARG53222)



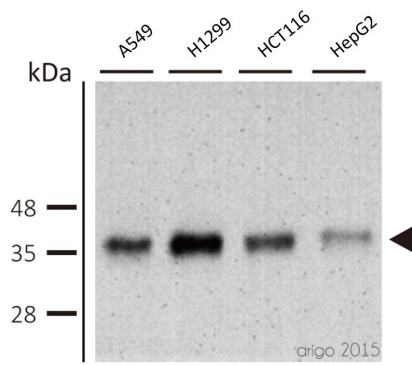
ARG53222 anti-Ki-67 antibody [SP6] IHC-P image

Immunohistochemistry: Human Stomach Adenocarcinoma stained with Ki67 antibody [SP6] (ARG53222)



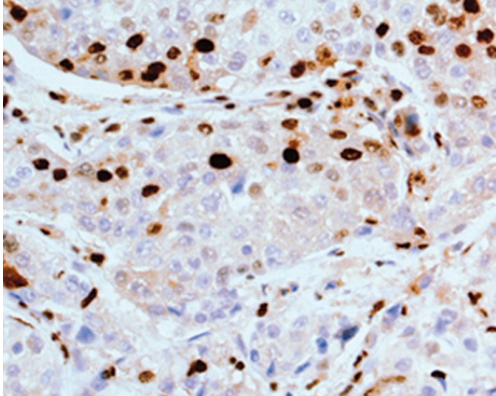
ARG53222 anti-Ki-67 antibody [SP6] IHC-P image

Immunohistochemistry: Human Stomach stained with Ki67 antibody [SP6] (ARG53222)



ARG62605 anti-PCNA antibody [PC10] WB image

Western blot: A549, H1299, HCT116 and HepG2 cell lysates stained with ARG62605 anti-PCNA antibody [PC10] at 0.2 $\mu\text{g/ml}$.



ARG62605 anti-PCNA antibody [PC10] IHC-P image

Immunohistochemistry: formalin-fixed, paraffin-embedded human breast carcinoma tissue stained with PCNA antibody [PC10] (ARG62605).