

ARG30220 Phospho Raf1 Antibody Duo (Total, pS259)

Package: 1 pair
Store at: -20°C

Component

Cat. No.	Component Name	Host clonality	Reactivity	Application	Package
ARG51510	anti-Raf1 phospho (Ser259) antibody	Rabbit pAb	Hu, Ms, Rat	IHC-P, WB	50 µl
ARG10060	anti-Raf1 antibody [410]	Mouse mAb	Hu	WB	50 µg

Summary

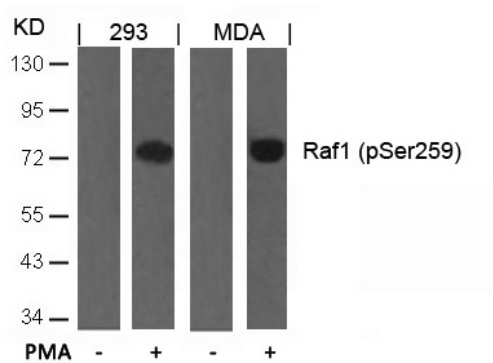
Product Description	c-RAF, or RAF1 is a Serine/threonine-protein kinase that acts as a regulatory link between the membrane-associated Ras GTPases and the MAPK/ERK cascade, and this critical regulatory link functions as a switch determining cell fate decisions including proliferation, differentiation, apoptosis, survival and oncogenic transformation. RAF1 can be deactivated through the phosphorylation by cyclic AMP-dependent protein Kinase (PKA) at various residues. Serine 43 phosphorylation decreased the binding to Ras in serum-starved cells. Mutation of Ser259 and Ser338 increased the basal Raf-1 activity. Dhillon et al. 2002. Mol Cell Biol 22(10):3237-46 Kubicek et al. 2002. J Biol Chem 277(10): 7913
Target Name	Raf1
Alternate Names	Phospho Raf1 antibody; Raf1 antibody; Raf1 phospho (Ser259) antibody

Properties

Storage instruction	For continuous use, store undiluted antibody at 2-8°C for up to a week. For long-term storage, aliquot and store at -20°C or below. Storage in frost free freezers is not recommended. Avoid repeated freeze/thaw cycles. Suggest spin the vial prior to opening. The antibody solution should be gently mixed before use.
Note	For laboratory research only, not for drug, diagnostic or other use.

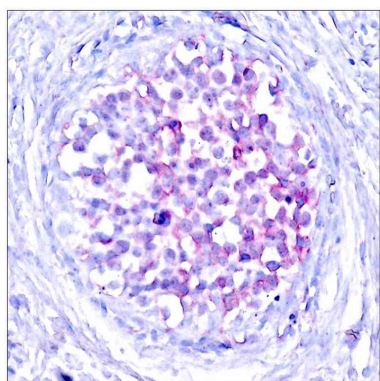
Bioinformation

Gene Full Name	Phospho Raf1 Antibody Duo (Total, pS259)
Research Area	Cancer antibody; Cell Biology and Cellular Response antibody; Cell Death antibody; Metabolism antibody; Signaling Transduction antibody



ARG51510 anti-Raf1 phospho (Ser259) antibody WB image

Western Blot: extracts from 293 and MDA cells untreated or treated with PMA stained with anti-Raf1 (phospho Ser259) antibody ARG51510.



ARG51510 anti-Raf1 phospho (Ser259) antibody IHC-P image

Immunohistochemistry: paraffin-embedded human breast carcinoma tissue stained with anti-Raf1 (phospho Ser259) antibody ARG51510.