

## ARG30213 Phospho p53 Antibody Duo (Total, pS15)

Package: 1 pair  
Store at: -20°C

### Component

Cat. No.	Component Name	Host clonality	Reactivity	Application	Package
ARG20150	anti-p53 phospho (Ser15) antibody	Rabbit pAb	Hu, Ms, Rat	IHC, IP, WB	25 µg
ARG51081	anti-p53 antibody	Rabbit pAb	Hu	ICC/IF, IHC-P, WB	50 µl

### Summary

**Product Description** P53, also known as tumor antigen p53, acts as a tumor suppressor in many tumor types to induce growth arrest or apoptosis depending on the physiological circumstances and cell type. Involved in cell cycle regulation as a trans-activator that acts to negatively regulate cell division by controlling a set of genes required for this process. One of the activated genes is an inhibitor of cyclin-dependent kinases. Upon gamma-irradiation and DNA damage, p53 is phosphorylated at Ser15 residue and this increases its ability to recruit CBP/p300 which in turns increase the overall acetylation of C-terminus of p53 protein. Acetylation of C-terminal domain can dramatically increase site-specific DNA binding ability of p53 protein on both short oligonucleotides and long DNA fragments. Zhao et al. 2008. Cell cycle 7(19): 3048-55 Lambert et al. 1998. J Biol Chem 273(49): 33048 Luo et al. 2004. PNAS 101(8): 2259

Related news:

[Immune signaling protein TLR4 has opposing roles in breast cancer development](#)  
[Therapeutic strategies against PDAC](#)

**Target Name**

p53

**Alternate Names**

Phospho p53 antibody; Phospho tumor protein p53 antibody; p53 phospho (Ser15) antibody; p53 antibody

### Properties

**Storage instruction** For continuous use, store undiluted antibody at 2-8°C for up to a week. For long-term storage, aliquot and store at -20°C or below. Storage in frost free freezers is not recommended. Avoid repeated freeze/thaw cycles. Suggest spin the vial prior to opening. The antibody solution should be gently mixed before use.

**Note**

For laboratory research only, not for drug, diagnostic or other use.

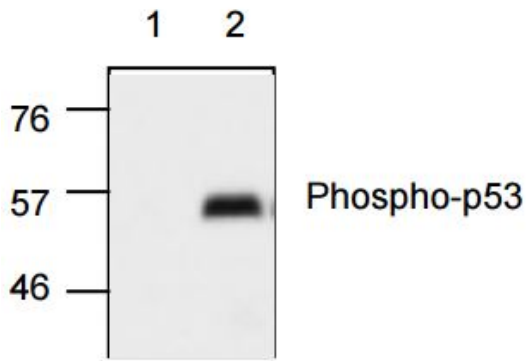
### Bioinformation

**Gene Full Name**

Phospho tumor protein p53 Antibody Duo (Total, pS15)

**Research Area**

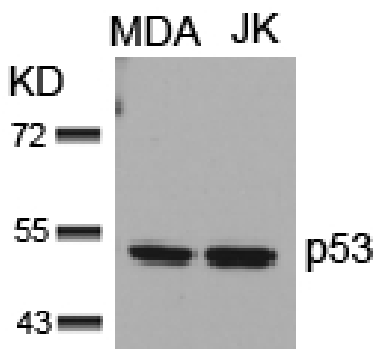
Cancer antibody; Cell Biology and Cellular Response antibody; Cell Death antibody; Gene Regulation antibody



ARG20150 anti-P53 phospho (Ser15) antibody WB image

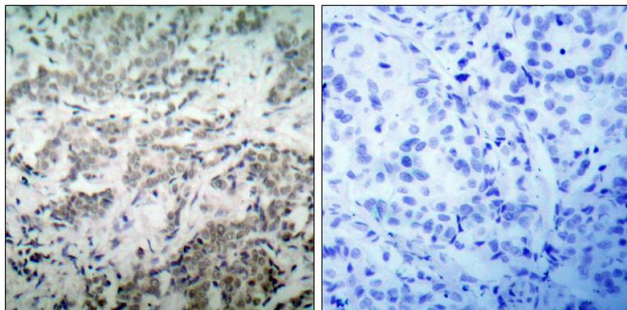
Western Blot: 1. Untreated HeLa cell 2. UV-treated HeLa cell stained with anti-p53 (phospho Ser15) antibody (ARG20150).

The antibody detects ~53 kDa Ser15 phosphorylated p53. It does not react with non-phosphorylated p53 or p53 phosphorylated at other sites.



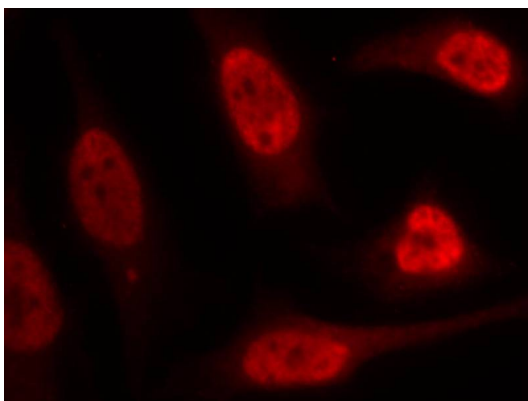
ARG51081 anti-p53 antibody WB image

Western Blot: extracts from MDA and JK cells stained with anti-p53 antibody ARG51081.



ARG51081 anti-p53 antibody IHC-P image

Immunohistochemistry: paraffin-embedded human breast carcinoma tissue stained with anti-p53 antibody ARG51081 (left) or the same antibody preincubated with blocking peptide (right).



ARG51081 anti-p53 antibody ICC/IF image

Immunofluorescence: methanol-fixed HeLa cells stained with anti-p53 antibody ARG51081.