

ARG30211 Phospho Tau Antibody Panel (Total, pS396, pS404)

Package: 1 kit
Store at: -20°C

Component

| Cat. No. | Component Name | Host clonality | Reactivity | Application | Package |
|----------|-------------------------------------|----------------|-------------|-------------------|---------|
| ARG51614 | anti-Tau phospho (Ser404) antibody | Rabbit pAb | Hu, Ms, Rat | ICC/IF, IHC-P, WB | 50 µl |
| ARG51604 | anti-Tau phospho (Ser396) antibody | Rabbit pAb | Hu, Ms, Rat | IHC-P, WB | 50 µl |
| ARG51094 | anti-Tau antibody | Rabbit pAb | Hu, Ms, Rat | IHC-P, WB | 50 µl |
| ARG65351 | Goat anti-Rabbit IgG antibody (HRP) | Goat pAb | Rb | ELISA, IHC-P, WB | 50 µl |

Summary

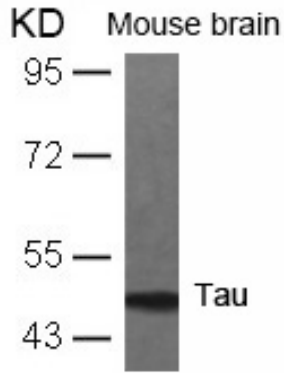
| | |
|---------------------|---|
| Product Description | Tau is a group of neuronal microtubule-associated proteins that are formed by alternative mRNA splicing and accumulate in neurofibrillary tangles in Alzheimer's disease (AD) brain. Tau plays a key role in regulating microtubule dynamics, axonal transport and neurite outgrowth, and all these functions of tau are modulated by site-specific phosphorylation. Phosphorylation of Tau (Isoform Tau-F) at Ser296 and Ser404 sites by Tau Protein Kinase II is responsible for the functional loss of tau-mediated tubulin polymerization in AD. Evans et al. 2000. J Biol Chem 275(32): 24977-83 Stoothoff and Johnson. 2005. Biochem Biophys Acta 1739(2-3): 280-97 |
| Target Name | Tau |
| Alternate Names | Phospho Tau antibody; Tau antibody; Tau phospho (Ser396) antibody; Tau phospho (Ser404) antibody |

Properties

| | |
|---------------------|--|
| Storage instruction | For continuous use, store undiluted antibody at 2-8°C for up to a week. For long-term storage, aliquot and store at -20°C or below. Storage in frost free freezers is not recommended. Avoid repeated freeze/thaw cycles. Suggest spin the vial prior to opening. The antibody solution should be gently mixed before use. |
| Note | For laboratory research only, not for drug, diagnostic or other use. |

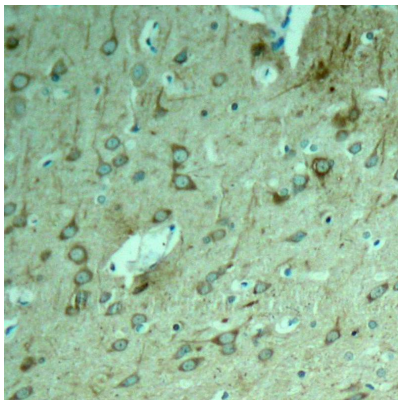
Bioinformation

| | |
|----------------|--|
| Gene Full Name | Antibody Panel for Phospho Tau (Total, pS396, pS404) |
| Research Area | Immune System antibody; Neuroscience antibody; Signaling Transduction antibody |



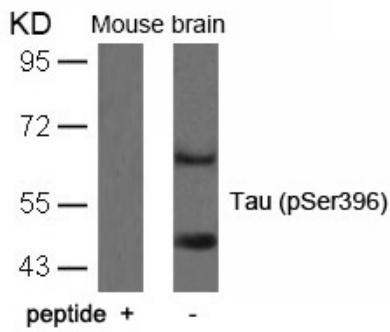
ARG51094 anti-Tau antibody WB image

Western Blot: extracts from mouse brain tissue stained with anti-Tau antibody ARG51094.



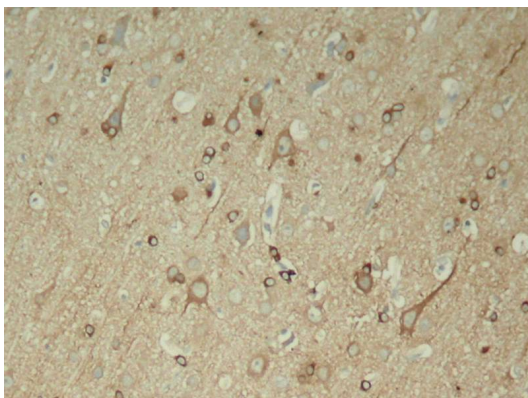
ARG51094 anti-Tau antibody IHC-P image

Immunohistochemistry: paraffin-embedded rat hippocampal region tissue from a model with Alzheimer stained with anti-Tau antibody ARG51094



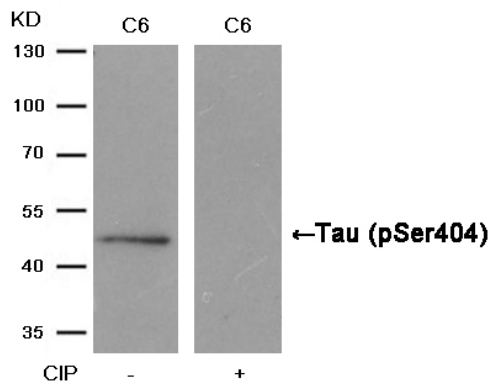
ARG51604 anti-Tau phospho (Ser396) Antibody WB image

Western Blot: extracts from mouse brain tissue stained with anti-Hsp90 antibody [D7 alpha] ARG51604 and the same antibody preincubated with blocking peptide.



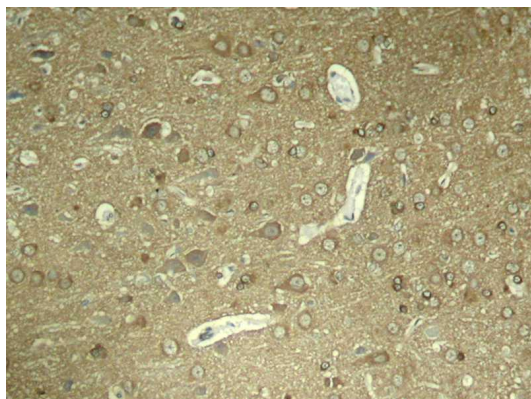
ARG51604 anti-Tau phospho (Ser396) Antibody IHC-P image

Immunohistochemistry: paraffin-embedded rat hippocampal region tissue from a model with Alzheimer stained with anti-Hsp90 antibody [D7 alpha] ARG51604



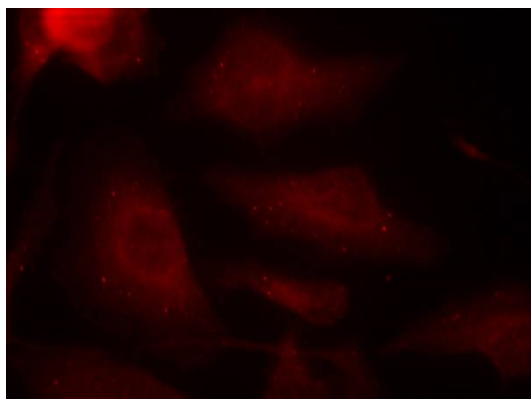
ARG51614 anti-Tau phospho (Ser404) antibody WB image

Western Blot: extracts from C6 cells, treated with calf intestinal phosphatase (CIP), stained with anti-Tau (phospho Ser404) antibody ARG51614.



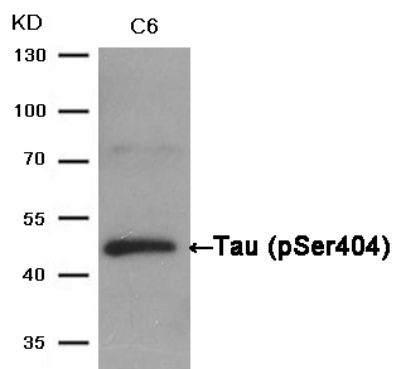
ARG51614 anti-Tau phospho (Ser404) antibody IHC-P image

Immunohistochemistry: paraffin-embedded rat hippocampal region tissue from a model with Alzheimer stained with anti-Tau (phospho Ser404) antibody ARG51614



ARG51614 anti-Tau phospho (Ser404) antibody ICC/IF image

Immunofluorescence: methanol-fixed HeLa cells stained with anti-Tau (phospho Ser404) antibody ARG51614.

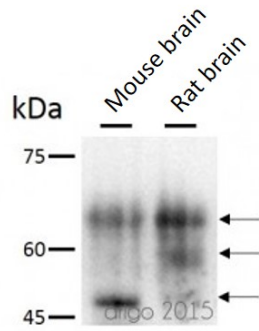


ARG51614 anti-Tau phospho (Ser404) antibody WB image

Western Blot: extracts from C6 cells stained with anti-Tau (phospho Ser404) antibody ARG51614.

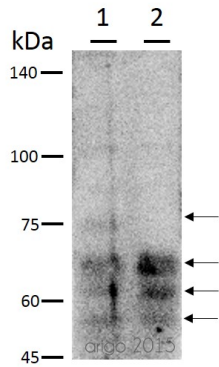
ARG51614 anti-Tau phospho (Ser404) antibody WB image

Western blot: 30 µg of Mouse brain and Rat brain tissue lysates stained with ARG51614 anti-Tau phospho (Ser404) antibody at 1:500 dilution.



ARG51604 anti-Tau phospho (Ser396) antibody WB image

Western blot: 30 µg of 1) Mouse brain and 2) Rat brain tissue lysate stained with ARG51604 anti-Tau phospho (Ser396) antibody at 1:500 dilution.



ARG51094 anti-Tau antibody WB image

Western blot: 30 µg of 1) Mouse brain and 2) Rat brain tissue lysate stained with ARG51094 anti-Tau antibody at 1:500 dilution.

