

ARG30207 Phospho JunB Antibody Duo (Total, pSer259)

Package: 1 pair
Store at: -20°C

Component

Cat. No.	Component Name	Host clonality	Reactivity	Application	Package
ARG64936	anti-JunB antibody	Goat pAb	Hu	WB	50 µg
ARG51531	anti-JunB phospho (Ser259) antibody	Rabbit pAb	Hu, Ms, Rat	IHC-P, WB	50 µl

Summary

Product Description JunB is a basic region, leucine zipper (bZIP) transcription factor belonging to the Jun family that includes c-Jun and JunD. Jun family members homodimerize or heterodimerize with Fos and ATF proteins to form a functional transcription factor AP-1 (activator protein 1), whose activity is regulated by a variety of physiological and pathological stimuli such as growth factors, infections, and stress signals. Phosphorylation of this residue enhances DNA binding of the JunB/AP-1 complex.

Busch, S.J. and Sassone-Corsi, P. (1990) Trends Genet. 6, 36-40.
Hess, J. et al. (2004) J. Cell Sci. 117, 5965-5973.
Mechta-Grigoriou, F. et al. (2001) Oncogene 20, 2378-2389.
Chiu, R. et al. (1989) Cell 59, 979-986.

Related news:

[JunB as a novel gate keeper for prostate cancer progression](#)

Target Name

JunB

Alternate Names

Phospho JunB antibody; JunB phospho (Ser259) antibody; JunB antibody

Properties

Storage instruction For continuous use, store undiluted antibody at 2-8°C for up to a week. For long-term storage, aliquot and store at -20°C or below. Storage in frost free freezers is not recommended. Avoid repeated freeze/thaw cycles. Suggest spin the vial prior to opening. The antibody solution should be gently mixed before use.

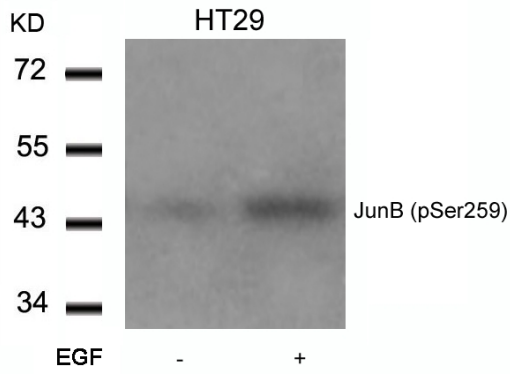
Note

For laboratory research only, not for drug, diagnostic or other use.

Bioinformation

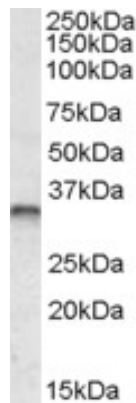
Gene Full Name Antibody Duo for Phospho JunB (Total, pSer259)

Research Area Gene Regulation antibody



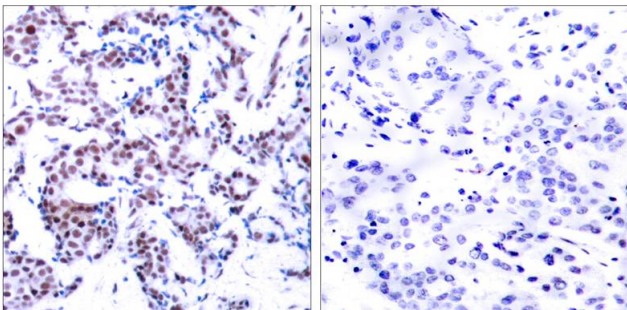
ARG51531 anti-JunB phospho (Ser259) antibody WB image

Western Blot: extracts from HT29 cells untreated or treated with EGF stained with anti-JunB (phospho Ser259) antibody ARG51531.



ARG64936 anti-JUNB antibody WB image

Western Blot: Human Breast Cancer lysate (35 µg protein in RIPA buffer) stained with ARG64936 anti-JunB antibody at 0.3 µg/ml dilution.



ARG51531 anti-JunB phospho (Ser259) antibody IHC-P image

Immunohistochemistry: paraffin-embedded human breast carcinoma tissue stained with anti-JunB (phospho Ser259) antibody ARG51531 (left) or the same antibody preincubated with blocking peptide (right).