

ARG30171 Phospho FOXO1 / FKHR Antibody Duo (Total, pS256)

Package: 1 pair

Store at: -20°C

Component

Cat. No.	Component Name	Host clonality	Reactivity	Application	Package
ARG51617	anti-FOXO1 / FKHR phospho (Ser256) antibody	Rabbit pAb	Hu, Ms, Rat	ICC/IF, IHC-P, WB	50 µl
ARG54056	anti-FOXO1 / FKHR antibody	Mouse mAb	Hu	WB	50 µl

Summary

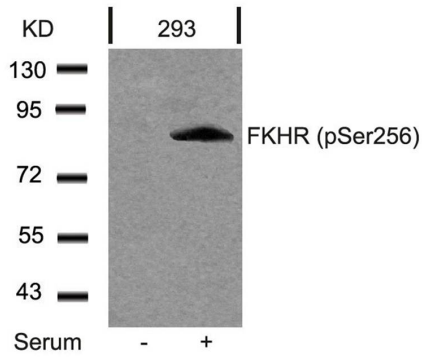
Product Description	<p>FKHR (FOXO1) is a transcription factor which acts as a regulator of cell responses to oxidative stress and are important target for Insulin and growth factor signaling. Phosphorylation of FKHR (FOXO1) at Serine 256 site has been shown to suppress the transactivation function of this protein and thus inhibiting its function.</p> <p>Zhang et al. (2002) JBC 277:45276-45284 Machida S et al. (2003) J Cell Physiol 196(3): 523-31</p>
Target Name	FOXO1 / FKHR
Alternate Names	Phospho FOXO1 / FKHR antibody; Phospho Forkhead box O1 antibody; Phospho FOXO1 antibody; FOXO1 / FKHR phospho (Ser256) antibody; FOXO1 / FKHR antibody

Properties

Storage instruction	For continuous use, store undiluted antibody at 2-8°C for up to a week. For long-term storage, aliquot and store at -184°C or below. Storage in frost free freezers is not recommended. Avoid repeated freeze/thaw cycles. Suggest spin the vial prior to opening. The antibody solution should be gently mixed before use.
Note	For laboratory research only, not for drug, diagnostic or other use.

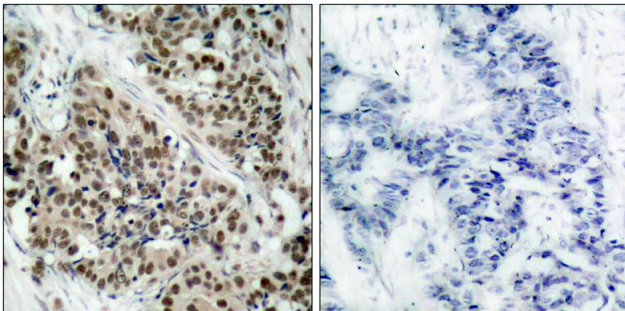
Bioinformation

Gene Full Name	Phospho Forkhead box O1 (FOXO1) Antibody Duo (Total, pS256)
Research Area	Cancer antibody; Gene Regulation antibody; Metabolism antibody; Neuroscience antibody; Signaling Transduction antibody



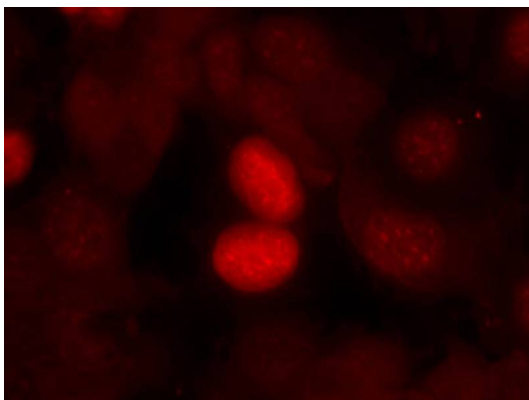
ARG51617 anti-FKHR phospho (Ser256) antibody WB image

Western Blot: extracts from 293 cells untreated or treated with serum stained with anti-FKHR (phospho Ser256) antibody ARG51617.



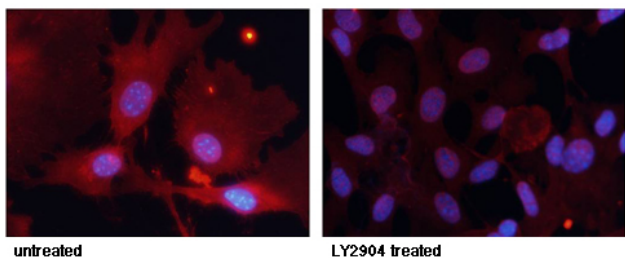
ARG51617 anti-FKHR phospho (Ser256) antibody IHC-P image

Immunohistochemistry: paraffin-embedded human breast carcinoma tissue stained with anti-FKHR (phospho Ser256) antibody ARG51617 (left) or the same antibody preincubated with blocking peptide (right).



ARG51617 anti-FKHR phospho (Ser256) antibody ICC/IF image

Immunofluorescence: methanol-fixed MCF7 cells stained with anti-FKHR (phospho Ser256) antibody ARG51617.

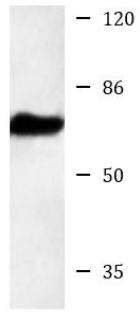


ARG51617 anti-FKHR phospho (Ser256) antibody ICC/IF image

Immunofluorescence: methanol-fixed MEF cells untreated or treated with LY2904 stained with anti-FKHR (phospho Ser256) antibody ARG51617.

ARG54056 anti-FOXO1 / FKHR antibody WB image

Western blot: A431 cell lysate stained with ARG54056 anti-FOXO1 / FKHR antibody at 1:1000 dilution.



A431
