

ARG30119 Pro-B Cell Marker Antibody panel (CD19, CD34, CD38, CD40, CD45)(FACS)

Package: 1 kit
Store at: -20°C, 4°C

Component

Cat. No.	Component Name	Host clonality	Reactivity	Application	Package
ARG52708					
	ARG62820	anti-CD34 antibody [4H11(APG)]	Mouse mAb	Hu	FACS, ICC/IF, IHC-P, WB 50 µg
	ARG62839	anti-CD40 antibody [HI40a] (FITC)	Mouse mAb	Hu	FACS 50 tests
	ARG62856	anti-CD45 antibody [MEM-28]	Mouse mAb	Hu	FACS, ICC/IF, IHC-P, IP, 50 µg WB
	ARG65350	Goat anti-Mouse IgG antibody (HRP)	Goat pAb	Ms	ELISA, IHC-P, WB 50 µl
	ARG65351	Goat anti-Rabbit IgG antibody (HRP)	Goat pAb	Rb	ELISA, IHC-P, WB 50 µl

Summary

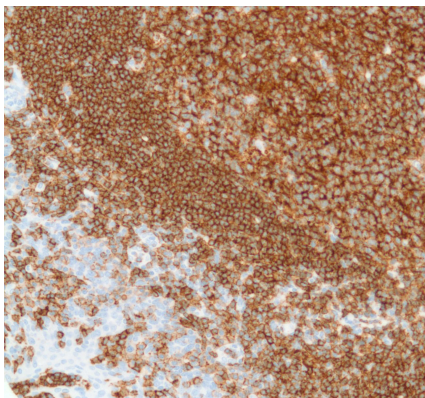
Product Description	<p>B cell development occurs in the bone marrow and peripheral lymphoid tissues such as spleen. In the bone marrow, pro B Cell, pre B Cell and Immature B Cell develop. During this differentiation, several stages of rearrangement occur at immunoglobulin locus, resulting in the generation and surface expression of different types of receptors, such as pre-B-cell receptor. Different markers are also expressed at the surface of these cells throughout the development of B cell.</p> <p>Pro B Cells express CD19, CD34, CD38, CD40 and B220 on the surface of the cells.</p> <p>Arigo has these marker antibodies in the application of Flow Cytometry for the convenience of identifying Pro-B Cells in B cell populations.</p> <p>Cambier et al. Nature Rev Immunology 7: 633-643 (2007) Alberts et al. Molecular Biology of the Cell: 1367 Parham. The Immune System</p>
----------------------------	--

Properties

Storage instruction	Store antibodies at 4°C or -20°C. Please refer to the each product datasheet for detail temperatures of the antibodies.
Note	For laboratory research only, not for drug, diagnostic or other use.

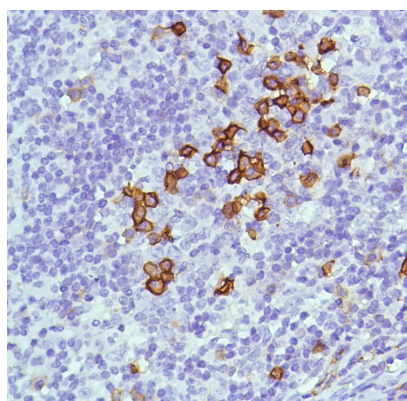
Bioinformation

Research Area	Cancer antibody; Cell Biology and Cellular Response antibody; Controls and Markers antibody; Developmental Biology antibody; Immune System antibody; Metabolism antibody; Neuroscience antibody; Signaling Transduction antibody
----------------------	--



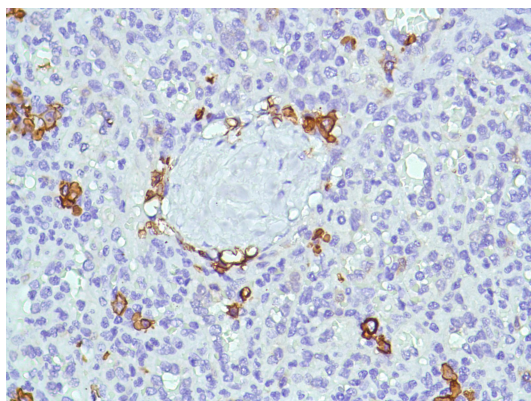
ARG52708 anti-CD19 antibody [SP110] IHC-P image

Immunohistochemistry: Human Tonsil stained with CD19 antibody [SP110] (ARG52708)



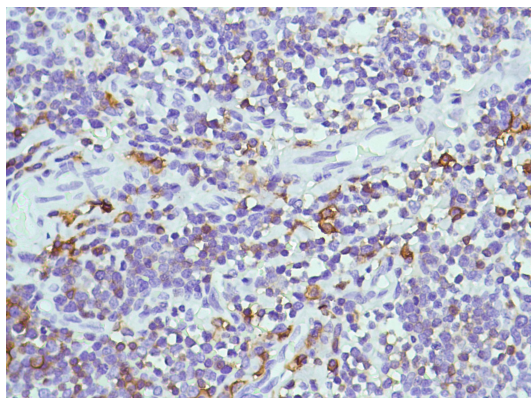
ARG52764 anti-CD38 antibody [SP149] IHC-P image

Immunohistochemistry: Human Tonsil stained with CD38 antibody [SP149] (ARG52764)



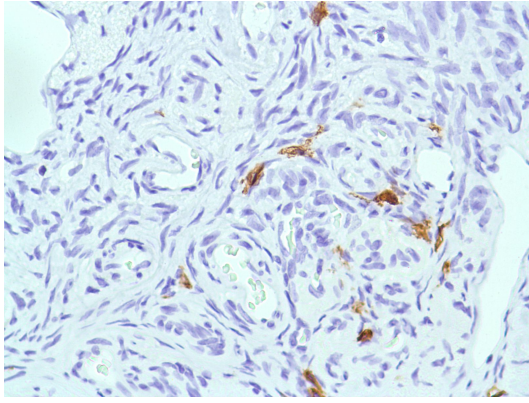
ARG52764 anti-CD38 antibody [SP149] IHC-P image

Immunohistochemistry: Human Spleen stained with CD38 antibody [SP149] (ARG52764)



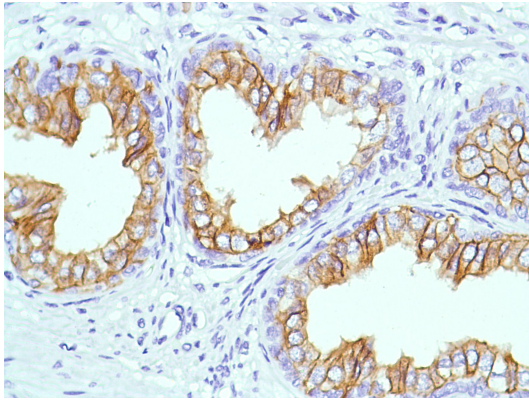
ARG52764 anti-CD38 antibody [SP149] IHC-P image

Immunohistochemistry: Human Thymus stained with CD38 antibody [SP149] (ARG52764)



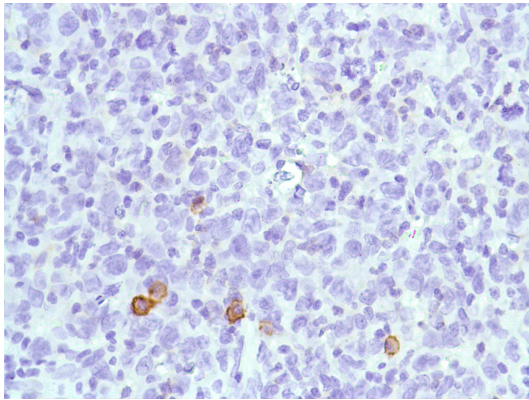
ARG52764 anti-CD38 antibody [SP149] IHC-P image

Immunohistochemistry: Human Ovary stained with CD38 antibody [SP149] (ARG52764)



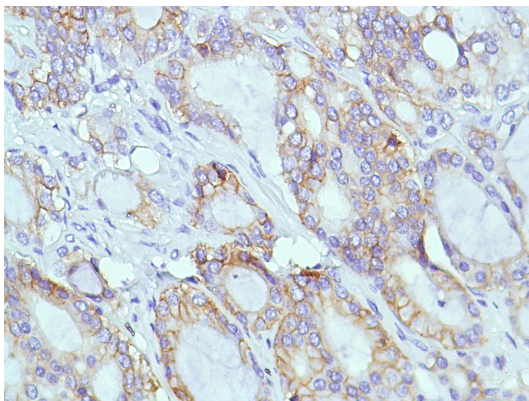
ARG52764 anti-CD38 antibody [SP149] IHC-P image

Immunohistochemistry: Human Prostate stained with CD38 antibody [SP149] (ARG52764)



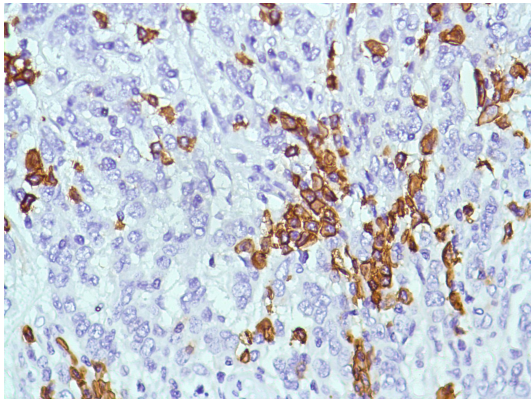
ARG52764 anti-CD38 antibody [SP149] IHC-P image

Immunohistochemistry: Human B Cell Lymphoma stained with CD38 antibody [SP149] (ARG52764)



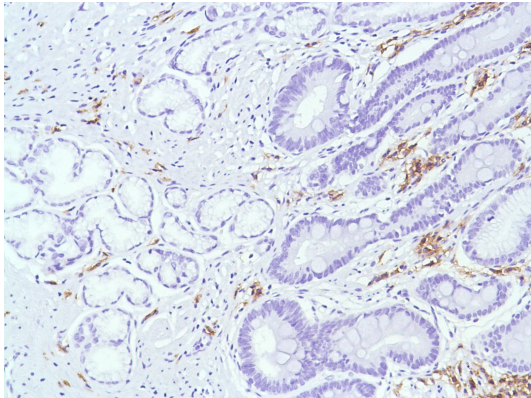
ARG52764 anti-CD38 antibody [SP149] IHC-P image

Immunohistochemistry: Human Prostate Adenocarcinoma stained with CD38 antibody [SP149] (ARG52764)



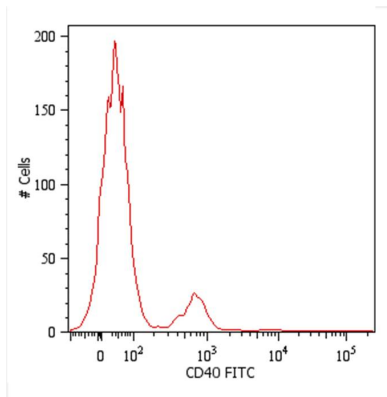
ARG52764 anti-CD38 antibody [SP149] IHC-P image

Immunohistochemistry: Human Stomach Adenocarcinoma stained with CD38 antibody [SP149] (ARG52764)



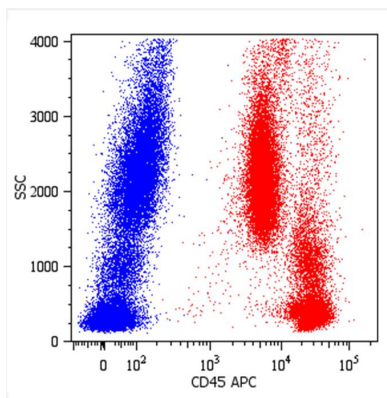
ARG52764 anti-CD38 antibody [SP149] IHC-P image

Immunohistochemistry: Human Stomach stained with CD38 antibody [SP149] (ARG52764)



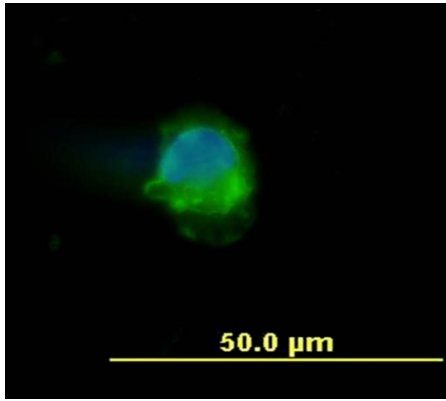
Monoclonal antibody clone HI40a Flow Cytometry analysis image

Flow Cytometry: Human peripheral blood cells stained with antibody clone HI40a.
Cells in the lymphocyte gate were used for analysis.



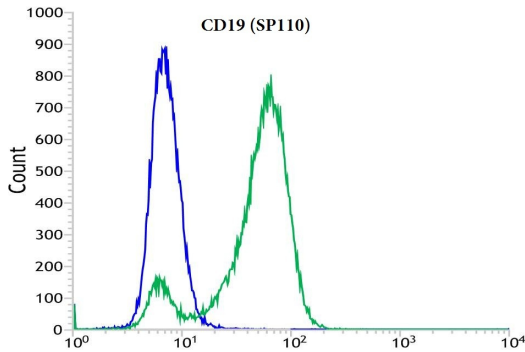
Monoclonal antibody clone MEM-28 Flow Cytometry analysis image

Flow Cytometry: Human peripheral blood cells stained with antibody clone MEM-28.



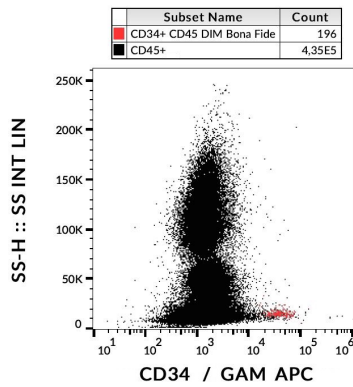
Monoclonal antibody clone MEM-28 ICC/IF image

Immunofluorescence: Human peripheral blood mononuclear cell stained with clone MEM-28 (green)
Cell nuclei was stained with DAPI (blue).



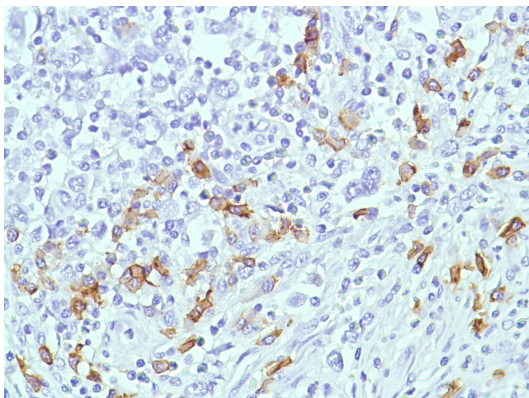
ARG52708 anti-CD19 antibody [SP110] Flow Cytometry image

Flow Cytometry: RAMOS cells stained with ARG52708 anti-CD19 antibody [SP110] (green) or control rabbit IgG (blue).



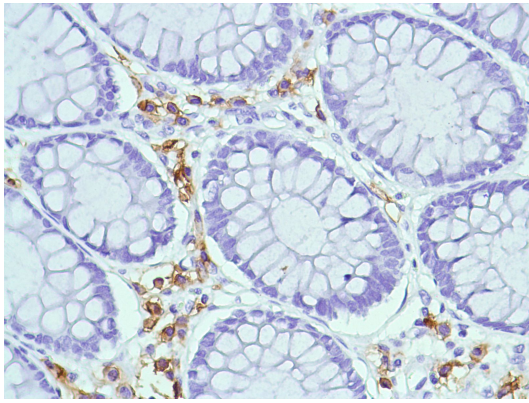
ARG62820 anti-CD34 antibody [4H11(APG)] FACS image

Flow Cytometry: Human peripheral blood stained with ARG62820 anti-CD34 antibody [4H11(APG)], followed by incubation with APC labelled Goat anti-Mouse secondary antibody. CD34+ cells (red); CD45+ cells (black).



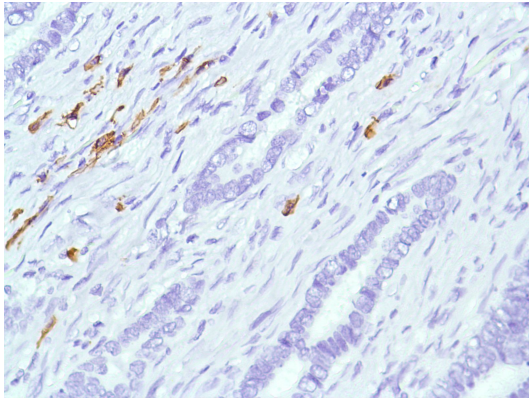
ARG52764 anti-CD38 antibody [SP149] IHC-P image

Immunohistochemistry: Human HK Lymphoma stained with CD38 antibody [SP149] (ARG52764)



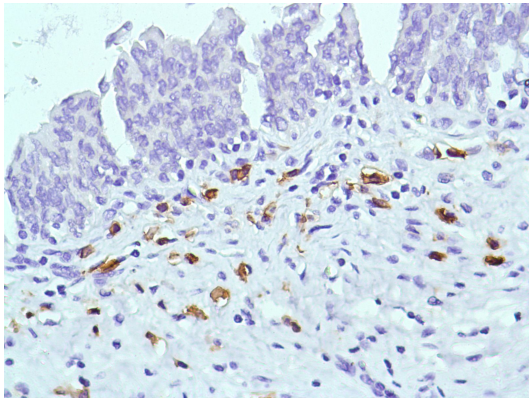
ARG52764 anti-CD38 antibody [SP149] IHC-P image

Immunohistochemistry: Human Colon stained with CD38 antibody [SP149] (ARG52764)



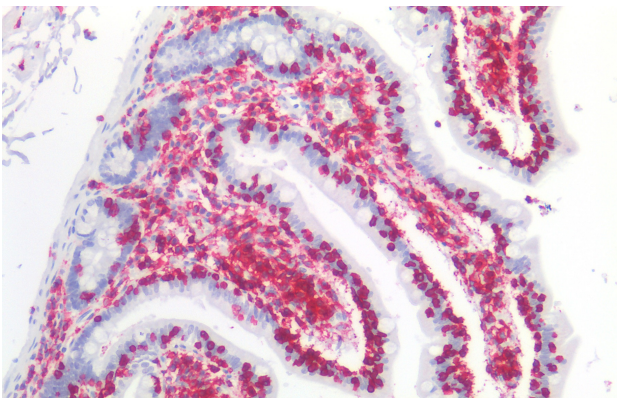
ARG52764 anti-CD38 antibody [SP149] IHC-P image

Immunohistochemistry: Human Colon Adenocarcinoma stained with CD38 antibody [SP149] (ARG52764)



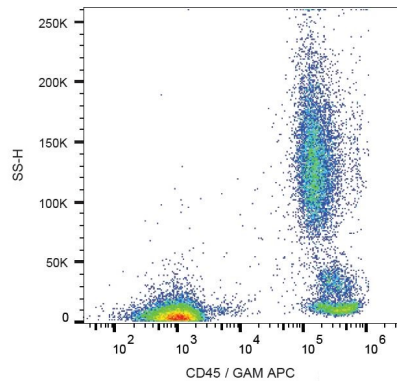
ARG52764 anti-CD38 antibody [SP149] IHC-P image

Immunohistochemistry: Human Bladder stained with CD38 antibody [SP149] (ARG52764)



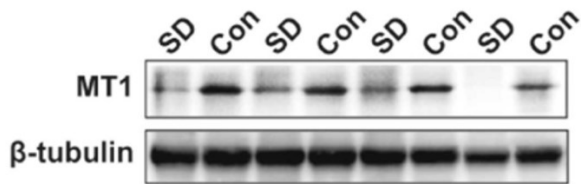
ARG62856 anti-CD45 antibody [MEM-28] IHC-P image

Immunohistochemistry: Paraffin-embedded Human small intestine tissue stained with ARG62856 anti-CD45 antibody [MEM-28] at 10 μ g/ml dilution.



ARG62856 anti-CD45 antibody [MEM-28] FACS image

Flow Cytometry: Human peripheral blood cells stained with ARG62856 anti-CD45 antibody [MEM-28], followed by incubation with APC labelled Goat anti-Mouse secondary antibody.



ARG65351 Goat anti-Rabbit IgG antibody (HRP) WB image

Western blot: Rat placental stained with [ARG57589 anti-MTNR1A antibody](#) at 1:1000 dilution, ARG65351 Goat anti-Rabbit IgG antibody (HRP) 1:5000 dilution.

From Jinzhi Li et al. J Reprod Immunol. (2024), [doi: 10.1016/j.jri.2023.104166](#), Fig. 2.B.