

ARG30118 Tight Junction Marker Antibody Panel (Claudin1, E Cadherin, Occludin, ZO1)

Package: 1 kit
Store at: -20°C

Component

Cat. No.	Component Name	Host clonality	Reactivity	Application	Package	
ARG65099	anti-ZO1 antibody	Goat pAb	Hu	ICC/IF	50 µg	
ARG52871	ARG53386	anti-Occludin antibody	Rabbit pAb	Hu, Ms	IHC-P, WB	250 µl

Summary

Product Description

Tight junctions, also known as occluding junctions or zonulae occludentes, are the closely associated areas of two cells whose membranes join together forming a virtually impermeable barrier to fluid. It functions to join two cells together and serve as a barrier to maintain osmotic balance. Tight junctions are mainly composed of Claudin and Occludin proteins joining the junctions to cytoskeleton through the adaptor proteins known as Zona Occudens (ZO). Cadherins, on the other hands, are type-1 transmembrane proteins that play important roles in adhering junctions to tissues together.

Hulpiau et al. *Int J Biochem Cell Biol* 41:349-69 (2009)
Hewitt et al. *BMC Cancer* 6: 186 (2006)
Ruffer et al. *Eur J Cell Biol* 83: 135-44 (2004)
Akatsuka et al. *J Cell Biol* 133: 43-47 (1996)

Properties

Storage instruction

For continuous use, store undiluted antibody at 2-8°C for up to a week. For long-term storage, aliquot and store at -20°C or below. Storage in frost free freezers is not recommended. Avoid repeated freeze/thaw cycles. Suggest spin the vial prior to opening. The antibody solution should be gently mixed before use.

Note

For laboratory research only, not for drug, diagnostic or other use.

Bioinformation

Research Area

Cancer antibody; Controls and Markers antibody; Developmental Biology antibody; Signaling Transduction antibody

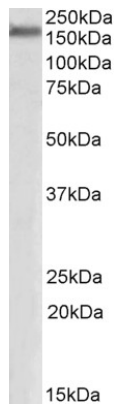
ARG53386 anti-Occludin antibody WB image

Western Blot: Kidney stained with Occludin antibody (ARG53386)



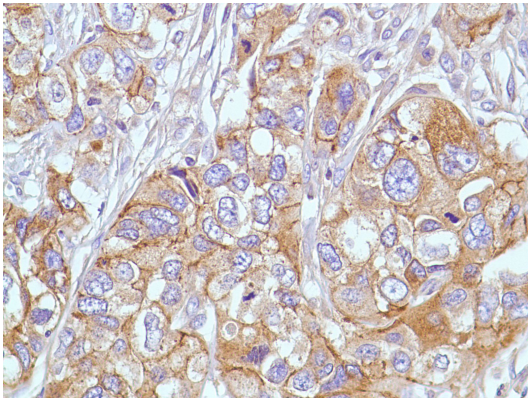
ARG65099 anti-ZO-1 antibody WB image

Western Blot: Human Cerebral Cortex lysate (35 µg protein in RIPA buffer) stained with ARG65099 anti-ZO-1 antibody at 0.3 µg/ml dilution.



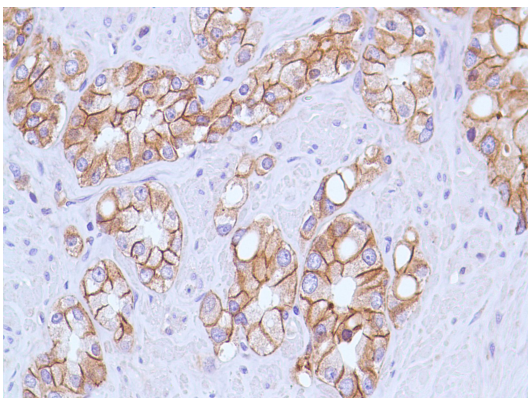
ARG52599 anti-Cadherin-E/E-Cadherin antibody [SPM471] IHC-P image

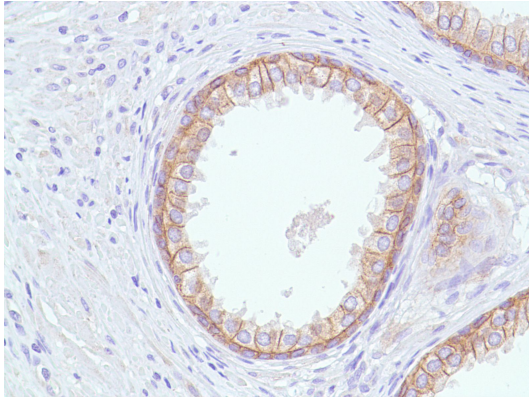
Immunohistochemistry: Human Bladder Transitional Cell Carcinoma stained with Cadherin-E/E-Cadherin antibody [SPM471] (ARG52599)



ARG52599 anti-Cadherin-E/E-Cadherin antibody [SPM471] IHC-P image

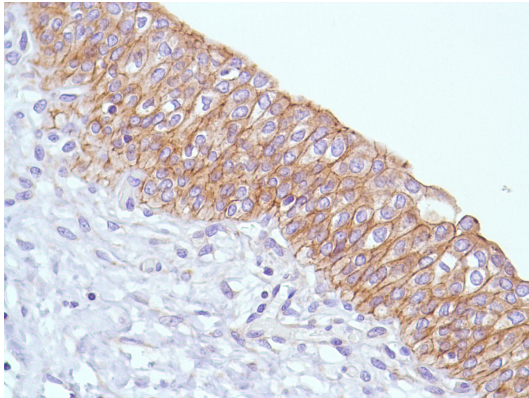
Immunohistochemistry: Human Prostate Adenocarcinoma stained with Cadherin-E/E-Cadherin antibody [SPM471] (ARG52599)





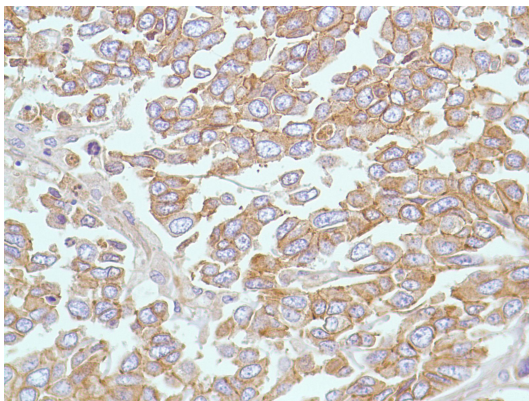
ARG52599 anti-Cadherin-E/E-Cadherin antibody [SPM471] IHC-P image

Immunohistochemistry: Human Prostate stained with Cadherin-E/E-Cadherin antibody [SPM471] (ARG52599)



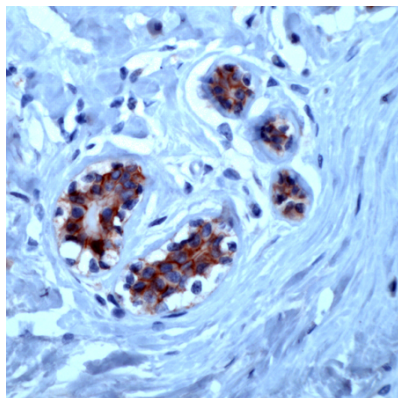
ARG52599 anti-Cadherin-E/E-Cadherin antibody [SPM471] IHC-P image

Immunohistochemistry: Human Bladder stained with Cadherin-E/E-Cadherin antibody [SPM471] (ARG52599)



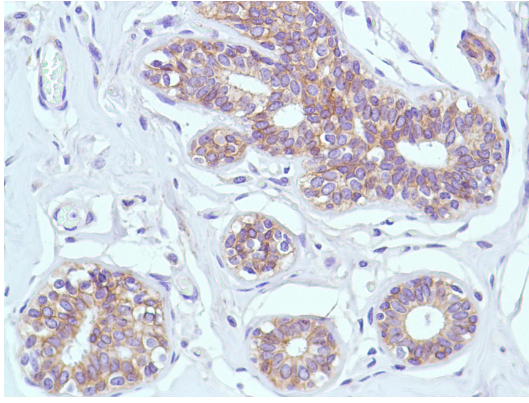
ARG52599 anti-Cadherin-E/E-Cadherin antibody [SPM471] IHC-P image

Immunohistochemistry: Human Breast Ductal Carcinoma stained with Cadherin-E/E-Cadherin antibody [SPM471] (ARG52599)



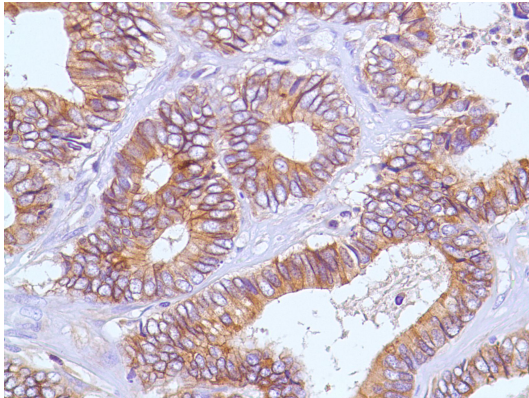
ARG52599 anti-Cadherin-E/E-Cadherin antibody [SPM471] IHC-P image

Immunohistochemistry: Human Breast stained with Cadherin-E/E-Cadherin antibody [SPM471] (ARG52599)



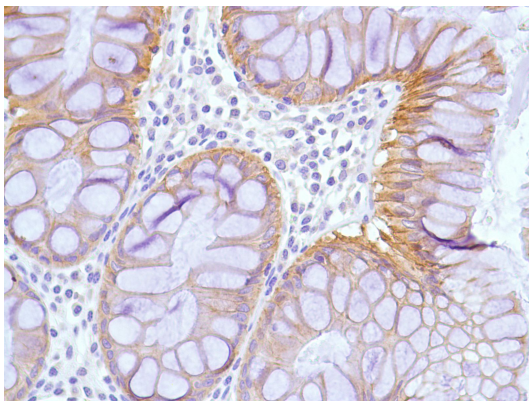
ARG52599 anti-Cadherin-E/E-Cadherin antibody [SPM471] IHC-P image

Immunohistochemistry: Human Breast stained with Cadherin-E/E-Cadherin antibody [SPM471] (ARG52599)



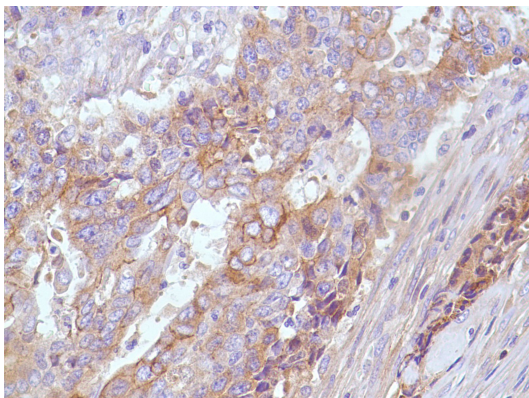
ARG52599 anti-Cadherin-E/E-Cadherin antibody [SPM471] IHC-P image

Immunohistochemistry: Human Colon Adenocarcinoma stained with Cadherin-E/E-Cadherin antibody [SPM471] (ARG52599)



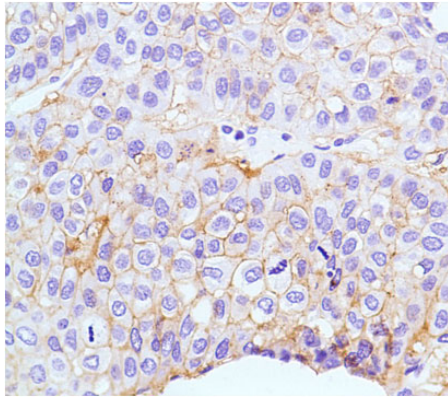
ARG52599 anti-Cadherin-E/E-Cadherin antibody [SPM471] IHC-P image

Immunohistochemistry: Human Colon stained with Cadherin-E/E-Cadherin antibody [SPM471] (ARG52599)



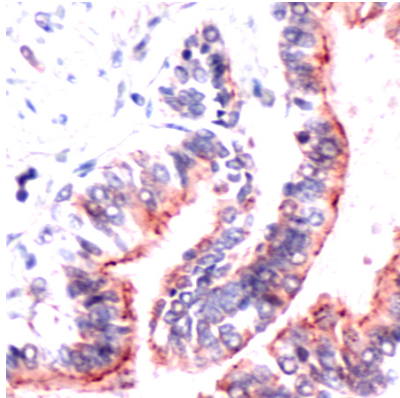
ARG52599 anti-Cadherin-E/E-Cadherin antibody [SPM471] IHC-P image

Immunohistochemistry: Human Endometrial Adenocarcinoma stained with Cadherin-E/E-Cadherin antibody [SPM471] (ARG52599)



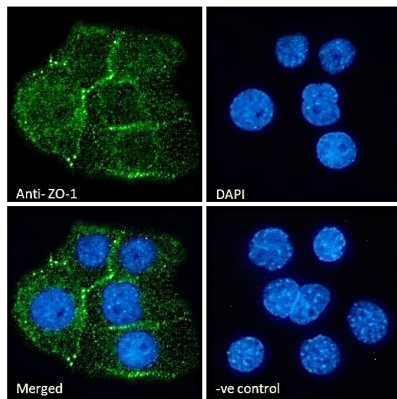
ARG52871 anti-Claudin-1 antibody [SP128] IHC-P image

Immunohistochemistry: Human Hepatocellular Carcinoma stained with Claudin-1 antibody [SP128] (ARG52871)



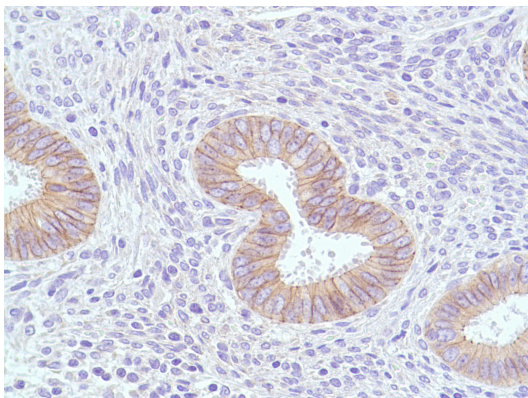
ARG53386 anti-Occludin antibody IHC-P image

Immunohistochemistry: Human Lung stained with Occludin antibody (ARG53386)



ARG65099 anti-ZO1 antibody ICC/IF image

Immunofluorescence: A431 stained with ARG65099 anti-ZO1 antibody at 10ug/ml dilution.



ARG52599 anti-Cadherin-E/E-Cadherin antibody [SPM471] IHC-P image

Immunohistochemistry: Human Endometrium stained with Cadherin-E/E-Cadherin antibody [SPM471] (ARG52599)