

## ARG30106 Mitochondria/Caspase Dependant Apoptosis Marker Antibody Duo (Caspase9, Cytochrome c)

Package: 1 pair  
Store at: -20°C

### Component

Cat. No.	Component Name	Host clonality	Reactivity	Application	Package
ARG20048	anti-Caspase 9 (cleaved) antibody	Rabbit pAb	Hu	IP, WB	25 µg
ARG20006	anti-Cytochrome C antibody	Rabbit pAb	Hu, Ms, Rat, Bov, Chk, Dog	IP, WB	25 µg

### Summary

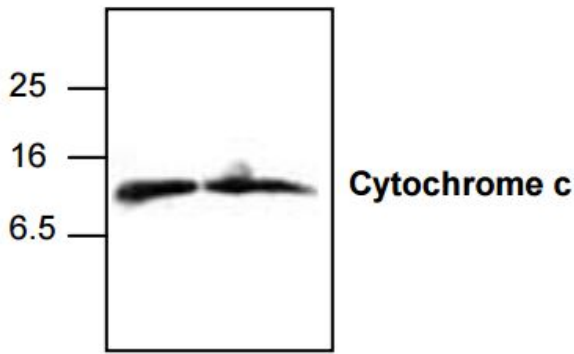
Product Description	Cytochrome C is an electron transport protein localized in the mitochondria. When a cell receive intra- or extra-cellular death signal, Cytochrome C is then released from mitochondria to cytoplasm and trigger Procaspase 9 activation. Detection of the cytoplasmic release of Cytochrome C and activation of Caspase 9 with anti-Cytochrome C (ARG20006) and anti-Caspase 9 (ARG51317) antibodies are early indications that a cell is undergoing apoptosis.
Target Name	Mitochondria/Caspase Dependant Apoptosis Marker
Alternate Names	Mitochondria/Caspase Dependant Apoptosis Marker antibody; Cytochrome C antibody; Caspase 9 (cleaved) antibody

### Properties

Storage instruction	For continuous use, store undiluted antibody at 2-8°C for up to a week. For long-term storage, aliquot and store at -20°C or below. Storage in frost free freezers is not recommended. Avoid repeated freeze/thaw cycles. Suggest spin the vial prior to opening. The antibody solution should be gently mixed before use.
Note	For laboratory research only, not for drug, diagnostic or other use.

### Bioinformation

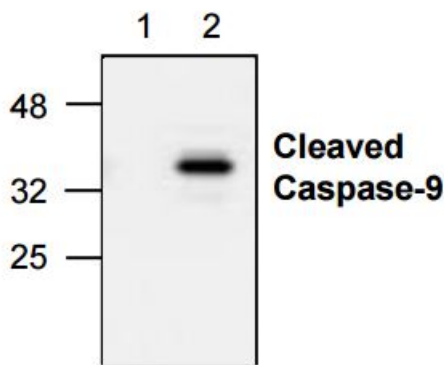
Gene Full Name	Antibody Duo for Mitochondria/Caspase Dependant Apoptosis Marker (Caspase9, Cytochrome c)
Research Area	Cancer antibody; Cell Biology and Cellular Response antibody; Cell Death antibody; Metabolism antibody; Signaling Transduction antibody



ARG20006 anti-Cytochrome c antibody WB image

Western Blot: 1. Jurkat cell lysate 2. 3T3 cell lysate stained with anti-Cytochrome c antibody (ARG20006).

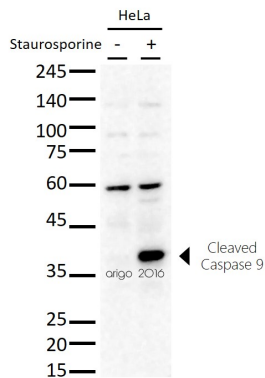
The cytochrome c antibody detects the 12.6 kDa cytochrome c from human, mouse, and rat samples. Jurkat cell lysate, NIH3T3 cell lysate, and rat kidney tissue lysate can be used as positive controls.



ARG20048 anti-Caspase-9 (Active) antibody WB image

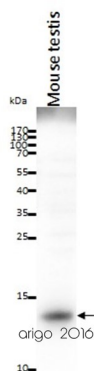
Western Blot: 1. Untreated Jurkat cell lysate 2. Etoposide treated Jurkat cell lysate stained with anti-Caspase 9 active antibody (ARG20048).

The anti-active caspase-9 antibody recognizes only the cleaved caspase-9 (37 kDa). It does not recognize full-length caspase-9 or any other caspases.



ARG20048 anti-Caspase 9 (cleaved) antibody WB image

Western blot: 20 µg of HeLa untreated or treated with Staurosporine and stained with ARG20048 anti-Caspase 9 (cleaved) antibody at 1:500 dilution.



ARG20006 anti-Cytochrome C antibody WB image

Western blot: 20 µg of Mouse testis lysate stained with ARG20006 anti-Cytochrome C antibody at 2 µg/ml dilution.