

## ARG30098 Phospho CREB Antibody Duo (Total, pS133)

Package: 1 pair  
Store at: -20°C

### Component

Cat. No.	Component Name	Host clonality	Reactivity	Application	Package
ARG54699	anti-CREB antibody	Mouse mAb	Hu, Ms, Rat	WB	50 µl
ARG51556	anti-CREB phospho (Ser133) antibody	Rabbit pAb	Hu, Ms, Rat	IHC-P, WB	50 µl

### Summary

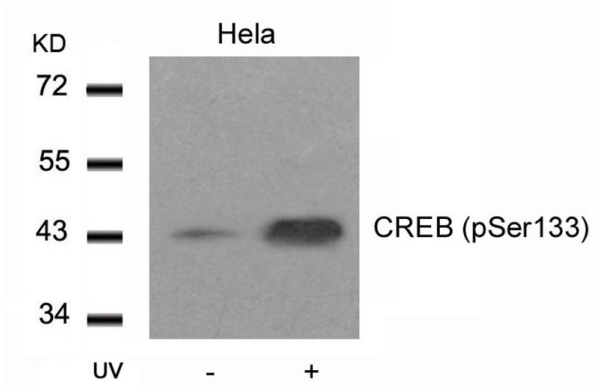
Product Description	Related news: <a href="#">A designer cell-based histamine-specific human allergy profiler</a>
Target Name	CREB
Alternate Names	Phospho CREB antibody; Phospho cAMP responsive element binding protein antibody; CREB phospho (Ser133) antibody; CREB antibody

### Properties

Storage instruction	For continuous use, store undiluted antibody at 2-8°C for up to a week. For long-term storage, aliquot and store at -20°C or below. Storage in frost free freezers is not recommended. Avoid repeated freeze/thaw cycles. Suggest spin the vial prior to opening. The antibody solution should be gently mixed before use.
Note	For laboratory research only, not for drug, diagnostic or other use.

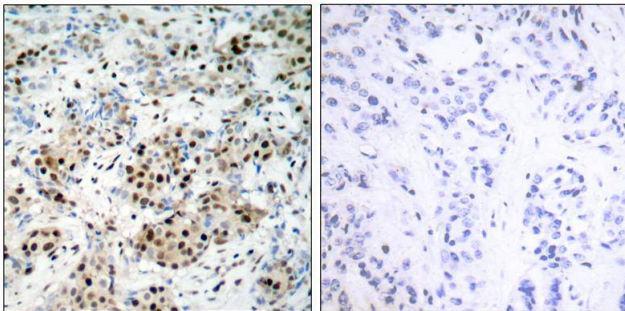
### Bioinformation

Gene Full Name	Phospho cAMP responsive element binding protein (CREB) Antibody Duo (Total, pS133)
Research Area	Gene Regulation antibody; Immune System antibody



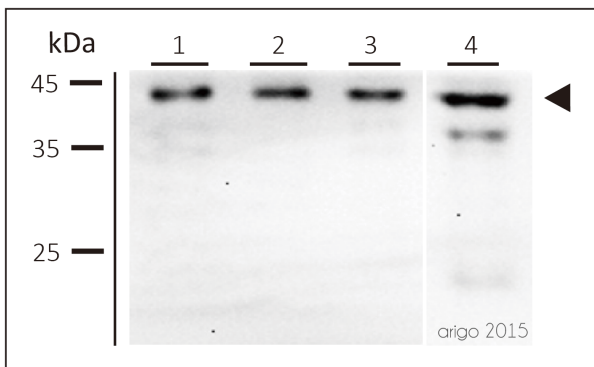
ARG51556 anti-CREB phospho (Ser133) antibody WB image

Western Blot: extracts from HeLa cells untreated or treated with UV stained with anti-CREB (phospho Ser133) antibody ARG51556.



ARG51556 anti-CREB phospho (Ser133) antibody IHC-P image

Immunohistochemistry: paraffin-embedded human breast carcinoma tissue stained with anti-CREB (phospho Ser133) antibody ARG51556 (left) or the same antibody preincubated with blocking peptide (right).



ARG54699 anti-CREB antibody WB image

Western blot: 30 µg of 1) U87-MG, 2) HEK293T, 3) MEF, and 4) Mouse brain lysate stained with ARG54699 anti-CREB antibody at 1:500 dilution.