

## ARG30094 Phospho Beclin Antibody Duo (pS234, pS295)

Package: 1 pair  
Store at: -20°C

### Component

Cat. No.	Component Name	Host clonality	Reactivity	Application	Package
ARG52234	anti-Beclin 1 phospho (Ser234) antibody	Rabbit pAb	Hu	WB	50 µl
ARG52235	anti-Beclin 1 phospho (Ser295) antibody	Rabbit pAb	Hu	WB	50 µl

### Summary

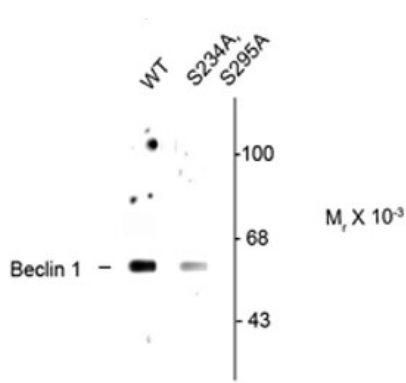
Product Description	Autophagy is an essential process that consists of selective degradation of cellular components especially during cell stress and cell cycle extinguishment. Beclin1, as a key molecule in controlling autophagy pathway, can activate both cell survival and cell death pathway through its interaction with different partners. Beclin pSer234 has been shown to interact with 14-3-3 proteins through AKT-mediated phosphorylations. Since phosphorylation of Beclin1 at Ser234 and Ser295 results in autophagy inhibition and oncogenesis, this PTM duo is useful for the detailed study of Beclin1 function as well as its potential in cancer gene therapy.
Target Name	Beclin
Alternate Names	Phospho Beclin antibody; Beclin 1 phospho (Ser234) antibody; Beclin 1 phospho (Ser295) antibody

### Properties

Storage instruction	For continuous use, store undiluted antibody at 2-8°C for up to a week. For long-term storage, aliquot and store at -20°C or below. Storage in frost free freezers is not recommended. Avoid repeated freeze/thaw cycles. Suggest spin the vial prior to opening. The antibody solution should be gently mixed before use.
Note	For laboratory research only, not for drug, diagnostic or other use.

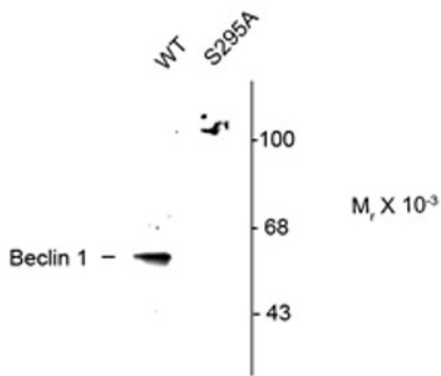
### Bioinformation

Gene Full Name	Antibody Duo for Phospho Beclin (pS234, pS295)
Research Area	Cancer antibody; Cell Death antibody; Gene Regulation antibody; Metabolism antibody; Microbiology and Infectious Disease antibody



ARG52234 anti-Beclin1 phospho (Ser234) antibody WB image

Western Blot: beclin-1 expressed stained with Beclin1 (phospho Ser234) antibody (ARG52234) at 1: 250 dilution in HeLa cells showing specific immunolabeling of beclin-1 in wild-type (WT), in addition, this immunolabeling is decreased in the beclin-1 double alanine substitution mutant (S234A, S295A) samples.



ARG52235 anti-Beclin1 phospho (Ser295) antibody WB image

Western Blot: beclin-1 expressed stained with Beclin1 (phospho Ser295) antibody (ARG52235) at 1: 250 dilution in HeLa cells showing specific immunolabeling of beclin-1 in wild-type (WT), in addition, this immunolabeling is eliminated in the beclin-1 alanine substitution mutant (S295A) samples.