

ARG24186 anti-C3d antibody

Package: 500 µl
Store at: -20°C

Summary

Product Description	Purification by Ion Exchange chromatography.
Tested Reactivity	Hu
Tested Application	ELISA, IHC-P
Host	Sheep
Clonality	Polyclonal
Isotype	IgG
Target Name	C3d
Species	Human
Immunogen	Purified C3d from human plasma.
Conjugation	Un-conjugated
Alternate Names	C3; Complement C3; CPAMD1; ARMD9; C3a; C3b; C3 And PZP-Like Alpha-2-Macroglobulin Domain-Containing Protein 1; Complement Component C3a; Complement Component C3b; Complement Component 3; C3a Anaphylatoxin; Prepro-C3; Epididymis Secretory Sperm Binding Protein Li 62p; Acylation-Stimulating Protein Cleavage Product; HEL-S-62p; AHUS5; ASP

Application Instructions

Application table	Application	Dilution
	ELISA	Assay-dependent
	IHC-P	1:100
Application Note	* The dilutions indicate recommended starting dilutions and the optimal dilutions or concentrations should be determined by the scientist.	

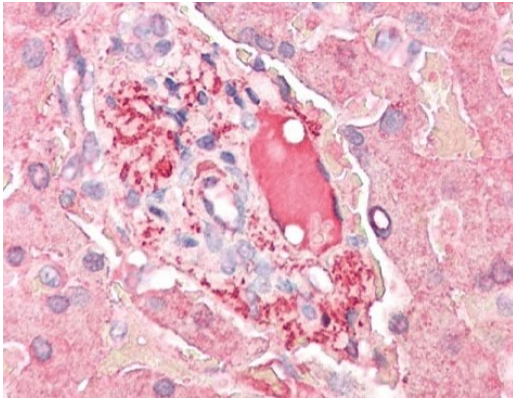
Properties

Form	Liquid
Purification	Purified C3d from pooled activated serum.
Buffer	Glycine buffered saline, 0.1% EACA, 0.09% Sodium azide, 0.01% Benzamidine and 1mM EDTA.
Preservative	0.09% Sodium azide, 0.01% Benzamidine and 1mM EDTA
Storage instruction	For continuous use, store undiluted antibody at 2-8°C for up to a week. For long-term storage, aliquot and store at -20°C or below. Storage in frost free freezers is not recommended. Avoid repeated freeze/thaw cycles. Suggest spin the vial prior to opening. The antibody solution should be gently mixed before use.
Note	For laboratory research only, not for drug, diagnostic or other use.

Bioinformation

Gene Symbol	C3
Gene Full Name	Complement C3
Background	Complement component C3 plays a central role in the activation of complement system. Its activation is required for both classical and alternative complement activation pathways. The encoded preproprotein is proteolytically processed to generate alpha and beta subunits that form the mature protein, which is then further processed to generate numerous peptide products. The C3a peptide, also known as the C3a anaphylatoxin, modulates inflammation and possesses antimicrobial activity. Mutations in this gene are associated with atypical hemolytic uremic syndrome and age-related macular degeneration in human patients. [provided by RefSeq, Nov 2015]
Function	C3 plays a central role in the activation of the complement system. Its processing by C3 convertase is the central reaction in both classical and alternative complement pathways. After activation C3b can bind covalently, via its reactive thioester, to cell surface carbohydrates or immune aggregates
Calculated Mw	187 kDa
PTM	Cleavage on pair of basic residues, Disulfide bond, Glycoprotein, Phosphoprotein, Thioester bond
Cellular Localization	Secreted

Images



ARG24186 anti-C3d antibody IHC-P image

Immunohistochemistry: Human liver stained with ARG24186 anti-C3d antibody.