

ARG24184
anti-LAMTOR1 antibody [rCD01/3G6]Package: 100 µl
Store at: -20°C

Summary

Product Description	Mouse Monoclonal antibody [rCD01/3G6] recognizes LAMTOR1
Tested Reactivity	Hu, Ms
Tested Application	WB
Host	Mouse
Clonality	Monoclonal
Clone	rCD01/3G6
Isotype	IgG2a
Target Name	LAMTOR1
Species	Human
Immunogen	recombinant protein of Human LAMTOR1 (a.a. 1-162)
Conjugation	Un-conjugated
Alternate Names	LAMTOR1; Late Endosomal/Lysosomal Adaptor, MAPK And MTOR Activator 1; P27RF-Rho; Protein Associated With DRMs And Endosomes; Ragulator1; C11orf59; Pdro; P18; Late Endosomal/Lysosomal Adaptor And MAPK And MTOR Activator 1; P27kip1 Releasing Factor From RhoA; P27Kip1-Releasing Factor From RhoA; Ragulator Complex Protein LAMTOR1; Lipid Raft Adaptor Protein P18; FLJ20625; Chromosome 11 Open Reading Frame 59; Ragulator Complex Protein PDRO; RhoA Activator C11orf59; PDRO

Application Instructions

Application table	Application	Dilution
	WB	1:500

Application Note * The dilutions indicate recommended starting dilutions and the optimal dilutions or concentrations should be determined by the scientist.

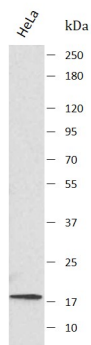
Properties

Form	Liquid
Purification	Affinity chromatography
Buffer	PBS and 0.09% Sodium Azide
Preservative	0.09% Sodium Azide
Storage instruction	For continuous use, store undiluted antibody at 2-8°C for up to a week. For long-term storage, aliquot and store at -20°C or below. Storage in frost free freezers is not recommended. Avoid repeated freeze/thaw cycles. Suggest spin the vial prior to opening. The antibody solution should be gently mixed before use.
Note	For laboratory research only, not for drug, diagnostic or other use.

Bioinformation

Gene Symbol	LAMTOR1
Gene Full Name	Late Endosomal/Lysosomal Adaptor, MAPK And MTOR Activator 1
Background	Enables GTPase binding activity. Contributes to guanyl-nucleotide exchange factor activity and molecular adaptor activity. Involved in several processes, including cholesterol homeostasis; positive regulation of TOR signaling; and regulation of cholesterol transport. Located in lysosome. Part of Ragulator complex. [provided by Alliance of Genome Resources, Apr 2022]
Function	May also play a role in RHOA activation
Calculated Mw	18 kDa
PTM	Isopeptide bond, Lipoprotein, Myristate, Palmitate, Phosphoprotein, Ubl conjugation

Images



ARG24184 anti-LAMTOR1 antibody [rCD01/3G6] WB image

Western blot: HeLa stained with ARG24184 anti-LAMTOR1 antibody [rCD01/3G6] at 1:500 dilution.