

## ARG24155 anti-alpha Synuclein antibody [3C11]

Package: 50 µg  
Store at: -20°C

### Summary

Product Description	Mouse Monoclonal antibody [3C11] recognizes alpha Synuclein
Tested Reactivity	Hu, Ms, Rat
Tested Application	ELISA, ICC/IF, IHC-P, WB
Host	Mouse
Clonality	Monoclonal
Clone	3C11
Isotype	IgG1
Target Name	alpha Synuclein
Species	Human
Immunogen	Monomer of Human alpha synuclein
Conjugation	Un-conjugated
Alternate Names	Non-A4 component of amyloid precursor; Alpha-synuclein; PARK4; PARK1; PD1; NACP; Non-A beta component of AD amyloid

### Application Instructions

Application table	Application	Dilution
	ELISA	1:1000
	ICC/IF	1:100
	IHC-P	Assay-dependent
	WB	1:1000
Application Note	* The dilutions indicate recommended starting dilutions and the optimal dilutions or concentrations should be determined by the scientist.	
Observed Size	~ 17 kDa	

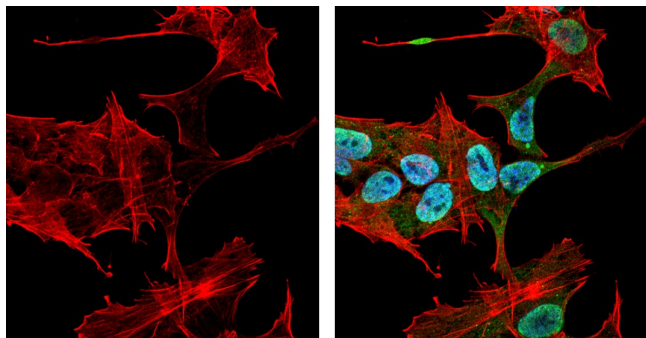
### Properties

Form	Liquid
Purification	Purification with Protein G.
Buffer	PBS (pH 7.4), 50% Glycerol and 0.09% Sodium azide
Preservative	0.09% Sodium azide
Stabilizer	50% Glycerol
Concentration	1 mg/ml

<b>Storage instruction</b>	For continuous use, store undiluted antibody at 2-8°C for up to a week. For long-term storage, aliquot and store at -20°C. Storage in frost free freezers is not recommended. Avoid repeated freeze/thaw cycles. Suggest spin the vial prior to opening. The antibody solution should be gently mixed before use.
<b>Note</b>	For laboratory research only, not for drug, diagnostic or other use.

## Bioinformation

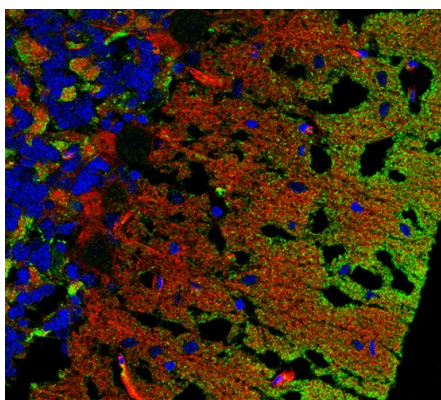
<b>Gene Symbol</b>	SNCA
<b>Gene Full Name</b>	synuclein, alpha (non A4 component of amyloid precursor)
<b>Background</b>	Alpha-synuclein is a member of the synuclein family, which also includes beta- and gamma-synuclein. Synucleins are abundantly expressed in the brain and alpha- and beta-synuclein inhibit phospholipase D2 selectively. SNCA may serve to integrate presynaptic signaling and membrane trafficking. Defects in SNCA have been implicated in the pathogenesis of Parkinson disease. SNCA peptides are a major component of amyloid plaques in the brains of patients with Alzheimer's disease. Alternatively spliced transcripts encoding different isoforms have been identified for this gene. [provided by RefSeq, Feb 2016]
<b>Function</b>	Neuronal protein that plays several roles in synaptic activity such as regulation of synaptic vesicle trafficking and subsequent neurotransmitter release. Participates as a monomer in synaptic vesicle exocytosis by enhancing vesicle priming, fusion and dilation of exocytotic fusion pores (PubMed:28288128, PubMed:30404828). Mechanistically, acts by increasing local Ca(2+) release from microdomains which is essential for the enhancement of ATP-induced exocytosis (PubMed:30404828). Acts also as a molecular chaperone in its multimeric membrane-bound state, assisting in the folding of synaptic fusion components called SNAREs (Soluble NSF Attachment Protein REceptors) at presynaptic plasma membrane in conjunction with cysteine string protein-alpha/DNAJC5 (PubMed:20798282). This chaperone activity is important to sustain normal SNARE-complex assembly during aging (PubMed:20798282). Plays also a role in the regulation of the dopamine neurotransmission by associating with the dopamine transporter (DAT1) and thereby modulating its activity (PubMed:26442590). [UniProt]
<b>Highlight</b>	Related products: <a href="#">anti-alpha Synuclein antibody [3C11]</a>
<b>Calculated Mw</b>	14 kDa
<b>PTM</b>	Phosphorylated, predominantly on serine residues. Phosphorylation by CK1 appears to occur on residues distinct from the residue phosphorylated by other kinases. Phosphorylation of Ser-129 is selective and extensive in synucleinopathy lesions. In vitro, phosphorylation at Ser-129 promoted insoluble fibril formation. Phosphorylated on Tyr-125 by a PTK2B-dependent pathway upon osmotic stress.  Hallmark lesions of neurodegenerative synucleinopathies contain alpha-synuclein that is modified by nitration of tyrosine residues and possibly by dityrosine cross-linking to generated stable oligomers.  Ubiquitinated. The predominant conjugate is the diubiquitinated form (By similarity).  Acetylation at Met-1 seems to be important for proper folding and native oligomeric structure. [UniProt]
<b>Cellular Localization</b>	Cytoplasm, cytosol. Membrane. Nucleus. Cell junction, synapse. Secreted. Note=Membrane-bound in dopaminergic neurons. [UniProt]



ARG24155 anti-alpha Synuclein antibody [3C11] ICC/IF image

Immunofluorescence: SK-N-BE stained with ARG24155 anti-alpha Synuclein antibody [3C11] at 1:100 dilution.

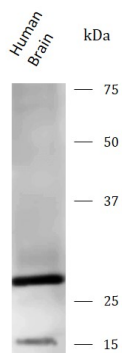
---



ARG24155 anti-alpha Synuclein antibody [3C11] IHC-P image

Immunohistochemistry: Rat cerebellum stained with ARG24155 anti-alpha Synuclein antibody [3C11] at 1:25 dilution.

---



ARG24155 anti-alpha Synuclein antibody [3C11] WB image

Western blot: Human brain stained with ARG24155 anti-alpha Synuclein antibody [3C11] at 1:1000 dilution.

---