

ARG24099 anti-CD273 / PD-L2 antibody [4E10]

Package: 50 µg
Store at: -20°C

Summary

Product Description	Mouse Monoclonal antibody [4E10] recognizes CD273 / PD-L2
Tested Reactivity	Hu, Ms
Predict Reactivity	Rat
Tested Application	FACS, ICC/IF, IHC-P, WB
Host	Mouse
Clonality	Monoclonal
Clone	4E10
Isotype	IgG1
Target Name	CD273 / PD-L2
Species	Human
Immunogen	Recombinant protein fragment within extracellular domain of Human CD273/PD-L2.
Conjugation	Un-conjugated
Alternate Names	B7DC; bA574F11.2; PDL2; CD antigen CD273; PD-L2; Programmed cell death 1 ligand 2; CD273; Btdc; PDCD1L2; Programmed death ligand 2; Butyrophilin B7-DC; B7-DC; PD-1 ligand 2; PDCD1 ligand 2

Application Instructions

Application table	Application	Dilution
	FACS	5 - 20 µg/mL
	ICC/IF	2 - 20 µg/mL
	IHC-P	2 - 20 µg/mL
	WB	0.5 - 1 µg/mL
Application Note	IHC-P: Antigen Retrieval:Heat mediated was performed using Citrate buffer (pH 6.0). * The dilutions indicate recommended starting dilutions and the optimal dilutions or concentrations should be determined by the scientist.	
Observed Size	~30 - 50 kDa	

Properties

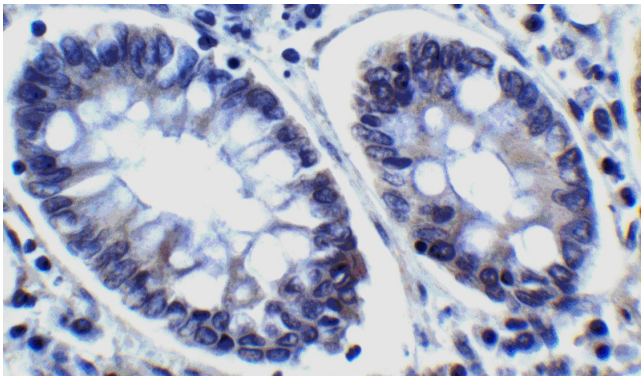
Form	Liquid
Purification	Purification with Protein A.
Buffer	PBS, 0.02% Sodium azide and 50% Glycerol.
Preservative	0.02% Sodium azide

Stabilizer	50% Glycerol
Concentration	Batch dependent
Storage instruction	For continuous use, store undiluted antibody at 2-8°C for up to a week. For long-term storage, aliquot and store at -20°C or below. Storage in frost free freezers is not recommended. Avoid repeated freeze/thaw cycles. Suggest spin the vial prior to opening. The antibody solution should be gently mixed before use.
Note	For laboratory research only, not for drug, diagnostic or other use.

Bioinformation

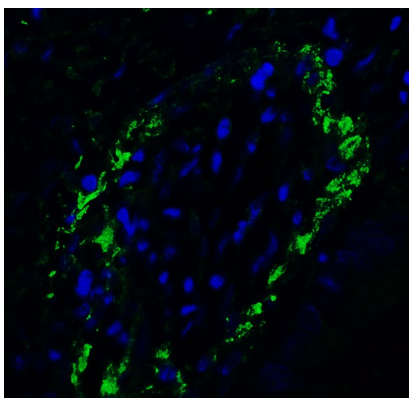
Gene Symbol	PDCD1LG2
Gene Full Name	programmed cell death 1 ligand 2
Function	Involved in the costimulatory signal, essential for T-cell proliferation and IFNG production in a PDCD1-independent manner. Interaction with PDCD1 inhibits T-cell proliferation by blocking cell cycle progression and cytokine production (By similarity). [UniProt]
Highlight	Related products: PD-L2 antibodies ; PD-L2 ELISA Kits ; Related news: The best solution for PD-1/PD-L1 research
Calculated Mw	31 kDa
PTM	Disulfide bond; Glycoprotein
Cellular Localization	Cell membrane; Membrane; Secreted

Images



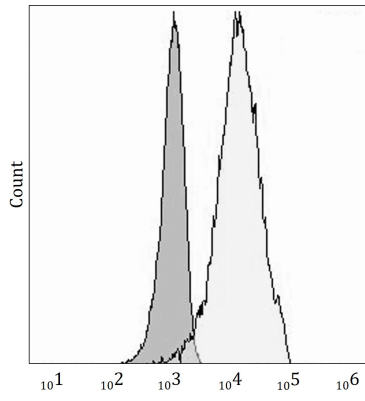
ARG24099 anti-CD273 / PD-L2 antibody [4E10] UHC-P image

Immunohistochemistry: Formalin-fixed and paraffin-embedded Human colon carcinoma stained with ARG24099 anti-CD273 / PD-L2 antibody [4E10].



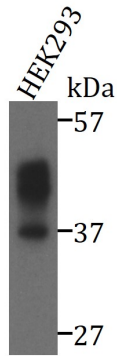
ARG24099 anti-CD273 / PD-L2 antibody [4E10] ICC/IF image

Immunofluorescence: Human colon tissue stained with ARG24099 anti-CD273 / PD-L2 antibody [4E10].



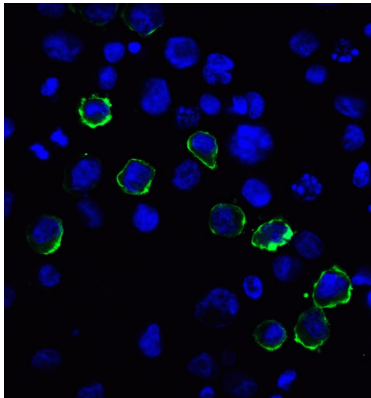
ARG24099 anti-CD273 / PD-L2 antibody [4E10] FACS image

Flow Cytometry: HEK293 cells stained with ARG24099 anti-CD273 / PD-L2 antibody [4E10] (white). Unlabelled sample (gray) was used as a control.



ARG24099 anti-CD273 / PD-L2 antibody [4E10] WB image

Western blot: HEK293 cells were stained with ARG24099 anti-CD273 / PD-L2 antibody [4E10].



ARG24099 anti-CD273 / PD-L2 antibody [4E10] ICC/IF image

Immunofluorescence: HEK293 cells stained with ARG24099 anti-CD273 / PD-L2 antibody [4E10].