

ARG24098 anti-CD273 / PD-L2 antibody

Package: 50 µg
Store at: -20°C

Summary

Product Description	Rabbit Polyclonal antibody recognizes CD273 / PD-L2
Tested Reactivity	Hu, Ms
Predict Reactivity	Rat
Tested Application	IHC-P, WB
Host	Rabbit
Clonality	Polyclonal
Isotype	IgG
Target Name	CD273 / PD-L2
Species	Human
Immunogen	Synthetic peptide within amino acids 140-190 of CD273 / PD-L2.
Conjugation	Un-conjugated
Alternate Names	B7DC; bA574F11.2; PDL2; CD antigen CD273; PD-L2; Programmed cell death 1 ligand 2; CD273; Btdc; PDCD1L2; Programmed death ligand 2; Butyrophilin B7-DC; B7-DC; PD-1 ligand 2; PDCD1 ligand 2

Application Instructions

Application table	Application	Dilution
	IHC-P	2.5 - 20 µg/mL
	WB	0.5 - 4 µg/mL
Application Note	IHC-P: Antigen Retrieval:Heat mediated was performed using Citrate buffer (pH 6.0). * The dilutions indicate recommended starting dilutions and the optimal dilutions or concentrations should be determined by the scientist.	
Observed Size	~30 - 50 kDa	

Properties

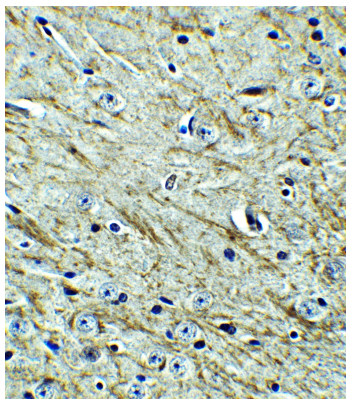
Form	Liquid
Purification	Affinity purification with immunogen.
Buffer	PBS and 0.02% Sodium azide
Preservative	0.02% Sodium azide
Concentration	Batch dependent
Storage instruction	For continuous use, store undiluted antibody at 2-8°C for up to a week. For long-term storage, aliquot and store at -20°C or below. Storage in frost free freezers is not recommended. Avoid repeated freeze/thaw cycles. Suggest spin the vial prior to opening. The antibody solution should be gently mixed before use.

Note For laboratory research only, not for drug, diagnostic or other use.

Bioinformation

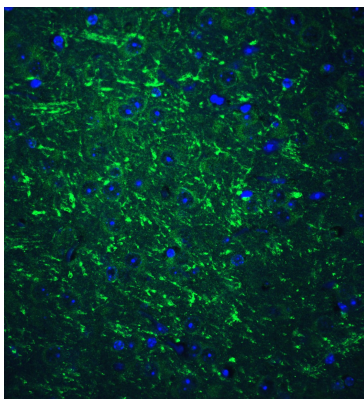
Gene Symbol	PDCD1LG2
Gene Full Name	programmed cell death 1 ligand 2
Function	Involved in the costimulatory signal, essential for T-cell proliferation and IFNG production in a PDCD1-independent manner. Interaction with PDCD1 inhibits T-cell proliferation by blocking cell cycle progression and cytokine production (By similarity). [UniProt]
Highlight	Related products: PD-L2 antibodies ; PD-L2 ELISA Kits ; Related news: The best solution for PD-1/PD-L1 research
Calculated Mw	31 kDa
PTM	Disulfide bond; Glycoprotein
Cellular Localization	Cell membrane; Membrane; Secreted

Images



ARG24098 anti-CD273 / PD-L2 antibody IHC-P image

Immunohistochemistry: Formalin-fixed and paraffin-embedded Mouse Brain stained with ARG24098 anti-CD273 / PD-L2 antibody at 1:250 dilution. Antigen Retrieval: Heat mediated was performed using citrate buffer (pH 6.0).



ARG24098 anti-CD273 / PD-L2 antibody ICC/IF image

Immunofluorescence: Mouse brain were fixed with 4% PFA were stained with ARG24098 anti-CD273 / PD-L2 antibody at 1:500 dilution, overnight at 4°C.

ARG24098 anti-CD273 / PD-L2 antibody WB image

Western blot: HeLa cell lysates stained with ARG24098 anti-CD273 / PD-L2 antibody.

