

ARG24007 anti-Collagen I antibody

Package: 50 µl
Store at: -20°C

Summary

| | |
|---------------------|--|
| Product Description | Rabbit Polyclonal antibody recognizes Collagen I |
| Tested Reactivity | Chk |
| Tested Application | ELISA, ICC/IF, IHC-P |
| Host | Rabbit |
| Clonality | Polyclonal |
| Isotype | IgG |
| Target Name | Collagen I |
| Species | Chicken |
| Immunogen | Type I collagen extracted from Chicken skin. |
| Conjugation | Un-conjugated |
| Alternate Names | OI1; OI2; OI3; OI4; EDSC; Collagen alpha-1(I) chain; Alpha-1 type I collagen |

Application Instructions

| Application table | Application | Dilution |
|-------------------|--|----------|
| | ELISA | 1:2000 |
| | ICC/IF | 1:40 |
| | IHC-P | 1:500 |
| Application Note | * The dilutions indicate recommended starting dilutions and the optimal dilutions or concentrations should be determined by the scientist. | |

Properties

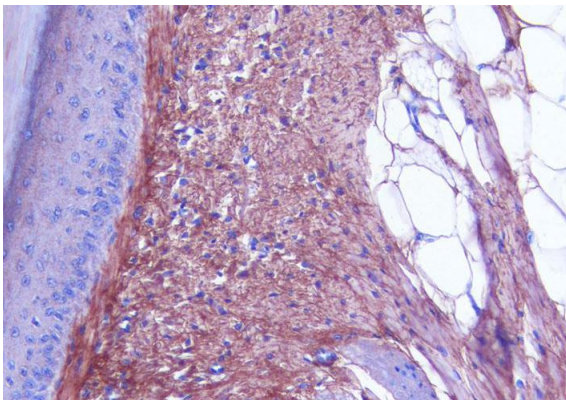
| | |
|---------------------|---|
| Form | Liquid |
| Purification | Purified. |
| Storage instruction | For continuous use, store undiluted antibody at 2-8°C for up to a week. For long-term storage, aliquot and store at -20°C. Storage in frost free freezers is not recommended. Avoid repeated freeze/thaw cycles. Suggest spin the vial prior to opening. The antibody solution should be gently mixed before use. |
| Note | For laboratory research only, not for drug, diagnostic or other use. |

Bioinformation

| | |
|----------------|---------------------------|
| Gene Symbol | COL1A1 |
| Gene Full Name | collagen, type I, alpha 1 |

| | |
|-----------------------|--|
| Background | This gene encodes the pro-alpha1 chains of type I collagen whose triple helix comprises two alpha1 chains and one alpha2 chain. Type I is a fibril-forming collagen found in most connective tissues and is abundant in bone, cornea, dermis and tendon. Mutations in this gene are associated with osteogenesis imperfecta types I-IV, Ehlers-Danlos syndrome type VIIA, Ehlers-Danlos syndrome Classical type, Caffey Disease and idiopathic osteoporosis. Reciprocal translocations between chromosomes 17 and 22, where this gene and the gene for platelet-derived growth factor beta are located, are associated with a particular type of skin tumor called dermatofibrosarcoma protuberans, resulting from unregulated expression of the growth factor. Two transcripts, resulting from the use of alternate polyadenylation signals, have been identified for this gene. [provided by R. Dalgleish, Feb 2008] |
| Function | Type I collagen is a member of group I collagen (fibrillar forming collagen). [UniProt] |
| Highlight | Related products: Collagen I antibodies ; Collagen I ELISA Kits ; Collagen I Duos / Panels ; Anti-Rabbit IgG secondary antibodies ; Related news: New antibody panels for Myofibroblasts and CAFs |
| Calculated Mw | 139 kDa |
| PTM | Proline residues at the third position of the tripeptide repeating unit (G-X-P) are hydroxylated in some or all of the chains. Proline residues at the second position of the tripeptide repeating unit (G-P-X) are hydroxylated in some of the chains. O-linked glycan consists of a Glc-Gal disaccharide bound to the oxygen atom of a post-translationally added hydroxyl group. [UniProt] |
| Cellular Localization | Secreted, extracellular space, extracellular matrix. [UniProt] |

Images



ARG24007 anti-Collagen I antibody IHC-P image

Immunohistochemistry: Paraffin-embedded Chicken skin tissue stained with ARG24007 anti-Collagen I antibody.