

ARG23876 anti-CD192 / CCR2 antibody

Package: 50 µg
Store at: -20°C

Summary

Product Description	Goat Polyclonal antibody recognizes CD192 / CCR2 antibody
Tested Reactivity	Hu
Tested Application	ELISA, IHC-P, WB
Host	Goat
Clonality	Polyclonal
Isotype	IgG
Target Name	CD192 / CCR2
Species	Human
Immunogen	Synthetic peptide corresponding to aa. 17-39 of Human CD192 / CCR2. (C-GEEVTTFFDYDYGAPCHKFDVKQ)
Conjugation	Un-conjugated
Alternate Names	CCR2B; CD192; CKR2; Monocyte chemoattractant protein 1 receptor; CCR-2; CKR2B; CKR2A; CMKBR2; CCR2; C-C CKR-2; CC-CKR-2; CD antigen CD192; MCP-1-R; CCR2A; C-C chemokine receptor type 2

Application Instructions

Application table	Application	Dilution
	ELISA	1:30000
	IHC-P	1:100
	WB	1:500
Application Note	* The dilutions indicate recommended starting dilutions and the optimal dilutions or concentrations should be determined by the scientist.	
Positive Control	Spleen tissue.	

Properties

Form	Liquid
Purification	Affinity purification with immunogen.
Buffer	PBS, 0.1% Sodium azide and 0.1% BSA.
Preservative	0.1% Sodium azide
Stabilizer	0.1% BSA
Concentration	1 mg/ml
Storage instruction	For continuous use, store undiluted antibody at 2-8°C for up to a week. For long-term storage, aliquot and store at -20°C or below. Storage in frost free freezers is not recommended. Avoid repeated freeze/thaw cycles. Suggest spin the vial prior to opening. The antibody solution should be gently mixed

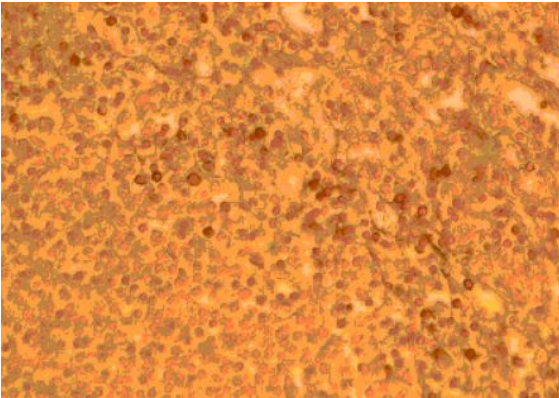
before use.

Note For laboratory research only, not for drug, diagnostic or other use.

Bioinformation

Gene Symbol	CCR2
Gene Full Name	chemokine (C-C motif) receptor 2
Background	This gene encodes two isoforms of a receptor for monocyte chemoattractant protein-1, a chemokine which specifically mediates monocyte chemotaxis. Monocyte chemoattractant protein-1 is involved in monocyte infiltration in inflammatory diseases such as rheumatoid arthritis as well as in the inflammatory response against tumors. The receptors encoded by this gene mediate agonist-dependent calcium mobilization and inhibition of adenylyl cyclase. This gene is located in the chemokine receptor gene cluster region. Two alternatively spliced transcript variants are expressed by the gene. [provided by RefSeq, Mar 2009]
Function	Receptor for the CCL2, CCL7 and CCL13 chemokines. Transduces a signal by increasing intracellular calcium ion levels. Alternative coreceptor with CD4 for HIV-1 infection. [UniProt]
Calculated Mw	42 kDa
PTM	N-glycosylated. Sulfation increases the affinity for both monomeric and dimeric CCL2 with stronger binding to the monomeric form. Binding of sulfated CCR2 to CCL2 promotes conversion of CCL2 from dimer to monomer. [UniProt]
Cellular Localization	Cell membrane; Multi-pass membrane protein. Note=The chemoattractant receptors are distributed throughout the cell surface; after stimulation with a ligand, such as CCL2, they are rapidly recruited into microdomain clusters at the cell membrane. [UniProt]

Images



ARG23876 anti-CD192 / CCR2 antibody IHC-P image

Immunohistochemistry: Paraffin-embedded Human spleen stained with ARG23876 anti-CD192 / CCR2 antibody.