

## ARG23818 Goat anti-Rat Ig antibody (Biotin), pre-adsorbed

Package: 500 µg  
Store at: 4°C

### Summary

Product Description	Biotin-conjugated Goat Polyclonal antibody recognizes Rat Ig
Tested Reactivity	Rat
Tested Application	ELISA, FACS, FLISA, ICC/IF, IHC-Fr, WB
Specificity	Reacts with the heavy and light chains of rat IgM and IgG as demonstrated by ELISA, FLISA, and/or flow cytometry. Minimal cross reactivity with mouse immunoglobulins. May react with other species.
Host	Goat
Clonality	Polyclonal
Isotype	IgG
Target Name	Ig
Species	Rat
Conjugation	Biotin

### Application Instructions

Pre Adsorbed	Mouse immunoglobulins and pooled sera.														
Application table	<table><thead><tr><th>Application</th><th>Dilution</th></tr></thead><tbody><tr><td>ELISA</td><td>1:5000 - 1:20000</td></tr><tr><td>FACS</td><td>&lt; 1 µg/10<sup>6</sup> cells</td></tr><tr><td>FLISA</td><td>Assay-dependent</td></tr><tr><td>ICC/IF</td><td>Assay-dependent</td></tr><tr><td>IHC-Fr</td><td>Assay-dependent</td></tr><tr><td>WB</td><td>Assay-dependent</td></tr></tbody></table>	Application	Dilution	ELISA	1:5000 - 1:20000	FACS	< 1 µg/10 <sup>6</sup> cells	FLISA	Assay-dependent	ICC/IF	Assay-dependent	IHC-Fr	Assay-dependent	WB	Assay-dependent
Application	Dilution														
ELISA	1:5000 - 1:20000														
FACS	< 1 µg/10 <sup>6</sup> cells														
FLISA	Assay-dependent														
ICC/IF	Assay-dependent														
IHC-Fr	Assay-dependent														
WB	Assay-dependent														
Application Note	* The dilutions indicate recommended starting dilutions and the optimal dilutions or concentrations should be determined by the scientist.														

### Properties

Form	Liquid
Purification	Affinity purification with immunogen.
Buffer	PBS and 0.1% Sodium azide.
Preservative	0.1% Sodium azide
Concentration	0.5 mg/ml
Storage instruction	Aliquot and store in the dark at 2-8°C. Keep protected from prolonged exposure to light. Avoid repeated freeze/thaw cycles. Suggest spin the vial prior to opening. The antibody solution should be

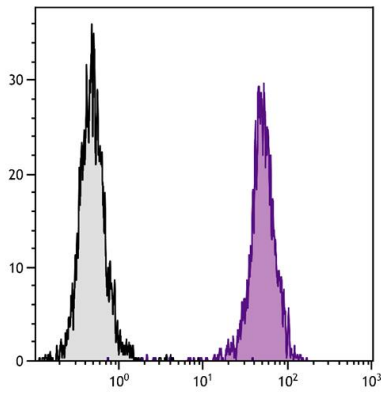
gently mixed before use.

Note

For laboratory research only, not for drug, diagnostic or other use.

Images

---



ARG23818 Goat anti-Rat Ig antibody (Biotin), pre-adsorbed FACS image

Flow Cytometry: BALB/c Mouse splenocytes were stained with ARG20565 anti-CD45 antibody [I3/2.3] followed by ARG23818 Goat anti-Rat Ig antibody (Biotin), pre-adsorbed followed by Streptavidin-FITC.