

ARG23744 anti-Prolactin antibody [INN-hPRL-1]

Package: 250 µg
Store at: -20°C

Summary

Product Description	Mouse Monoclonal antibody [INN-hPRL-1] recognizes Prolactin
Tested Reactivity	Hu
Tested Application	ELISA, IHC-Fr, IHC-P, RIA
Host	Mouse
Clonality	Monoclonal
Clone	INN-hPRL-1
Isotype	IgG1
Target Name	Prolactin
Species	Human
Immunogen	Human Prolactin.
Conjugation	Un-conjugated
Alternate Names	Prolactin; PRL

Application Instructions

Application table	Application	Dilution
	ELISA	1:20 - 1:200
	IHC-Fr	1:500 - 1:1000
	IHC-P	1:500 - 1:1000
	RIA	Assay-dependent
Application Note	IHC-P: Antigen Retrieval: Heat mediated was performed using EDTA buffer (pH 8.0). * The dilutions indicate recommended starting dilutions and the optimal dilutions or concentrations should be determined by the scientist.	
Positive Control	Human Pituitary.	

Properties

Form	Liquid
Purification	Purified.
Buffer	PBS and 0.09% Sodium azide.
Preservative	0.09% Sodium azide
Concentration	1 mg/ml
Storage instruction	For continuous use, store undiluted antibody at 2-8°C for up to a week. For long-term storage, aliquot and store at -20°C or below. Storage in frost free freezers is not recommended. Avoid repeated

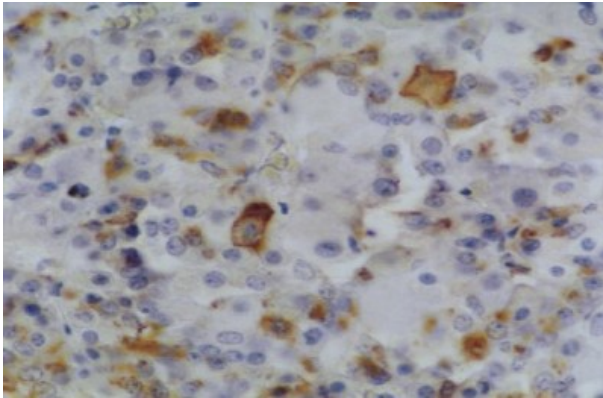
freeze/thaw cycles. Suggest spin the vial prior to opening. The antibody solution should be gently mixed before use.

Note For laboratory research only, not for drug, diagnostic or other use.

Bioinformation

Gene Symbol	PRL
Gene Full Name	prolactin
Background	This gene encodes the anterior pituitary hormone prolactin. This secreted hormone is a growth regulator for many tissues, including cells of the immune system. It may also play a role in cell survival by suppressing apoptosis, and it is essential for lactation. Alternative splicing results in multiple transcript variants that encode the same protein. [provided by RefSeq, Aug 2011]
Function	Prolactin acts primarily on the mammary gland by promoting lactation. [UniProt]
Calculated Mw	26 kDa

Images



ARG23744 anti-Prolactin antibody [INN-hPRL-1] IHC-P image

Immunohistochemistry: Formalin-fixed and paraffin-embedded Human pituitary stained with ARG23744 anti-Prolactin antibody [INN-hPRL-1]. Antigen Retrieval: Heat mediated was performed using EDTA buffer (pH 8.0).