

ARG23728 anti-Methylated Lysine antibody

Package: 50 µg
Store at: -20°C

Summary

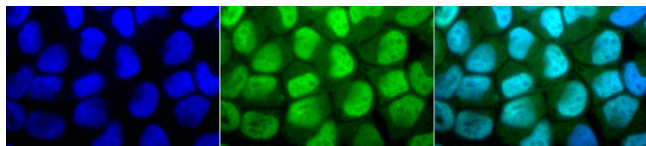
Product Description	Rabbit Polyclonal antibody recognizes Methylated Lysine
Tested Reactivity	Other
Tested Application	ICC/IF, WB
Specificity	The antibody detects proteins containing methylated lysine residues.
Host	Rabbit
Clonality	Polyclonal
Isotype	IgG
Target Name	Lysine
Species	Others
Immunogen	Methylated Lysine (KLH conjugated)
Conjugation	Un-conjugated

Application Instructions

Application table	Application	Dilution
	ICC/IF	1:200
	WB	1:1000
Application Note	* The dilutions indicate recommended starting dilutions and the optimal dilutions or concentrations should be determined by the scientist.	

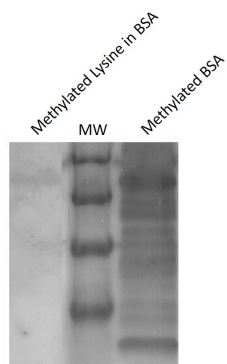
Properties

Form	Liquid
Purification	Purification with Protein A.
Buffer	PBS and 50% Glycerol.
Stabilizer	50% Glycerol
Concentration	1 mg/ml
Storage instruction	For continuous use, store undiluted antibody at 2-8°C for up to a week. For long-term storage, aliquot and store at -20°C. Storage in frost free freezers is not recommended. Avoid repeated freeze/thaw cycles. Suggest spin the vial prior to opening. The antibody solution should be gently mixed before use.
Note	For laboratory research only, not for drug, diagnostic or other use.



ARG23728 anti-Lysine Methylated antibody ICC/IF image

Immunofluorescence: HeLa cells fixed with 2% Formaldehyde (20 min at RT). Cells were stained with ARG23728 anti-Lysine Methylated antibody at 1:50 for 12 hours at 4°C. Magnification: 100x. DAPI (blue) nuclear stain (left). Primary antibodies (middle). Composite (right).



ARG23728 anti-Methylated Lysine antibody WB image

Western blot: Methylated Lysine in BSA (Left) and Methylated BSA (Right). The blots were stained with ARG23728 anti-Methylated Lysine antibody at 1:1000 dilution.
