

ARG23723 anti-VMP1 / TMEM49 antibody

Package: 50 µg
Store at: -20°C

Summary

Product Description	Rabbit Polyclonal antibody recognizes VMP1 / TMEM49
Tested Reactivity	Hu
Tested Application	ICC/IF
Host	Rabbit
Clonality	Polyclonal
Isotype	IgG
Target Name	VMP1 / TMEM49
Species	Human
Immunogen	Synthetic peptide around aa. 391-402 of Human VMP1 / TMEM49.
Conjugation	Un-conjugated
Alternate Names	Vacuole membrane protein 1; EPG3; TANGO5; TMEM49; Transmembrane protein 49

Application Instructions

Application table	Application	Dilution
	ICC/IF	1:100

Application Note * The dilutions indicate recommended starting dilutions and the optimal dilutions or concentrations should be determined by the scientist.

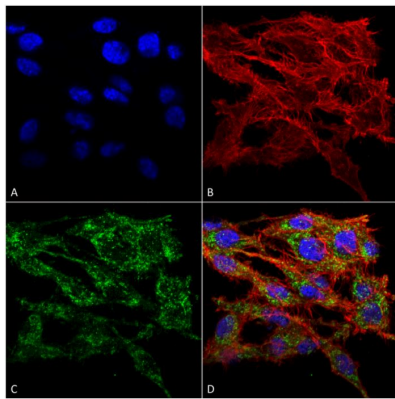
Properties

Form	Liquid
Purification	Affinity purification with immunogen.
Buffer	PBS, 0.09% Sodium azide and 50% Glycerol.
Preservative	0.09% Sodium azide
Stabilizer	50% Glycerol
Concentration	1 mg/ml
Storage instruction	For continuous use, store undiluted antibody at 2-8°C for up to a week. For long-term storage, aliquot and store at -20°C. Storage in frost free freezers is not recommended. Avoid repeated freeze/thaw cycles. Suggest spin the vial prior to opening. The antibody solution should be gently mixed before use.
Note	For laboratory research only, not for drug, diagnostic or other use.

Bioinformation

Gene Symbol	VMP1
Gene Full Name	vacuole membrane protein 1
Function	Stress-induced protein that, when overexpressed, promotes formation of intracellular vacuoles followed by cell death. May be involved in the cytoplasmic vacuolization of acinar cells during the early stage of acute pancreatitis. Plays a role in the initial stages of the autophagic process through its interaction with BECN1 (By similarity). Involved in cell-cell adhesion. Plays an essential role in formation of cell junctions. [UniProt]
Calculated Mw	46 kDa
Cellular Localization	Cell membrane, Endoplasmic Reticulum, Endoplasmic Reticulum-Golgi Intermediate Compartment Membrane, Multi-Pass Membrane Protein, Vacuole Membrane. [UniProt]

Images



ARG23723 anti-VMP1 / TMEM49 antibody ICC/IF image

Immunofluorescence: Colon carcinoma cell line (RKO) fixed with 4% Formaldehyde for 15 min at RT. Cells were stained with ARG23723 anti-VMP1 / TMEM49 antibody at 1:100 for 60 min at RT. Magnification: 60X. (A) DAPI nuclear stain. (B) Phalloidin Texas Red F-Actin stain. (C) Primary antibodies. (D) Composite.