

## ARG23720 anti-AMBRA1 antibody

Package: 50 µg  
Store at: -20°C

### Summary

Product Description	Rabbit Polyclonal antibody recognizes AMBRA1
Tested Reactivity	Hu
Tested Application	ICC/IF
Host	Rabbit
Clonality	Polyclonal
Isotype	IgG
Target Name	AMBRA1
Species	Human
Immunogen	Synthetic peptide around aa. 202-212 of Human AMBRA1.
Conjugation	Un-conjugated
Alternate Names	DCAF3; Activating molecule in BECN1-regulated autophagy protein 1; WDR94

### Application Instructions

Application table	Application	Dilution
	ICC/IF	1:100

**Application Note** \* The dilutions indicate recommended starting dilutions and the optimal dilutions or concentrations should be determined by the scientist.

### Properties

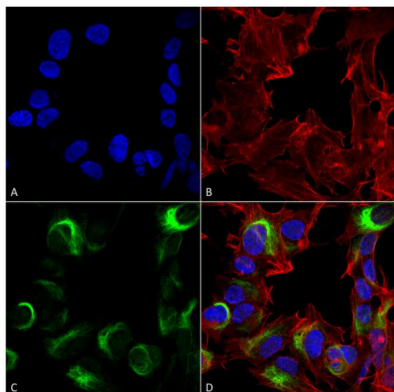
Form	Liquid
Purification	Affinity purification with immunogen.
Buffer	PBS, 0.09% Sodium azide and 50% Glycerol.
Preservative	0.09% Sodium azide
Stabilizer	50% Glycerol
Concentration	1 mg/ml
Storage instruction	For continuous use, store undiluted antibody at 2-8°C for up to a week. For long-term storage, aliquot and store at -20°C. Storage in frost free freezers is not recommended. Avoid repeated freeze/thaw cycles. Suggest spin the vial prior to opening. The antibody solution should be gently mixed before use.
Note	For laboratory research only, not for drug, diagnostic or other use.

### Bioinformation

Gene Symbol	AMBRA1
Gene Full Name	autophagy/beclin-1 regulator 1
Function	Regulates autophagy and development of the nervous system. Involved in autophagy in controlling protein turnover during neuronal development, and in regulating normal cell survival and proliferation (By similarity). [UniProt]
Calculated Mw	143 kDa
Cellular Localization	Autophagosome. Note: Localizes also to discrete punctae along the ciliary axoneme. [UniProt]

## Images

---



### ARG23720 anti-AMBRA1 antibody ICC/IF image

Immunofluorescence: SK-N-BE cells fixed with 4% Formaldehyde for 15 min at RT. Cells were stained with ARG23720 anti-AMBRA1 antibody at 1:100 for 60 min at RT. Magnification: 60X. (A) DAPI (blue) nuclear stain. (B) Phalloidin Texas Red F-Actin stain. (C) Primary antibodies. (D) Composite.