

## ARG23705 Goat anti-Mouse IgG2a antibody (HRP), pre-adsorbed

Package: 500 µl  
Store at: 4°C

### Summary

Product Description	HRP-conjugated Goat Polyclonal antibody recognizes Mouse IgG2a
Tested Reactivity	Ms
Species Does Not React With	Hu
Tested Application	ELISA, ELISPOT, FACS, FLISA, ICC/IF, IHC-Fr, IHC-P, Puri, WB
Specificity	Reacts with the heavy chain of mouse IgG2a as demonstrated by ELISA, FLISA, and/or flow cytometry. Minimal cross reactivity with human immunoglobulins. May react with immunoglobulins from other species.
Host	Goat
Clonality	Polyclonal
Isotype	IgG
Target Name	IgG2a
Species	Mouse
Immunogen	IgG2a
Conjugation	HRP

### Application Instructions

**Pre Adsorbed** Mouse IgM, IgG1, IgG2b, IgG3 and IgA; Pooled human sera; Purified human paraproteins.

#### Application table

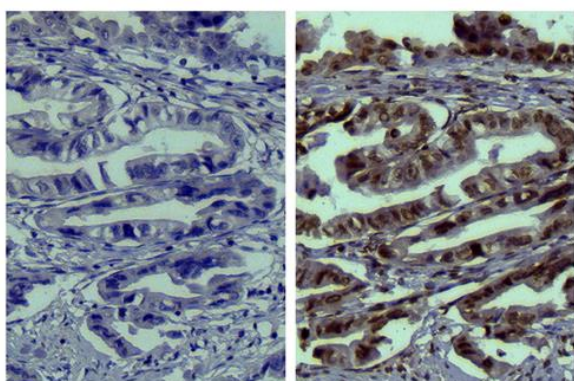
Application	Dilution
ELISA	1:4000 - 1:8000
ELISPOT	Assay-dependent
FACS	Assay-dependent
FLISA	Assay-dependent
ICC/IF	Assay-dependent
IHC-Fr	Assay-dependent
IHC-P	Assay-dependent
Puri	Assay-dependent
WB	Assay-dependent

**Application Note** \* The dilutions indicate recommended starting dilutions and the optimal dilutions or concentrations should be determined by the scientist.

### Properties

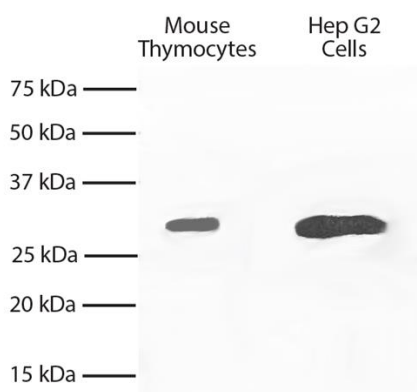
Form	Liquid
Purification	Affinity purification with immunogen.
Buffer	PBS (pH 7.4) and 50% Glycerol.
Stabilizer	50% Glycerol
Storage instruction	Aliquot and store in the dark at 2-8°C. Keep protected from prolonged exposure to light. Avoid repeated freeze/thaw cycles. Suggest spin the vial prior to opening. The antibody solution should be gently mixed before use.
Note	For laboratory research only, not for drug, diagnostic or other use.

## Images



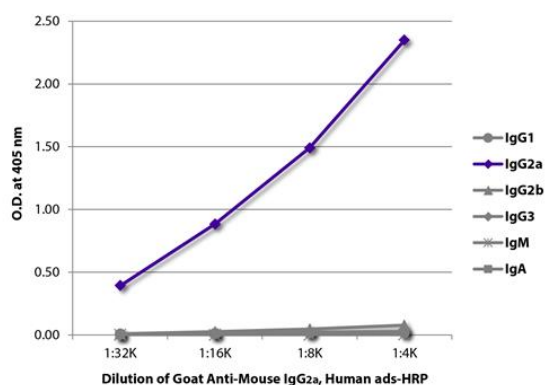
ARG23705 Goat anti-Mouse IgG2a antibody (HRP) (pre-adsorbed)  
IHC-P image

Immunohistochemistry: Paraffin-embedded Human gastric cancer tissue stained with [ARG21961](#) Mouse IgG2a Isotype Control antibody [HOPC-1] (left) and [ARG22191](#) anti-MMP9 antibody [SB15c] (right), followed by ARG23705 Goat anti-Mouse IgG2a antibody (HRP) (pre-adsorbed), DAB and hematoxylin.



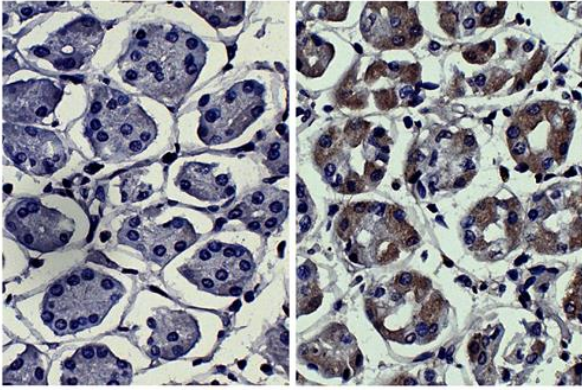
ARG23705 Goat anti-Mouse IgG2a antibody (HRP) (pre-adsorbed)  
WB image

Western blot: Mouse thymocytes and HepG2 cell lysates stained with [ARG22305](#) anti-Bcl XL antibody [2H12]. Secondary antibody: ARG23705 Goat anti-Mouse IgG2a antibody (HRP) (pre-adsorbed).



ARG23705 Goat anti-Mouse IgG2a antibody (HRP) (pre-adsorbed)  
ELISA image

ELISA: The plate was coated with purified Mouse IgG1, IgG2a, IgG2b, IgG3, IgM, and IgA. Immunoglobulins were detected with serially diluted ARG23705 Goat anti-Mouse IgG2a antibody (HRP) (pre-adsorbed).



ARG23705 Goat anti-Mouse IgG2a antibody (HRP) (pre-adsorbed)  
IHC-P image

Immunohistochemistry: Paraffin-embedded Human kidney cancer tissue stained with [ARG21961](#) Mouse IgG2a Isotype Control antibody [HOPC-1] (left) and anti-MMP3 antibody (right) followed by ARG23705 Goat anti-Mouse IgG2a antibody (HRP) (pre-adsorbed), DAB and hematoxylin.