

ARG23673 anti-CD16-Like antibody [VPM64]

Package: 50 µg

Store at: -20°C

Summary

Product Description	Mouse Monoclonal antibody [VPM64] recognizes CD16-Like. This product recognizes a cell surface antigen of 65-80kDa which is similar to the human cell surface antigen designated as CD16. It has therefore been hypothesized that clone VPM64 may recognize the ovine homologue of human CD16 (Hopkins, J. et. al. 1996). Clone VPM64 recognizes an antigen that is strongly expressed by ovine alveolar macrophages and peripheral blood granulocytes, and more weakly by monocytes and other tissue macrophages.
Tested Reactivity	Sheep
Tested Application	ELISA, FACS, IHC-Fr, IP
Host	Mouse
Clonality	Monoclonal
Clone	VPM64
Isotype	IgG1
Target Name	CD16-Like
Species	Sheep
Immunogen	Ovine macrophages.
Conjugation	Un-conjugated

Application Instructions

Application table	Application	Dilution
	ELISA	1:500
	FACS	1:25 - 1:200
	IHC-Fr	Neat
	IP	Neat

Application Note FACS: Use 10 µl of the suggested working dilution to label 10⁶ cells in 100 µl.
* The dilutions indicate recommended starting dilutions and the optimal dilutions or concentrations should be determined by the scientist.

Properties

Form	Liquid
Purification	Purification with Protein A.
Buffer	PBS and 0.09% Sodium azide.
Preservative	0.09% Sodium azide
Concentration	1 mg/ml

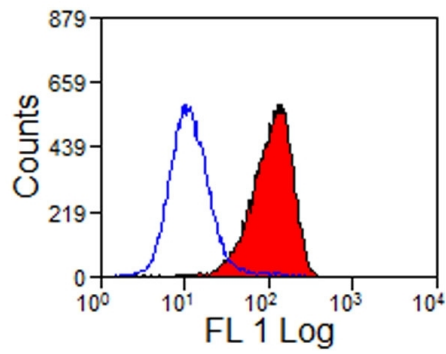
Storage instruction

For continuous use, store undiluted antibody at 2-8°C for up to a week. For long-term storage, aliquot and store at -20°C or below. Storage in frost free freezers is not recommended. Avoid repeated freeze/thaw cycles. Suggest spin the vial prior to opening. The antibody solution should be gently mixed before use.

Note

For laboratory research only, not for drug, diagnostic or other use.

Images



ARG23673 anti-CD16-Like antibody [VPM64] FACS image

Flow Cytometry: Sheep alveolar macrophages stained with ARG23673 anti-CD16-Like antibody [VPM64] followed by Goat anti-Mouse IgG (FITC).