

ARG23574 anti-CD32-Like antibody [VPM63]

Package: 50 µg
Store at: -20°C

Summary

Product Description	Mouse Monoclonal antibody [VPM63] recognizes CD32-Like. Mouse anti Sheep CD32-Like, clone VPM63 recognizes a cell surface antigen of 40-42 kDa which is similar to the human cell surface antigen designated as CD32. It has therefore been hypothesized that clone VPM63 may recognise a minor isoform of the ovine homologue of human CD32 (Hopkins et. al. 1996).CD32 is one of a group of Fc receptors belonging to the immunoglobulin superfamily and involved in phagocytosis of opsonized microbes. CD32, also known as the Fc gamma RII, acts as a low affinity receptor for IgG. The antigen mediates several functions including endocytosis, activation of secretion, cytotoxicity and immunomodulation.Mouse anti Sheep CD32-Like, clone VPM63 has been shown to recognize an antigen expressed by macrophages and monocytes but not by lymphocytes and shows strong staining of alveolar macrophages in flow cytometry.In addition to clone VPM63, clone CCG36, an antibody directed against bovine CD32 but cross reacting with ovine CD32 is also available. Clone CCG36 is available in both unconjugated and conjugated formats.
Tested Reactivity	Sheep
Tested Application	FACS, IHC-Fr
Host	Mouse
Clonality	Monoclonal
Clone	VPM63
Isotype	IgG1
Target Name	CD32-Like
Species	Sheep
Immunogen	Ovine macrophages.
Conjugation	Un-conjugated

Application Instructions

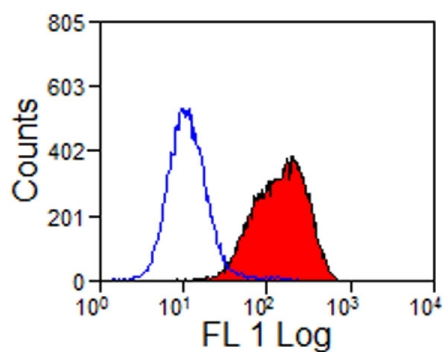
Application table	Application	Dilution
	FACS	1:25 - 1:200
	IHC-Fr	Assay-dependent
Application Note	FACS: Use 10 µl of the suggested working dilution to label 10 ⁶ cells in 100 µl * The dilutions indicate recommended starting dilutions and the optimal dilutions or concentrations should be determined by the scientist.	

Properties

Form	Liquid
Purification	Purification with Protein A.
Buffer	PBS and 0.09% Sodium azide.
Preservative	0.09% Sodium azide

Concentration	1 mg/ml
Storage instruction	For continuous use, store undiluted antibody at 2-8°C for up to a week. For long-term storage, aliquot and store at -20°C or below. Storage in frost free freezers is not recommended. Avoid repeated freeze/thaw cycles. Suggest spin the vial prior to opening. The antibody solution should be gently mixed before use.
Note	For laboratory research only, not for drug, diagnostic or other use.

Images



ARG23574 anti-CD32-Like antibody [VPM63] FACS image

Flow Cytometry: Sheep alveolar macrophages stained with ARG23574 anti-CD32-Like antibody [VPM63] followed by Goat anti-Mouse IgG (FITC).