

ARG23469 anti-CD300a + CD300c antibody [P192]

Package: 100 µg
Store at: -20°C

Summary

Product Description	Mouse Monoclonal antibody [P192] recognizes CD300a + CD300c Mouse anti Human CD300a antibody, clone P192 specifically recognizes human CD300a, otherwise known as IRp60 (inhibitory receptor protein 60), a 60kDa transmembrane glycoprotein expressed by natural killer cells (NK), T and B cell subsets, monocytes, neutrophils, macrophages, granulocytes, dendritic cells (DC) and mast cells. Studies have shown that the cross-linking of CD300a on NK results in a down-regulation of their cytolytic activity, whilst cross-linking of CD300a on mast cells, inhibits IgE-induced degranulation and SCF-mediated survival. Furthermore, cross-linking of CD300a on the surface of eosinophils has been shown to significantly inhibit their survival, chemotaxis and activation in response to certain inflammatory cytokines, whilst eosinophil-derived MBP (major basic protein) and EDN (neurotoxin), can down-regulate CD300a expression on mast cells in vitro.
Tested Reactivity	Hu
Tested Application	FACS
Host	Mouse
Clonality	Monoclonal
Clone	P192
Isotype	IgG2a
Target Name	CD300a + CD300c
Species	Human
Immunogen	Polyclonal population of NK cells
Conjugation	Un-conjugated
Alternate Names	CMRF-35-H9; Inhibitory receptor protein 60; NK inhibitory receptor; CMRF35-H; CMRF35H9; CD antigen CD300a; IRC1/IRC2; IGSF12; CMRF35H; IRp60; IgSF12; CMRF35-like molecule 8; CMRF35-H9; CMRF-35H; CD300 antigen-like family member A; CLM-8; IRC1; IRC2; Immunoglobulin superfamily member 12

Application Instructions

Application table	<table><thead><tr><th>Application</th><th>Dilution</th></tr></thead><tbody><tr><td>FACS</td><td>1:25 - 1:200</td></tr></tbody></table>	Application	Dilution	FACS	1:25 - 1:200
Application	Dilution				
FACS	1:25 - 1:200				
Application Note	FACS: Use 10 µl of the suggested working dilution to label 10 ⁶ cells in 100 µl. * The dilutions indicate recommended starting dilutions and the optimal dilutions or concentrations should be determined by the scientist.				

Properties

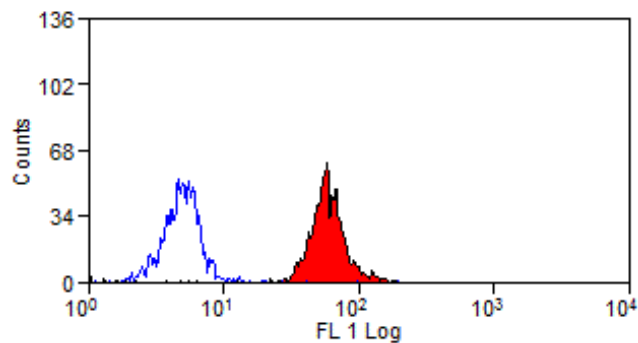
Form	Liquid
Purification	Purification with Protein G.
Buffer	PBS and 0.09% Sodium azide.

Preservative	0.09% Sodium azide
Concentration	1 mg/ml
Storage instruction	For continuous use, store undiluted antibody at 2-8°C for up to a week. For long-term storage, aliquot and store at -20°C or below. Storage in frost free freezers is not recommended. Avoid repeated freeze/thaw cycles. Suggest spin the vial prior to opening. The antibody solution should be gently mixed before use.
Note	For laboratory research only, not for drug, diagnostic or other use.

Bioinformation

Gene Symbol	CD300A
Gene Full Name	CD300a molecule
Background	This gene encodes a member of the CD300 glycoprotein family of cell surface proteins found on leukocytes involved in immune response signaling pathways. This gene is located on chromosome 17 in a cluster with all but one of the other family members. Multiple transcript variants encoding different isoforms have been found for this gene. [provided by RefSeq, Feb 2012]
Function	Inhibitory receptor which may contribute to the down-regulation of cytolytic activity in natural killer (NK) cells, and to the down-regulation of mast cell degranulation. [UniProt]
Calculated Mw	33 kDa
PTM	Phosphorylated on tyrosine. N-glycosylated. [UniProt]

Images



ARG23469 anti-CD300a + CD300c antibody [P192] FACS image

Flow Cytometry: Human peripheral blood monocytes stained with ARG23469 anti-CD300a + CD300c antibody [P192] followed by Rabbit F(ab')₂ anti Mouse IgG (FITC).