

ARG23418 anti-CD21 antibody [CC21]

Package: 50 µg

Store at: -20°C

Summary

Product Description	Mouse Monoclonal antibody [CC21] recognizes CD21 Mouse anti Bovine CD21 monoclonal antibody, clone CC21 recognizes the bovine CD21 cell surface antigen, a ~145 kDa single pass type I membrane glycoprotein containing multiple sushi domains. CD21 is also known as complement receptor type 2. In cattle CD21 expression is restricted to B lymphocytes (Naessens et al. 1990). CD21 may be expressed on B cells as either a long or a short form (Pringle et al. 2012) Mouse anti bovine CD21, clone CC21 has been used to demonstrate the co-expression of CD21 with PrPc on B cells of scrapie infected sheep (Halliday et al. 2005).
Tested Reactivity	Bov, Deer, Goat, Sheep
Tested Application	FACS, ICC/IF, IHC-Fr, IP
Host	Mouse
Clonality	Monoclonal
Clone	CC21
Isotype	IgG1
Target Name	CD21
Species	Bovine
Conjugation	Un-conjugated
Alternate Names	Cr2; Complement C3d receptor; C3DR; CD21; CD antigen CD21; Complement receptor type 2; SLEB9; CR; CVID7; Epstein-Barr virus receptor; EBV receptor

Application Instructions

Application table	Application	Dilution
	FACS	Neat - 1:10
	ICC/IF	Assay-dependent
	IHC-Fr	Assay-dependent
	IP	Assay-dependent
Application Note	FACS: Use 10 µl of the suggested working dilution to label 10 ⁶ cells in 100 µl. * The dilutions indicate recommended starting dilutions and the optimal dilutions or concentrations should be determined by the scientist.	

Properties

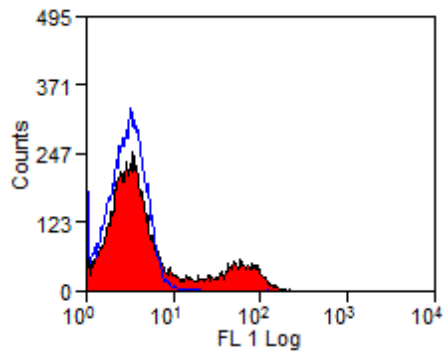
Form	Liquid
Purification	Purification with Protein A.
Buffer	PBS and 0.09% Sodium azide.
Preservative	0.09% Sodium azide

Concentration	1 mg/ml
Storage instruction	For continuous use, store undiluted antibody at 2-8°C for up to a week. For long-term storage, aliquot and store at -20°C or below. Storage in frost free freezers is not recommended. Avoid repeated freeze/thaw cycles. Suggest spin the vial prior to opening. The antibody solution should be gently mixed before use.
Note	For laboratory research only, not for drug, diagnostic or other use.

Bioinformation

Gene Symbol	CR2
Gene Full Name	complement component (3d/Epstein Barr virus) receptor 2
Background	This gene encodes a membrane protein, which functions as a receptor for Epstein-Barr virus (EBV) binding on B and T lymphocytes. Genetic variations in this gene are associated with susceptibility to systemic lupus erythematosus type 9 (SLEB9). Alternatively spliced transcript variants encoding different isoforms have been found for this gene.[provided by RefSeq, Sep 2009]
Function	Receptor for complement C3Dd, for the Epstein-Barr virus on human B-cells and T-cells and for HNRPU. Participates in B lymphocytes activation. [UniProt]
Calculated Mw	113 kDa

Images



ARG23418 anti-CD21 antibody [CC21] FACS image

Flow Cytometry: Bovine peripheral blood lymphocytes stained with ARG23418 anti-CD21 antibody [CC21].