

ARG23147 anti-HLA A2 antibody [BB7.2]

Package: 100 µg
Store at: -20°C

Summary

Product Description	Mouse Monoclonal antibody [BB7.2] recognizes HLA A2 Mouse anti Human HLA A2 antibody, clone BB7.2 recognizes the human HLA-A2 histocompatibility antigen. The epitope recognized by this antibody has been studied extensively and would appear to include the carboxy-terminus of the alpha-2 helix and a turn on one of the underlying beta strands. Mouse anti Human HLA A2 antibody, clone BB7.2 may be used for the flow cytometric detection of HLA-A2 expression and has also been used for immunoaffinity purification of HLA-A2 molecules. Functionally Mouse anti Human HLA A2 antibody, clone BB7.2 is reported to inhibit MHC restricted cellular cytotoxicity.
Tested Reactivity	Hu
Tested Application	FACS, IHC-Fr, IP
Host	Mouse
Clonality	Monoclonal
Clone	BB7.2
Isotype	IgG2b
Target Name	HLA A2
Species	Human
Immunogen	Papain solubilised HLA-A2.
Conjugation	Un-conjugated
Alternate Names	MHC class I antigen A*1; HLAA; HLA class I histocompatibility antigen, A-1 alpha chain

Application Instructions

Application table	Application	Dilution
	FACS	10 µg/ml
	IHC-Fr	Assay-dependent
	IP	Assay-dependent
Application Note	FACS: Use 10 µl of the suggested working dilution to label 10 ⁶ cells or 100 µl whole blood. * The dilutions indicate recommended starting dilutions and the optimal dilutions or concentrations should be determined by the scientist.	

Properties

Form	Liquid
Purification	Purification with Protein G.
Buffer	PBS and 0.09% Sodium azide.
Preservative	0.09% Sodium azide

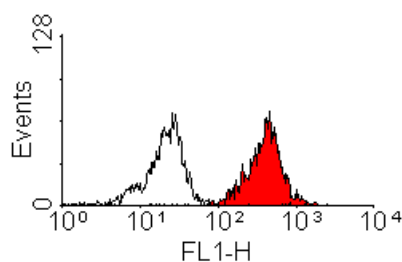
Concentration	1 mg/ml
Storage instruction	For continuous use, store undiluted antibody at 2-8°C for up to a week. For long-term storage, aliquot and store at -20°C or below. Storage in frost free freezers is not recommended. Avoid repeated freeze/thaw cycles. Suggest spin the vial prior to opening. The antibody solution should be gently mixed before use.
Note	For laboratory research only, not for drug, diagnostic or other use.

Bioinformation

Gene Symbol	HLA-A
Gene Full Name	major histocompatibility complex, class I, A
Background	HLA-A belongs to the HLA class I heavy chain paralogues. This class I molecule is a heterodimer consisting of a heavy chain and a light chain (beta-2 microglobulin). The heavy chain is anchored in the membrane. Class I molecules play a central role in the immune system by presenting peptides derived from the endoplasmic reticulum lumen. They are expressed in nearly all cells. The heavy chain is approximately 45 kDa and its gene contains 8 exons. Exon 1 encodes the leader peptide, exons 2 and 3 encode the alpha1 and alpha2 domains, which both bind the peptide, exon 4 encodes the alpha3 domain, exon 5 encodes the transmembrane region, and exons 6 and 7 encode the cytoplasmic tail. Polymorphisms within exon 2 and exon 3 are responsible for the peptide binding specificity of each class one molecule. Typing for these polymorphisms is routinely done for bone marrow and kidney transplantation. Hundreds of HLA-A alleles have been described. [provided by RefSeq, Jul 2008]
Function	Involved in the presentation of foreign antigens to the immune system. [UniProt]
Calculated Mw	40 kDa
PTM	Polyubiquitinated in a post ER compartment by interaction with human herpesvirus 8 MIR1 protein. This targets the protein for rapid degradation via the ubiquitin system (By similarity). [UniProt]

Images

ARG23147 anti-HLA A2 antibody [BB7.2] FACS image



Flow Cytometry: Human peripheral blood lymphocytes stained with ARG23147 anti-HLA A2 antibody [BB7.2].