

**ARG23049**  
anti-CD3 antibody [KT3]Package: 100 µg  
Store at: -20°C

### Summary

Product Description	Rat Monoclonal antibody [KT3] recognizes CD3 CD3 antibody, clone KT3 recognizes the mouse CD3 antigen expressed by mature T cells. Clone KT3 may be used to trigger proliferation and cytotoxicity of CD3 positive cells.
Tested Reactivity	Ms
Tested Application	FACS, IHC-Fr
Host	Rat
Clonality	Monoclonal
Clone	KT3
Isotype	IgG2a
Target Name	CD3
Species	Mouse
Immunogen	CBAT6 thymocytes.
Conjugation	Un-conjugated

### Application Instructions

Application table	Application	Dilution
	FACS	1:50 - 1:100
	IHC-Fr	Assay-dependent

**Application Note**

IHC-Fr: The epitope recognised by this antibody is reported to be sensitive to formaldehyde fixation and tissue processing. Arigo recommends the use of acetone fixation for frozen sections.

FACS: Use 10 µl of the suggested working dilution to label 10<sup>6</sup> cells in 100 µl.

\* The dilutions indicate recommended starting dilutions and the optimal dilutions or concentrations should be determined by the scientist.

### Properties

Form	Liquid
Purification	Purification with Protein G.
Buffer	PBS and 0.09% Sodium azide
Preservative	0.09% Sodium azide
Concentration	1 mg/ml
Storage instruction	For continuous use, store undiluted antibody at 2-8°C for up to a week. For long-term storage, aliquot and store at -20°C or below. Storage in frost free freezers is not recommended. Avoid repeated freeze/thaw cycles. Suggest spin the vial prior to opening. The antibody solution should be gently mixed before use.

Note

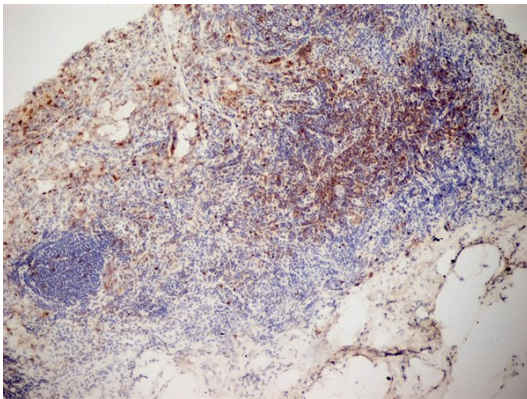
For laboratory research only, not for drug, diagnostic or other use.

## Bioinformation

---

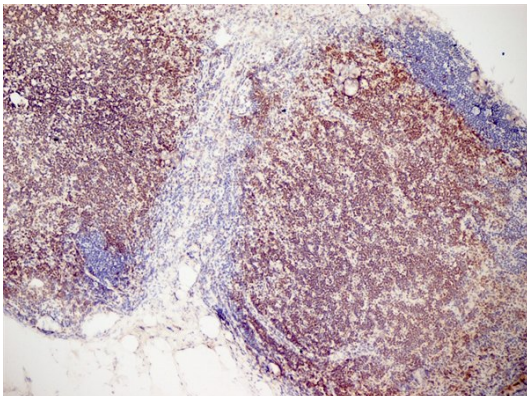
Gene Symbol	CD3D, CD3E, CD3G, CD247
Gene Full Name	CD3 Delta Subunit Of T-Cell Receptor Complex, CD3 Epsilon Subunit Of T-Cell Receptor Complex, CD3 Gamma Subunit Of T-Cell Receptor Complex, CD247 Molecule
Background	CD3 (cluster of differentiation 3) is a protein complex and T cell co-receptor that is involved in activating both the cytotoxic T cell (CD8+ naive T cells) and T helper cells (CD4+ naive T cells). It is composed of four distinct chains. In mammals, the complex contains a CD3 $\gamma$ chain, a CD3 $\delta$ chain, and two CD3 $\epsilon$ chains. These chains associate with the T-cell receptor (TCR) and the CD3-zeta ( $\zeta$ -chain) to generate an activation signal in T lymphocytes. The TCR, CD3-zeta, and the other CD3 molecules together constitute the TCR complex.
Highlight	Related products: <a href="#">CD3 antibodies</a> ; <a href="#">CD3 ELISA Kits</a> ; <a href="#">CD3 Duos / Panels</a> ; <a href="#">CD3 recombinant proteins</a> ; <a href="#">Anti-Rat IgG secondary antibodies</a> ; Related news: <a href="#">New antibody panels and duos for Tumor immune microenvironment Tumor-Infiltrating Lymphocytes (TILs)</a> <a href="#">Exploring Antiviral Immune Response</a>
Calculated Mw	20 kDa

## Images



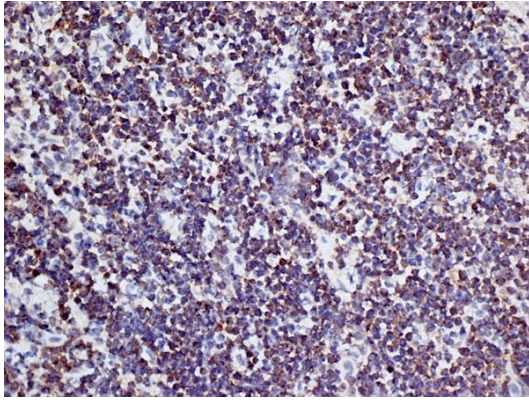
ARG23049 anti-CD3 antibody [KT3] IHC-Fr image

Immunohistochemistry: Mouse lymph node cryosection stained with ARG23049 anti-CD3 antibody [KT3] followed by HRP-conjugated Goat anti Rat IgG as a detection reagent. (Low power).



ARG23049 anti-CD3 antibody [KT3] IHC-Fr image

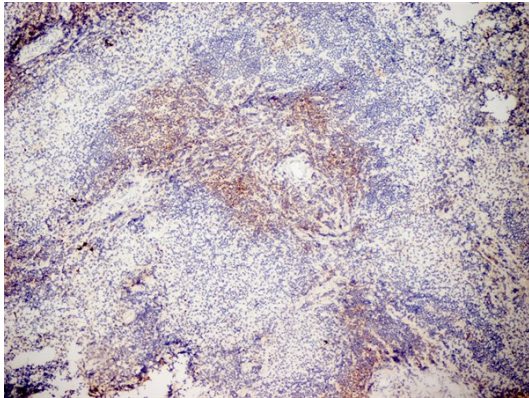
Immunohistochemistry: Mouse lymph node cryosection stained with ARG23049 anti-CD3 antibody [KT3] followed by HRP-conjugated Goat anti Rat IgG as a detection reagent. (Low power).



ARG23049 anti-CD3 antibody [KT3] IHC-Fr image

Immunohistochemistry: Mouse lymph node cryosection stained with ARG23049 anti-CD3 antibody [KT3] followed by HRP-conjugated Goat anti Rat IgG as a detection reagent. (High power).

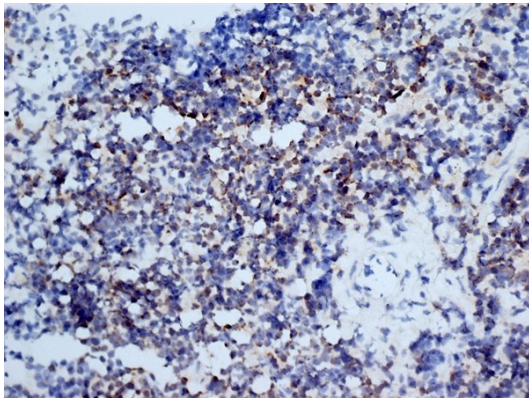
---



ARG23049 anti-CD3 antibody [KT3] IHC-Fr image

Immunohistochemistry: Mouse spleen cryosection stained with ARG23049 anti-CD3 antibody [KT3] followed by HRP-conjugated Goat anti Rat IgG as a detection reagent. (Low power).

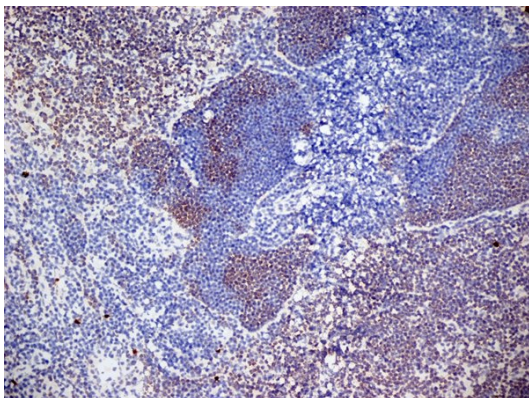
---



ARG23049 anti-CD3 antibody [KT3] IHC-Fr image

Immunohistochemistry: Mouse spleen cryosection stained with ARG23049 anti-CD3 antibody [KT3] followed by HRP-conjugated Goat anti Rat IgG as a detection reagent. (Medium power).

---



ARG23049 anti-CD3 antibody [KT3] IHC-Fr image

Immunohistochemistry: Mouse lymph node cryosection stained with ARG23049 anti-CD3 antibody [KT3] followed by HRP-conjugated Goat anti Rat IgG as a detection reagent. (Low power).

---