

## ARG23023 anti-CD25 antibody [OX-39]

Package: 100 µg  
Store at: -20°C

### Summary

<b>Product Description</b>	Mouse Monoclonal antibody [OX-39] recognizes CD25 Mouse anti Rat CD25 antibody, clone OX-39 recognizes the alpha chain of rat CD25, otherwise known as IL-2 receptor alpha, a ~55 kDa type I membrane glycoprotein, expressed by activated T cells but not resting lymphocytes. CD25 is also expressed by dendritic cells found in the thymus medulla. Mouse anti Rat CD25 antibody, clone OX-39 has been described reacting with paraffin-embedded material following PLP fixation (periodate-lysine-paraformaldehyde). Mouse anti Rat CD25 antibody, clone OX-39 has been shown to weakly inhibit the binding of IL-2 to Con-A stimulated spleen blasts (Paterson et al. 1987).
<b>Tested Reactivity</b>	Rat
<b>Tested Application</b>	ELISA, FACS, IHC-Fr, IHC-P, IP
<b>Host</b>	Mouse
<b>Clonality</b>	Monoclonal
<b>Clone</b>	OX-39
<b>Isotype</b>	IgG1
<b>Target Name</b>	CD25
<b>Species</b>	Rat
<b>Immunogen</b>	Stimulated Rat T cells
<b>Conjugation</b>	Un-conjugated
<b>Alternate Names</b>	IL-2-RA; IL-2 receptor subunit alpha; CD25; TCGFR; TAC antigen; IL2R; CD antigen CD25; Interleukin-2 receptor subunit alpha; IL-2R subunit alpha; p55; IL2-RA; IDDM10

### Application Instructions

<b>Application table</b>	<table border="1" style="width: 100%; border-collapse: collapse;"> <thead> <tr> <th style="text-align: left;">Application</th> <th style="text-align: left;">Dilution</th> </tr> </thead> <tbody> <tr> <td>ELISA</td> <td>Assay-dependent</td> </tr> <tr> <td>FACS</td> <td>1:10 - 1:50</td> </tr> <tr> <td>IHC-Fr</td> <td>Assay-dependent</td> </tr> <tr> <td>IHC-P</td> <td>Assay-dependent</td> </tr> <tr> <td>IP</td> <td>Assay-dependent</td> </tr> </tbody> </table>	Application	Dilution	ELISA	Assay-dependent	FACS	1:10 - 1:50	IHC-Fr	Assay-dependent	IHC-P	Assay-dependent	IP	Assay-dependent
Application	Dilution												
ELISA	Assay-dependent												
FACS	1:10 - 1:50												
IHC-Fr	Assay-dependent												
IHC-P	Assay-dependent												
IP	Assay-dependent												
<b>Application Note</b>	<p>IHC-P: PLP fixation is recommended.</p> <p>FACS: Use 10 µl of the suggested working dilution to label 10<sup>6</sup> cells in 100 µl.</p> <p>* The dilutions indicate recommended starting dilutions and the optimal dilutions or concentrations should be determined by the scientist.</p>												

### Properties

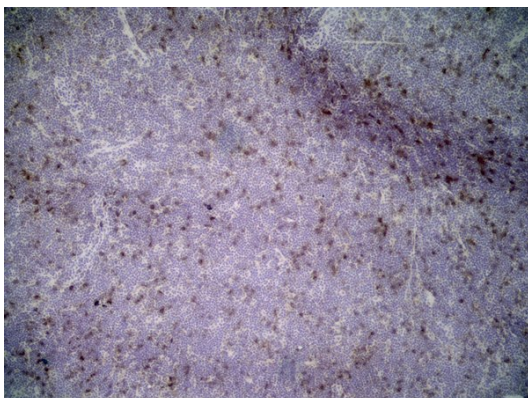
<b>Form</b>	Liquid
-------------	--------

Purification	Purification with Protein G.
Buffer	PBS and 0.09% Sodium azide
Preservative	0.09% Sodium azide
Concentration	1 mg/ml
Storage instruction	For continuous use, store undiluted antibody at 2-8°C for up to a week. For long-term storage, aliquot and store at -20°C or below. Storage in frost free freezers is not recommended. Avoid repeated freeze/thaw cycles. Suggest spin the vial prior to opening. The antibody solution should be gently mixed before use.
Note	For laboratory research only, not for drug, diagnostic or other use.

## Bioinformation

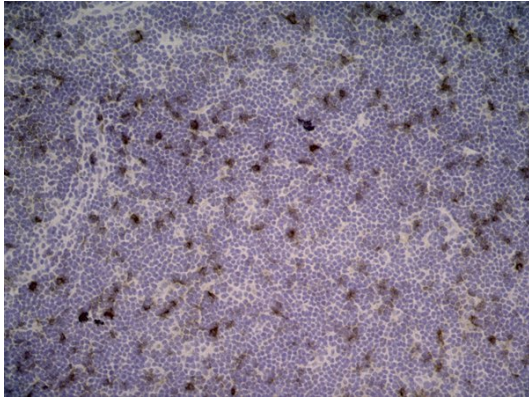
Gene Symbol	Il2ra
Gene Full Name	interleukin 2 receptor, alpha
Background	The interleukin 2 (IL2) receptor alpha (IL2RA) and beta (IL2RB) chains, together with the common gamma chain (IL2RG), constitute the high-affinity IL2 receptor. Homodimeric alpha chains (IL2RA) result in low-affinity receptor, while homodimeric beta (IL2RB) chains produce a medium-affinity receptor. Normally an integral-membrane protein, soluble IL2RA has been isolated and determined to result from extracellular proteolysis. Alternately-spliced IL2RA mRNAs have been isolated, but the significance of each is presently unknown. Mutations in this gene are associated with interleukin 2 receptor alpha deficiency.[provided by RefSeq, Nov 2009]
Function	Receptor for interleukin-2. [UniProt]
Research Area	Immune System antibody; Pre-B Cell Marker antibody
Calculated Mw	31 kDa

## Images



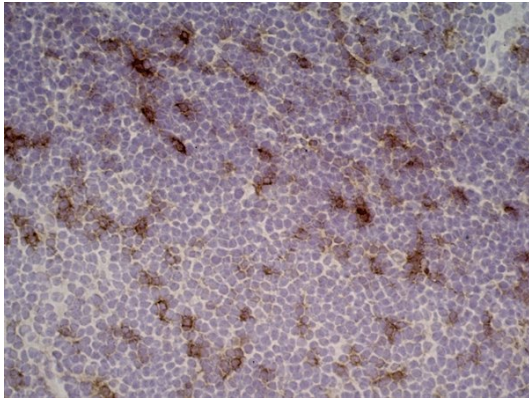
ARG23023 anti-CD25 antibody [OX-39] IHC-Fr image

Immunohistochemistry: Rat lymph node cryosection stained with ARG23023 anti-CD25 antibody [OX-39] followed by HRP-conjugated Goat anti Mouse IgG1 as a detection reagent. (Low power).



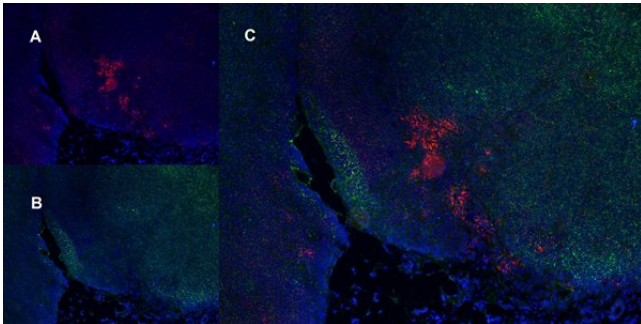
ARG23023 anti-CD25 antibody [OX-39] IHC-Fr image

Immunohistochemistry: Rat lymph node cryosection stained with ARG23023 anti-CD25 antibody [OX-39] followed by HRP-conjugated Goat anti Mouse IgG1 as a detection reagent. (Medium power).



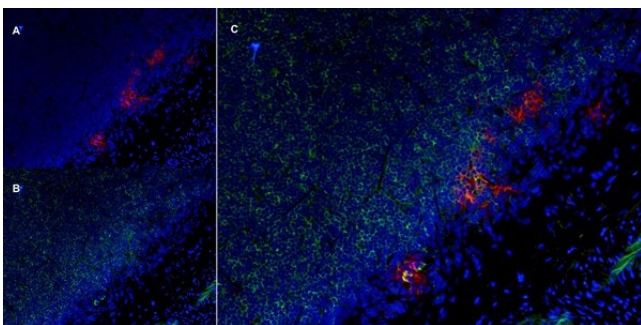
ARG23023 anti-CD25 antibody [OX-39] IHC-Fr image

Immunohistochemistry: Rat lymph node cryosection stained with ARG23023 anti-CD25 antibody [OX-39] followed by HRP-conjugated Goat anti Mouse IgG1 as a detection reagent. (High power).



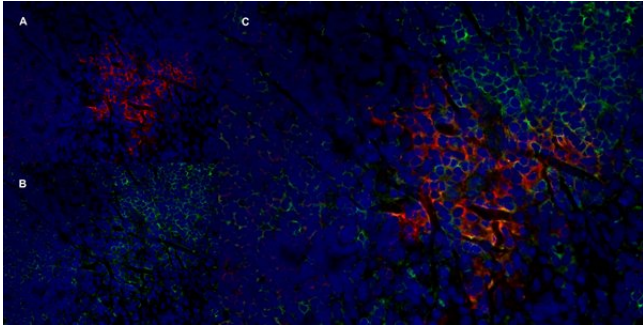
ARG23023 anti-CD25 antibody [OX-39] IHC-Fr image

Immunohistochemistry: Rat lymph node cryosection stained with ARG23023 anti-CD25 antibody [OX-39], red in A and Mouse anti Rat CD8, green in B. C is the merged image with nuclei counterstained blue using DAPI. (Low power).



ARG23023 anti-CD25 antibody [OX-39] IHC-Fr image

Immunohistochemistry: Rat lymph node cryosection stained with ARG23023 anti-CD25 antibody [OX-39], red in A and Mouse anti Rat CD8, green in B. C is the merged image with nuclei counterstained blue using DAPI. (Medium power).



#### ARG23023 anti-CD25 antibody [OX-39] IHC-Fr image

Immunohistochemistry: Rat lymph node cryosection stained with ARG23023 anti-CD25 antibody [OX-39], red in A and Mouse anti Rat CD8, green in B. C is the merged image with nuclei counterstained blue using DAPI. (High power).