

## ARG22876 anti-Inhibin A antibody [R1]

Package: 500 µl  
Store at: -20°C

### Summary

Product Description	Mouse Monoclonal antibody [R1] recognizes Inhibin A
Tested Reactivity	Hu, Bov, Sheep
Tested Application	IHC-Fr, IHC-P, WB
Host	Mouse
Clonality	Monoclonal
Clone	R1
Isotype	IgG2a
Target Name	Inhibin A
Species	Human
Immunogen	Synthetic peptide around aa. 1-32 of Human Inhibin-alpha.
Conjugation	Un-conjugated
Alternate Names	Inhibin alpha chain

### Application Instructions

Application table	Application	Dilution
	IHC-Fr	Neat - 1:100
	IHC-P	Neat - 1:100
	WB	1:100 - 1:200
Application Note	IHC-P: Antigen Retrieval: Boil tissue section in Sodium citrate buffer (pH 6.0) or Tris/EDTA buffer (pH 9.0). * The dilutions indicate recommended starting dilutions and the optimal dilutions or concentrations should be determined by the scientist.	

### Properties

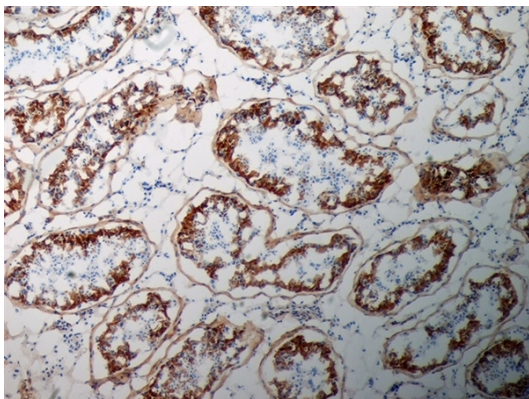
Form	Liquid
Purification	Tissue Culture Supernatant.
Buffer	Tissue Culture Supernatant and 0.09% Sodium azide
Preservative	0.09% Sodium azide
Storage instruction	For continuous use, store undiluted antibody at 2-8°C for up to a week. For long-term storage, aliquot and store at -20°C or below. Storage in frost free freezers is not recommended. Avoid repeated freeze/thaw cycles. Suggest spin the vial prior to opening. The antibody solution should be gently mixed before use.
Note	For laboratory research only, not for drug, diagnostic or other use.

## Bioinformation

---

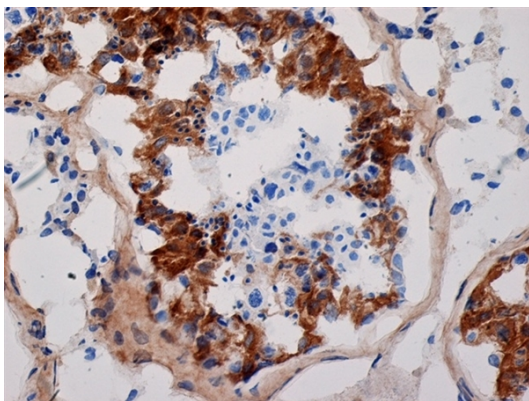
Gene Symbol	INHA
Gene Full Name	inhibin, alpha
Background	This gene encodes the alpha subunit of inhibins A and B protein complexes. These complexes negatively regulate follicle stimulating hormone secretion from the pituitary gland. Inhibins have also been implicated in regulating numerous cellular processes including cell proliferation, apoptosis, immune response and hormone secretion.[provided by RefSeq, Dec 2010]
Function	Inhibins and activins inhibit and activate, respectively, the secretion of follitropin by the pituitary gland. Inhibins/activins are involved in regulating a number of diverse functions such as hypothalamic and pituitary hormone secretion, gonadal hormone secretion, germ cell development and maturation, erythroid differentiation, insulin secretion, nerve cell survival, embryonic axial development or bone growth, depending on their subunit composition. Inhibins appear to oppose the functions of activins. [UniProt]
Calculated Mw	40 kDa
PTM	Proteolytic processing yields a number of bioactive forms. The 20/23 kDa forms consist solely of the mature alpha chain, the 26/29 kDa forms consist of the most N-terminal propeptide linked through a disulfide bond to the mature alpha chain, the 50/53 kDa forms encompass the entire proprotein. Each type can be furthermore either mono- or diglycosylated, causing the mass difference.

## Images



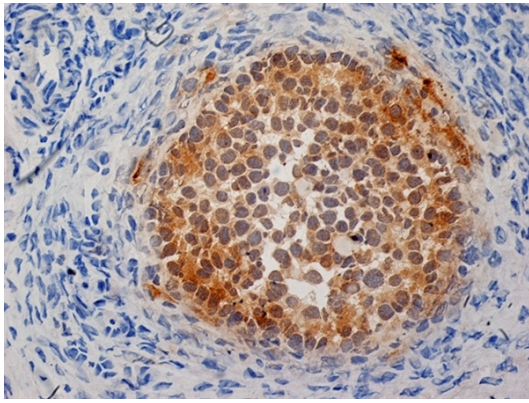
ARG22876 anti-Inhibin A antibody [R1] IHC-Fr image

Immunohistochemistry: Cryosections of Human testis stained with ARG22876 anti-Inhibin A antibody [R1]. Blocking was with 0.3% H<sub>2</sub>O<sub>2</sub> + 10% normal goat serum. Visualization was with DAB substrate and counter-staining with haematoxylin. (Low power).



ARG22876 anti-Inhibin A antibody [R1] IHC-Fr image

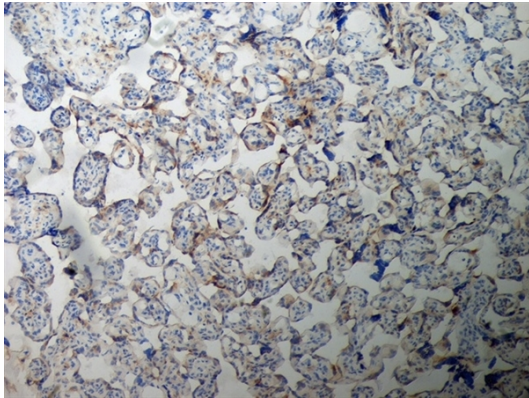
Immunohistochemistry: Cryosections of Human testis stained with ARG22876 anti-Inhibin A antibody [R1]. Blocking was with 0.3% H<sub>2</sub>O<sub>2</sub> + 10% normal goat serum. Visualization was with DAB substrate and counter-staining with haematoxylin. (High power).



ARG22876 anti-Inhibin A antibody [R1] IHC-Fr image

Immunohistochemistry: Cryosections of Human ovary stained with ARG22876 anti-Inhibin A antibody [R1]. Blocking was with 0.3% H<sub>2</sub>O<sub>2</sub> + 10% normal goat serum. Visualization was with DAB substrate and counter-staining with haematoxylin.

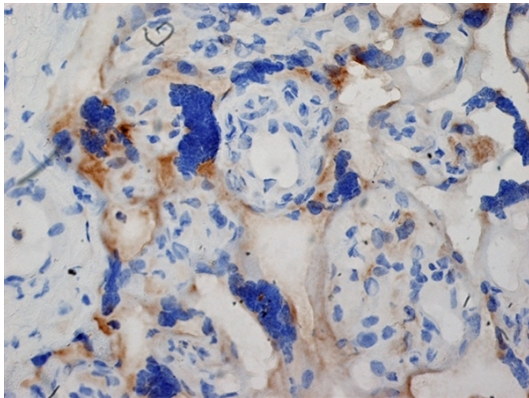
---



ARG22876 anti-Inhibin A antibody [R1] IHC-Fr image

Immunohistochemistry: Cryosections of Human placenta stained with ARG22876 anti-Inhibin A antibody [R1]. Blocking was with 0.3% H<sub>2</sub>O<sub>2</sub> + 10% normal goat serum. Visualization was with DAB substrate and counter-staining with haematoxylin. (Low power).

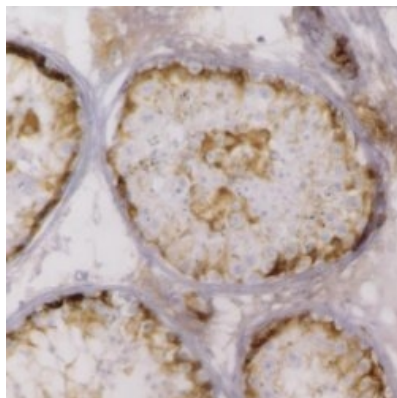
---



ARG22876 anti-Inhibin A antibody [R1] IHC-Fr image

Immunohistochemistry: Cryosections of Human placenta stained with ARG22876 anti-Inhibin A antibody [R1]. Blocking was with 0.3% H<sub>2</sub>O<sub>2</sub> + 10% normal goat serum. Visualization was with DAB substrate and counter-staining with haematoxylin. (High power).

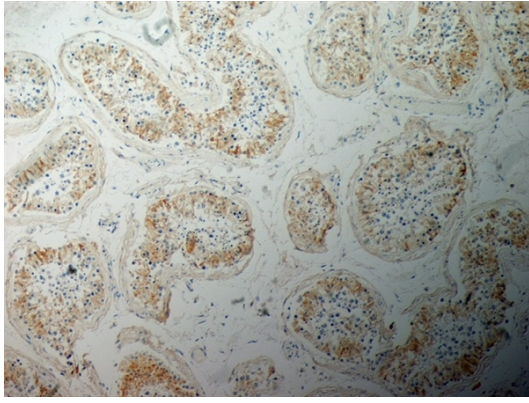
---



ARG22876 anti-Inhibin A antibody [R1] IHC-P image

Immunohistochemistry: Formalin-fixed and paraffin-embedded Human testis stained with ARG22876 anti-Inhibin A antibody [R1], showing Sertoli cells, Leydig cells and spermatogonia.

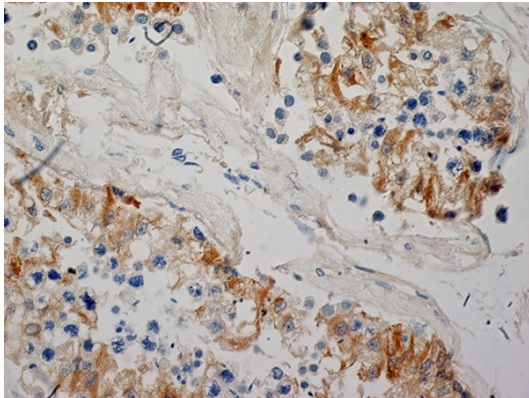
---



ARG22876 anti-Inhibin A antibody [R1] IHC-P image

Immunohistochemistry: Formalin-fixed and paraffin-embedded sections of Human testis stained with ARG22876 anti-Inhibin A antibody [R1]. Antigen Retrieval: Boil tissue section in Tris/EDTA buffer (pH 9.0). Blocking was with peroxidase blocking reagent + 10% normal goat serum. Visualization was with DAB substrate and counter-staining with haematoxylin. (Low power).

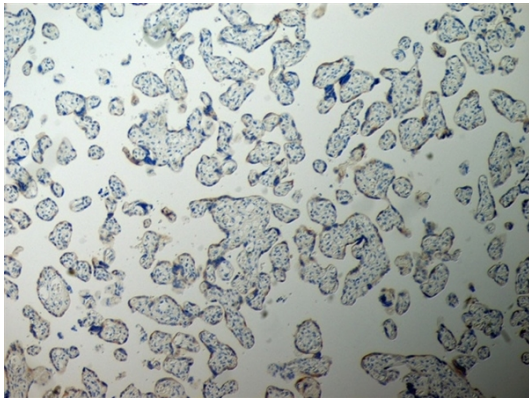
---



ARG22876 anti-Inhibin A antibody [R1] IHC-P image

Immunohistochemistry: Formalin-fixed and paraffin-embedded sections of Human testis stained with ARG22876 anti-Inhibin A antibody [R1]. Antigen Retrieval: Boil tissue section in Tris/EDTA buffer (pH 9.0). Blocking was with peroxidase blocking reagent + 10% normal goat serum. Visualization was with DAB substrate and counter-staining with haematoxylin. (High power).

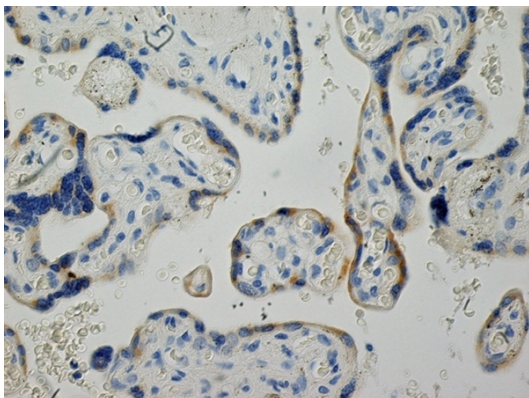
---



ARG22876 anti-Inhibin A antibody [R1] IHC-P image

Immunohistochemistry: Formalin-fixed and paraffin-embedded sections of Human placenta stained with ARG22876 anti-Inhibin A antibody [R1]. Antigen Retrieval: Boil tissue section in Tris/EDTA buffer (pH 9.0). Blocking was with peroxidase blocking reagent + 10% normal goat serum. Visualization was with DAB substrate and counter-staining with haematoxylin. (Low power).

---



ARG22876 anti-Inhibin A antibody [R1] IHC-P image

Immunohistochemistry: Formalin-fixed and paraffin-embedded sections of Human placenta stained with ARG22876 anti-Inhibin A antibody [R1]. Antigen Retrieval: Boil tissue section in Tris/EDTA buffer (pH 9.0). Blocking was with peroxidase blocking reagent + 10% normal goat serum. Visualization was with DAB substrate and counter-staining with haematoxylin. (High power).

---