

## ARG22865 anti-CD11b antibody [5C6]

Package: 100 µg  
Store at: -20°C

### Summary

<b>Product Description</b>	Rat Monoclonal antibody [5C6] recognizes CD11b Rat anti Mouse CD11b antibody, clone 5C6 recognizes CD11b, also known as the integrin alpha M chain. CD11b is implicated in various adhesive interactions of monocytes, macrophages and granulocytes as well as in mediating the uptake of complement-coated particles. Rat anti Mouse CD11b antibody, clone 5C6 immunoprecipitates a heterodimer of ~165 and ~95 kDa. Rat anti Mouse CD11b antibody, clone 5C6 exhibits various functional properties, reportedly inhibiting adhesion in vitro and inflammatory recruitment in vivo. Rat anti Mouse CD11b antibody, clone 5C6 also inhibits delayed hypersensitivity, potentiates bacterial infections and inhibits type 1 diabetes.
<b>Tested Reactivity</b>	Hu, Ms
<b>Tested Application</b>	FACS, ICC/IF, IHC-Fr, IP
<b>Host</b>	Rat
<b>Clonality</b>	Monoclonal
<b>Clone</b>	5C6
<b>Isotype</b>	IgG2b
<b>Target Name</b>	CD11b
<b>Species</b>	Mouse
<b>Immunogen</b>	Thioglycollate-elicited Peritoneal Macrophages (TPM)
<b>Conjugation</b>	Un-conjugated
<b>Alternate Names</b>	MAC1A; CR3A; CR-3 alpha chain; Cell surface glycoprotein MAC-1 subunit alpha; Integrin alpha-M; MAC-1; CD11 antigen-like family member B; Leukocyte adhesion receptor MO1; MO1A; SLEB6; Neutrophil adherence receptor; CD antigen CD11b; CD11B

### Application Instructions

<b>Application table</b>	<table border="1" style="width: 100%; border-collapse: collapse;"> <thead> <tr style="background-color: #f2f2f2;"> <th style="text-align: left;">Application</th> <th style="text-align: left;">Dilution</th> </tr> </thead> <tbody> <tr> <td>FACS</td> <td>1:10</td> </tr> <tr> <td>ICC/IF</td> <td>Assay-dependent</td> </tr> <tr> <td>IHC-Fr</td> <td>Assay-dependent</td> </tr> <tr> <td>IP</td> <td>Assay-dependent</td> </tr> </tbody> </table>	Application	Dilution	FACS	1:10	ICC/IF	Assay-dependent	IHC-Fr	Assay-dependent	IP	Assay-dependent
Application	Dilution										
FACS	1:10										
ICC/IF	Assay-dependent										
IHC-Fr	Assay-dependent										
IP	Assay-dependent										
<b>Application Note</b>	FACS: Use 10 µl of the suggested working dilution to label 10 <sup>6</sup> cells in 100 µl * The dilutions indicate recommended starting dilutions and the optimal dilutions or concentrations should be determined by the scientist.										

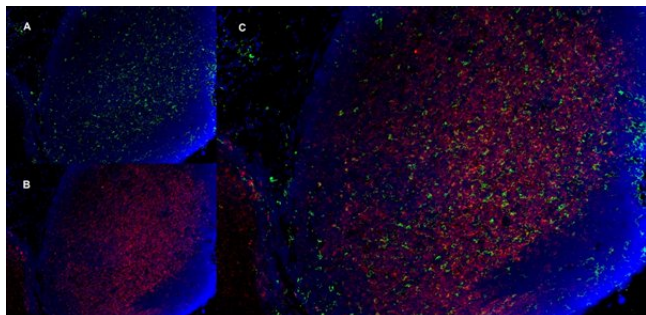
### Properties

<b>Form</b>	Liquid
<b>Purification</b>	Purified by ion exchange chromatography.

Buffer	PBS and 0.09% Sodium azide
Preservative	0.09% Sodium azide
Concentration	1 mg/ml
Storage instruction	For continuous use, store undiluted antibody at 2-8°C for up to a week. For long-term storage, aliquot and store at -20°C or below. Storage in frost free freezers is not recommended. Avoid repeated freeze/thaw cycles. Suggest spin the vial prior to opening. The antibody solution should be gently mixed before use.
Note	For laboratory research only, not for drug, diagnostic or other use.

## Bioinformation

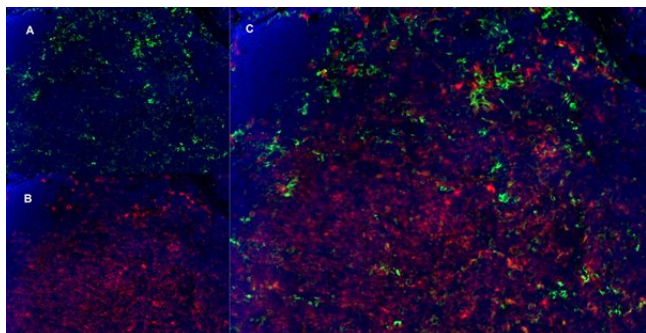
Gene Symbol	Itgam
Gene Full Name	integrin alpha M
Background	CD11b (integrin alpha M chain): Integrins are heterodimeric integral membrane proteins composed of an alpha chain and a beta chain. This I-domain containing alpha integrin combines with the beta 2 chain (ITGB2) to form a leukocyte-specific integrin referred to as macrophage receptor 1 ('Mac-1'), or inactivated-C3b (iC3b) receptor 3 ('CR3'). The alpha M beta 2 integrin is important in the adherence of neutrophils and monocytes to stimulated endothelium, and also in the phagocytosis of complement coated particles. Multiple transcript variants encoding different isoforms have been found for this gene. [provided by RefSeq, Mar 2009]
Function	CD11b: Integrin ITGAM/ITGB2 is implicated in various adhesive interactions of monocytes, macrophages and granulocytes as well as in mediating the uptake of complement-coated particles and pathogens (PubMed:9558116, PubMed:20008295). It is identical with CR-3, the receptor for the iC3b fragment of the third complement component. It probably recognizes the R-G-D peptide in C3b. Integrin ITGAM/ITGB2 is also a receptor for fibrinogen, factor X and ICAM1. It recognizes P1 and P2 peptides of fibrinogen gamma chain. Regulates neutrophil migration (PubMed:28807980). In association with beta subunit ITGB2/CD18, required for CD177-PRTN3-mediated activation of TNF primed neutrophils (PubMed:21193407). May regulate phagocytosis-induced apoptosis in extravasated neutrophils. May play a role in mast cell development. Required with TYROBP/DAP12 in microglia to control production of microglial superoxide ions which promote the neuronal apoptosis that occurs during brain development. [UniProt]
Highlight	Related products: <a href="#">CD11b antibodies</a> ; <a href="#">CD11b Duos / Panels</a> ; <a href="#">Anti-Rat IgG secondary antibodies</a> ; Related news: <a href="#">New antibody panels and duos for Tumor immune microenvironment</a> <a href="#">Anti-SerpinB9 therapy, a new strategy for cancer therapy</a>
Research Area	MDSC Marker antibody; Myeloid-derived suppressor cell antibody
Calculated Mw	127 kDa



ARG22865 anti-CD11b antibody [5C6] IHC-Fr image

Immunohistochemistry: Mouse lymph node cryosection stained with ARG22865 anti-CD11b antibody [5C6], green in A and Rat anti Mouse CD8, clone YTS105.18, red in B. C is the merged image with nuclei counterstained blue using DAPI. (Low power).

---



ARG22865 anti-CD11b antibody [5C6] IHC-Fr image

Immunohistochemistry: Mouse lymph node cryosection stained with ARG22865 anti-CD11b antibody [5C6], green in A and Rat anti Mouse CD8, clone YTS105.18, red in B. C is the merged image with nuclei counterstained blue using DAPI. (High power).

---