

## ARG22862 anti-Ly6C antibody [ER-MP20]

Package: 100 µg  
Store at: -20°C

### Summary

Product Description	Rat Monoclonal antibody [ER-MP20] recognizes Ly6C Rat anti Mouse Ly-6C antibody, clone ER-MP20 recognizes murine Ly-6C, a ~14 kDa differentiation antigen, expressed on macrophage/dendritic cell precursors in mid-stage development (late CFU-M, monoblasts and immature monocytes), granulocytes, and on a wide range of endothelial cells and subpopulations of B- and T-lymphocytes. Rat anti Mouse Ly-6C antibody, clone ER-MP20 is able to distinguish multiple mouse blood monocyte subsets: immature Ly-6Chi monocytes are recruited to acute peripheral inflammation and develop into Ly-6C+ exudate macrophages, whereas more mature Ly-6C-/lo monocytes are precursors for tissue macrophages and dendritic cells in steady state. Rat anti Mouse Ly-6C, clone ER-MP20 can be used in conjunction with clone ER-MP12 in two colour flow cytometric analysis, to identify different stages of myeloid progenitor cells in mouse bone marrow (Leenen et al. 1990).
Tested Reactivity	Ms
Tested Application	FACS, IHC-Fr, IP
Host	Rat
Clonality	Monoclonal
Clone	ER-MP20
Isotype	IgG2a
Target Name	Ly6C
Species	Mouse
Immunogen	Balb/c macrophage precursor cell hybrids.
Conjugation	Un-conjugated
Alternate Names	AA959465; Ly-6C1; AA682074; Ly-6C; Lymphocyte antigen 6C1; Ly6c

### Application Instructions

Application table	Application	Dilution
	FACS	Neat
	IHC-Fr	Assay-dependent
	IP	Assay-dependent
Application Note	FACS: Use 10 µl of the suggested working dilution to label 10 <sup>6</sup> cells in 100 µl. * The dilutions indicate recommended starting dilutions and the optimal dilutions or concentrations should be determined by the scientist.	

### Properties

Form	Liquid
Purification	Purification with Protein G.

Buffer	PBS and 0.09% Sodium azide
Preservative	0.09% Sodium azide
Concentration	1 mg/ml
Storage instruction	For continuous use, store undiluted antibody at 2-8°C for up to a week. For long-term storage, aliquot and store at -20°C or below. Storage in frost free freezers is not recommended. Avoid repeated freeze/thaw cycles. Suggest spin the vial prior to opening. The antibody solution should be gently mixed before use.
Note	For laboratory research only, not for drug, diagnostic or other use.

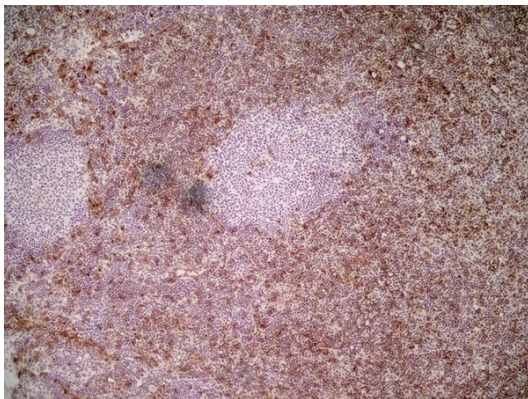
## Bioinformation

---

Gene Symbol	Ly6c1
Gene Full Name	lymphocyte antigen 6 complex, locus C1
Highlight	Related products: <a href="#">Ly6 antibodies</a> ; <a href="#">Ly6 ELISA Kits</a> ; <a href="#">Ly6 Duos / Panels</a> ; <a href="#">Anti-Rat IgG secondary antibodies</a> ; Related news: <a href="#">New antibody panels and duos for Tumor immune microenvironment</a> <a href="#">Exploring Antiviral Immune Response</a>
Research Area	Mouse Inflammatory Cell Marker antibody; Neutrophil Marker antibody; Mouse MDSC Marker antibody; Myeloid-derived suppressor cell antibody
Calculated Mw	14 kDa

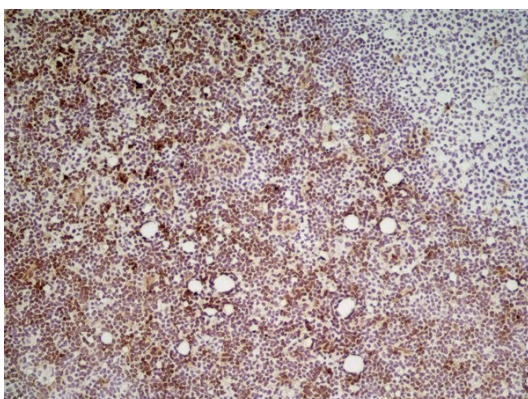
## Images

---



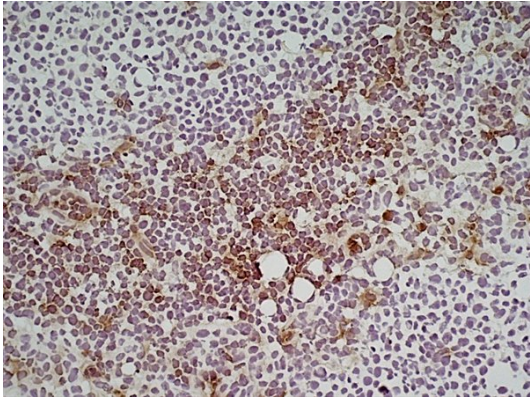
ARG22862 anti-Ly6C antibody [ER-MP20] IHC-Fr image

Immunohistochemistry: Mouse lymph node cryosection stained with ARG22862 anti-Ly6C antibody [ER-MP20] followed by HRP-conjugated Goat anti Rat IgG antibody. (Low power).



ARG22862 anti-Ly6C antibody [ER-MP20] IHC-Fr image

Immunohistochemistry: Mouse lymph node cryosection stained with ARG22862 anti-Ly6C antibody [ER-MP20] followed by HRP-conjugated Goat anti Rat IgG antibody. (Medium power).



**ARG22862 anti-Ly6C antibody [ER-MP20] IHC-Fr image**

Immunohistochemistry: Mouse lymph node cryosection stained with ARG22862 anti-Ly6C antibody [ER-MP20] followed by HRP-conjugated Goat anti Rat IgG antibody. (High power).