

ARG22798 anti-T Lymphocytes antibody [KEN-5]

Package: 100 µg
Store at: -20°C

Summary

Product Description	<p>Mouse Monoclonal antibody [KEN-5] recognizes T Lymphocytes</p> <p>This antibody recognizes Rabbit (lapine) T-cells. Clone KEN-5 recognizes >90% thymocytes and approximately 40-45% mesenteric lymph node cells and immunoprecipitates a 67 kDa protein from Rabbit thymocytes.</p> <p>In contrast to Humans and mice where only a very small population of B-cells express the CD5 antigen, the CD5 antigen in Rabbits is widely expressed by peripheral blood B cells. However, the KEN-5 antibody, while originally reported as recognising Rabbit CD5 (Kotani et al.1993), does not bind to Rabbit CD5 transfectants. Furthermore, clone KEN-5, unlike other known antibodies recognising Rabbit CD5 and anti Human cross reactive CD5 antibodies, shows very limited binding to Rabbit B-cells, which in adult Rabbits have been demonstrated to express CD5 (Raman & Knight 1992) More recently studies (Pospisil et al. 2009) indicate that clone KEN-5 may recognize a epitope that is dependant on glycosylation to maintain its structural configuration which may explain why this antibody does not recognize recombinant Rabbit CD5 produced in insect cells which contain different glycans from those found in mammalian cells. It has therefore been suggested that KEN-5 may distinguish between different isoforms of CD5 in lapine T and B cells (Pospisil et al. 2009).</p>
Tested Reactivity	Rb
Tested Application	ELISA, FACS, IHC-Fr, IP
Host	Mouse
Clonality	Monoclonal
Clone	KEN-5
Isotype	IgG1
Target Name	T Lymphocytes
Species	Rabbit
Immunogen	Rabbit Thymocytes
Conjugation	Un-conjugated

Application Instructions

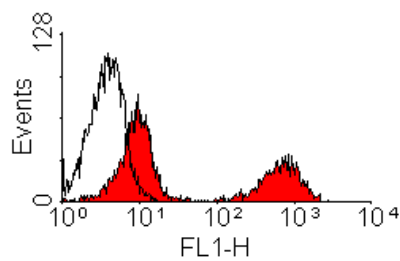
Application table	<table border="1" style="width: 100%; border-collapse: collapse;"> <thead> <tr> <th style="width: 50%;">Application</th> <th style="width: 50%;">Dilution</th> </tr> </thead> <tbody> <tr> <td>ELISA</td> <td>Assay-dependent</td> </tr> <tr> <td>FACS</td> <td>1:50 - 1:200</td> </tr> <tr> <td>IHC-Fr</td> <td>Assay-dependent</td> </tr> <tr> <td>IP</td> <td>Assay-dependent</td> </tr> </tbody> </table>	Application	Dilution	ELISA	Assay-dependent	FACS	1:50 - 1:200	IHC-Fr	Assay-dependent	IP	Assay-dependent
Application	Dilution										
ELISA	Assay-dependent										
FACS	1:50 - 1:200										
IHC-Fr	Assay-dependent										
IP	Assay-dependent										
Application Note	<p>FACS: Use 10 µl of the suggested working dilution to label 10⁶ cells in 100 µl.</p> <p>* The dilutions indicate recommended starting dilutions and the optimal dilutions or concentrations should be determined by the scientist.</p>										

Properties

Form	Liquid
Purification	Purification with Protein G.
Buffer	PBS and 0.09% Sodium azide.
Preservative	0.09% Sodium azide
Concentration	1 mg/ml
Storage instruction	For continuous use, store undiluted antibody at 2-8°C for up to a week. For long-term storage, aliquot and store at -20°C or below. Storage in frost free freezers is not recommended. Avoid repeated freeze/thaw cycles. Suggest spin the vial prior to opening. The antibody solution should be gently mixed before use.
Note	For laboratory research only, not for drug, diagnostic or other use.

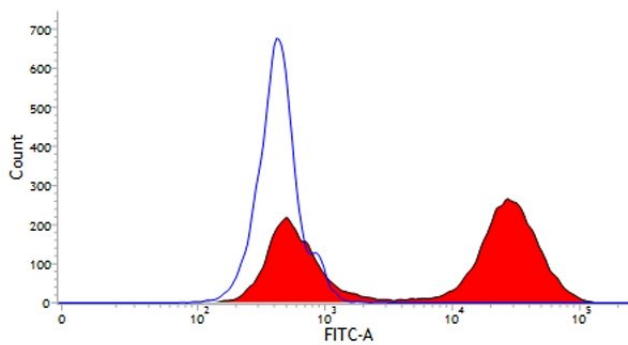
Images

ARG22798 anti-T Lymphocytes antibody [KEN-5] FACS image



Flow Cytometry: Rabbit peripheral blood lymphocytes stained with ARG22798 anti-T Lymphocytes antibody [KEN-5].

ARG22798 anti-T Lymphocytes antibody [KEN-5] FACS image



Flow Cytometry: Rabbit peripheral lymphocytes stained with ARG22798 anti-T Lymphocytes antibody [KEN-5] followed by Goat anti-Mouse IgG (FITC).