

**ARG22793**  
**anti-CD18 / LFA1 beta antibody [WT.3] (FITC)**Package: 50 µg  
Store at: 4°C

### Summary

Product Description	FITC-conjugated Mouse Monoclonal antibody [WT.3] recognizes CD18 / LFA1 beta
Tested Reactivity	Rat
Tested Application	FACS
Host	Mouse
Clonality	Monoclonal
Clone	WT.3
Isotype	IgG1
Target Name	CD18 / LFA1 beta
Species	Rat
Immunogen	FTL-43
Conjugation	FITC
Alternate Names	MF17; LAD; CD antigen CD18; MFI7; MAC-1; Cell surface adhesion glycoproteins LFA-1/CR3/p150,95 subunit beta; LCAMB; Integrin beta-2; Complement receptor C3 subunit beta; LFA-1; CD18

### Application Instructions

Application table	Application	Dilution
	FACS	Neat

**Application Note** FACS: Use 10 µl of the suggested working dilution to label 10<sup>6</sup> cells in 100 µl.  
\* The dilutions indicate recommended starting dilutions and the optimal dilutions or concentrations should be determined by the scientist.

### Properties

Form	Liquid
Purification	Purification with Protein A.
Buffer	PBS, 0.09% Sodium azide and 1% BSA.
Preservative	0.09% Sodium azide
Stabilizer	1% BSA
Concentration	0.1 mg/ml
Storage instruction	Aliquot and store in the dark at 2-8°C. Keep protected from prolonged exposure to light. Avoid repeated freeze/thaw cycles. Suggest spin the vial prior to opening. The antibody solution should be gently mixed before use.
Note	For laboratory research only, not for drug, diagnostic or other use.

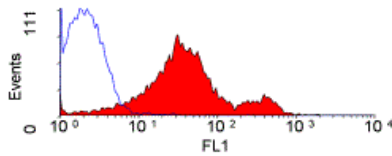
## Bioinformation

Gene Symbol	ITGB2
Gene Full Name	integrin, beta 2 (complement component 3 receptor 3 and 4 subunit)
Background	This gene encodes an integrin beta chain, which combines with multiple different alpha chains to form different integrin heterodimers. Integrins are integral cell-surface proteins that participate in cell adhesion as well as cell-surface mediated signalling. The encoded protein plays an important role in immune response and defects in this gene cause leukocyte adhesion deficiency. Alternative splicing results in multiple transcript variants. [provided by RefSeq, Dec 2014]
Function	Integrin alpha-L/beta-2 is a receptor for ICAM1, ICAM2, ICAM3 and ICAM4. Integrins alpha-M/beta-2 and alpha-X/beta-2 are receptors for the iC3b fragment of the third complement component and for fibrinogen. Integrin alpha-X/beta-2 recognizes the sequence G-P-R in fibrinogen alpha-chain. Integrin alpha-M/beta-2 recognizes P1 and P2 peptides of fibrinogen gamma chain. Integrin alpha-M/beta-2 is also a receptor for factor X. Integrin alpha-D/beta-2 is a receptor for ICAM3 and VCAM1. Triggers neutrophil transmigration during lung injury through PTK2B/PYK2-mediated activation. [UniProt]
Calculated Mw	85 kDa
PTM	Both Ser-745 and Ser-756 become phosphorylated when T-cells are exposed to phorbol esters (PubMed:11700305). Phosphorylation on Thr-758 (but not on Ser-756) allows interaction with 14-3-3 proteins (PubMed:11700305, PubMed:16301335).

## Images

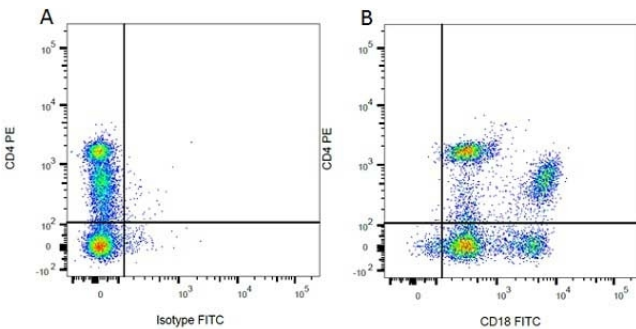
### ARG22793 anti-CD18 / LFA1 beta antibody [WT.3] (FITC) FACS image

Flow Cytometry: Rat splenocytes stained with ARG22793 anti-CD18 / LFA1 beta antibody [WT.3] (FITC).

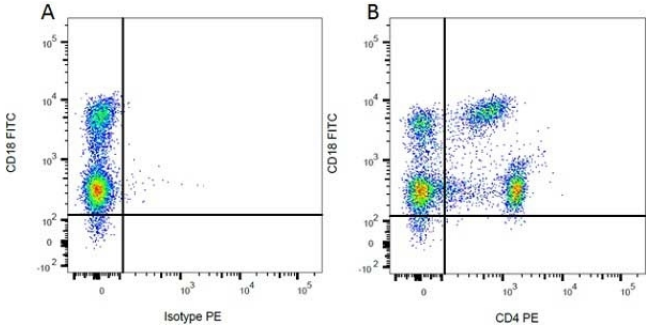


### ARG22793 anti-CD18 / LFA1 beta antibody [WT.3] (FITC) FACS image

Flow Cytometry: Figure A. anti-Rat CD4 (RPE) and Mouse IgG1 isotype control (FITC). Figure B. anti-Rat CD4 (RPE) and ARG22793 anti-CD18 / LFA1 beta antibody [WT.3] (FITC). All experiments performed on red cell lysed Rat blood gated on mononuclear cells.



ARG22793 anti-CD18 / LFA1 beta antibody [WT.3] (FITC) FACS image



Flow Cytometry: Figure A. ARG22793 anti-CD18 / LFA1 beta antibody [WT.3] (FITC) and Mouse IgG1 isotype control (RPE). Figure B. ARG22793 and anti-Rat CD4 (RPE). All experiments performed on red cell lysed Rat blood gated on mononuclear cells.