

## ARG22784 anti-MHC Class II DR antibody [CC108]

Package: 250 µg  
Store at: -20°C

### Summary

Product Description	<p>Mouse Monoclonal antibody [CC108] recognizes MHC Class II DR</p> <p>This antibody recognizes Bovine MHC Class II DR. MHC Class II molecules are constitutively expressed on antigen presenting cells such as dendritic cells, B lymphocytes, monocytes, macrophages, activated T lymphocytes and may be induced on a range of other cell types by interferon gamma.</p> <p>The major histocompatibility complex (MHC) is a cluster of genes some of which are important in the immune response to infections. In cattle, this complex is referred to as the Bovine leukocyte antigen (BoLA) region. There are 2 major types of MHC class IIa molecules encoded by the BoLA which are DR and DQ each composed of an alpha and beta chain.</p>
Tested Reactivity	Bov
Tested Application	FACS
Host	Mouse
Clonality	Monoclonal
Clone	CC108
Isotype	IgG1
Target Name	MHC Class II DR
Species	Bovine
Conjugation	Un-conjugated

### Application Instructions

Application table	Application	Dilution
	FACS	1:25 - 1:200
Application Note	<p>FACS: Use 10 µl of the suggested working dilution to label 10<sup>6</sup> cells in 100 µl.</p> <p>* The dilutions indicate recommended starting dilutions and the optimal dilutions or concentrations should be determined by the scientist.</p>	

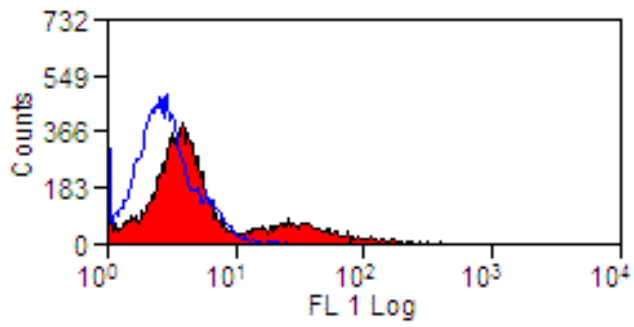
### Properties

Form	Liquid
Purification	Purification with Protein G.
Buffer	PBS and 0.09% Sodium azide.
Preservative	0.09% Sodium azide
Concentration	1 mg/ml
Storage instruction	<p>For continuous use, store undiluted antibody at 2-8°C for up to a week. For long-term storage, aliquot and store at -20°C or below. Storage in frost free freezers is not recommended. Avoid repeated freeze/thaw cycles. Suggest spin the vial prior to opening. The antibody solution should be gently mixed before use.</p>

Images

---

ARG22784 anti-MHC Class II DR antibody [CC108] FACS image



Flow Cytometry: Bovine peripheral lymphocytes stained with ARG22784 anti-MHC Class II DR antibody [CC108] followed by Goat anti-Mouse IgG (H/L) (FITC).

---