

## ARG22709 anti-CD11a + CD18 antibody [CVS9]

Package: 50 µg  
Store at: -20°C

### Summary

Product Description	Mouse Monoclonal antibody [CVS9] recognizes CD11a + CD18 This antibody recognizes Equine homolog of the Human CD11a/CD18 cell surface antigen, a heterodimer expressed on all equine cells of haemopoietic origin. Studies have indicated that equine CD11a/CD18 has higher expression on some subpopulations of T-cells.
Tested Reactivity	Hrs
Tested Application	FACS, IHC-Fr
Host	Mouse
Clonality	Monoclonal
Clone	CVS9
Isotype	IgG1
Target Name	CD11a + CD18
Species	Horse
Immunogen	Equine leucocytes.
Conjugation	Un-conjugated
Alternate Names	Leukocyte adhesion glycoprotein LFA-1 alpha chain; LFA1A; LFA-1A; Integrin alpha-L; CD11A; Leukocyte function-associated molecule 1 alpha chain; LFA-1; CD11 antigen-like family member A; CD antigen CD11a

### Application Instructions

Application table	Application	Dilution
	FACS	1:25 - 1:200
	IHC-Fr	Assay-dependent
Application Note	FACS: Use 10 µl of the suggested working dilution to label 10 <sup>6</sup> cells in 100 µl. * The dilutions indicate recommended starting dilutions and the optimal dilutions or concentrations should be determined by the scientist.	

### Properties

Form	Liquid
Purification	Purification with Protein G.
Buffer	PBS and 0.09% Sodium azide.
Preservative	0.09% Sodium azide
Concentration	1 mg/ml
Storage instruction	For continuous use, store undiluted antibody at 2-8°C for up to a week. For long-term storage, aliquot and store at -20°C or below. Storage in frost free freezers is not recommended. Avoid repeated

freeze/thaw cycles. Suggest spin the vial prior to opening. The antibody solution should be gently mixed before use.

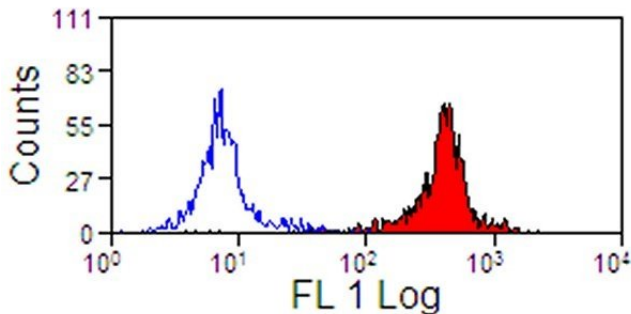
Note

For laboratory research only, not for drug, diagnostic or other use.

## Bioinformation

Gene Symbol	ITGAL
Gene Full Name	integrin, alpha L (antigen CD11A (p180), lymphocyte function-associated antigen 1; alpha polypeptide)
Background	ITGAL encodes the integrin alpha L chain. Integrins are heterodimeric integral membrane proteins composed of an alpha chain and a beta chain. This I-domain containing alpha integrin combines with the beta 2 chain (ITGB2) to form the integrin lymphocyte function-associated antigen-1 (LFA-1), which is expressed on all leukocytes. LFA-1 plays a central role in leukocyte intercellular adhesion through interactions with its ligands, ICAMs 1-3 (intercellular adhesion molecules 1 through 3), and also functions in lymphocyte costimulatory signaling. Two transcript variants encoding different isoforms have been found for this gene. [provided by RefSeq, Jul 2008]
Function	Integrin alpha-L/beta-2 is a receptor for ICAM1, ICAM2, ICAM3 and ICAM4. It is involved in a variety of immune phenomena including leukocyte-endothelial cell interaction, cytotoxic T-cell mediated killing, and antibody dependent killing by granulocytes and monocytes. [UniProt]
Calculated Mw	129 kDa
PTM	In resting T-cells, up to 40% of surface ITGAL is constitutively phosphorylated. Phosphorylation causes conformational changes needed for ligand binding and is necessary for activation by some physiological agents.

## Images



ARG22709 anti-CD11a + CD18 antibody [CVS9] FACS image

Flow Cytometry: Equine peripheral blood lymphocytes stained with ARG22709 anti-CD11a + CD18 antibody [CVS9], followed by Goat anti-Mouse IgG (FITC).