

ARG22707 anti-Integrin alpha E2 antibody [OX-62] (PE)

Package: 50 tests

Store at: 4°C

Summary

Product Description	PE-conjugated Mouse Monoclonal antibody [OX-62] recognizes Integrin alpha E2 This antibody recognizes OX-62 antigen, shown to be Rat alpha E2 integrin which is expressed by dendritic cells of dendritic epidermal T cells, intraepithelial lymphocytes in the small intestine and by cells of dendritic morphology in lymphoid organs, at sites where gamma delta T cells are present.
Tested Reactivity	Rat
Tested Application	FACS
Host	Mouse
Clonality	Monoclonal
Clone	OX-62
Isotype	IgG1
Target Name	Integrin alpha E2
Species	Rat
Immunogen	Density gradient enriched PVG rat thoracic duct dendritic cells.
Conjugation	PE
Alternate Names	CD103; HUMINAE; Integrin alpha-E; Mucosal lymphocyte 1 antigen; CD antigen CD103; HML-1 antigen; Integrin alpha-IEL

Application Instructions

Application table	Application	Dilution
	FACS	Neat

Application Note FACS: Use 10 µl of the suggested working dilution to label 10⁶ cells in 100 µl.
* The dilutions indicate recommended starting dilutions and the optimal dilutions or concentrations should be determined by the scientist.

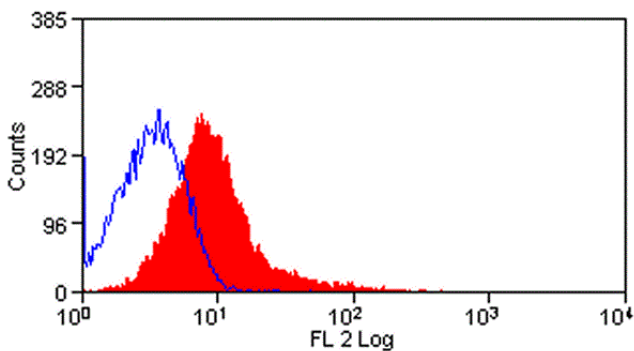
Properties

Form	Liquid
Purification	Purification with Protein G.
Buffer	PBS, 0.09% Sodium azide, 1% BSA and 5% Sucrose.
Preservative	0.09% Sodium azide
Stabilizer	1% BSA and 5% Sucrose
Storage instruction	Aliquot and store in the dark at 2-8°C. Keep protected from prolonged exposure to light. Avoid repeated freeze/thaw cycles. Suggest spin the vial prior to opening. The antibody solution should be gently mixed before use.
Note	For laboratory research only, not for drug, diagnostic or other use.

Bioinformation

Gene Symbol	ITGAE
Gene Full Name	integrin, alpha E
Background	Integrins are heterodimeric integral membrane proteins composed of an alpha chain and a beta chain. This gene encodes an I-domain-containing alpha integrin that undergoes post-translational cleavage in the extracellular domain, yielding disulfide-linked heavy and light chains. In combination with the beta 7 integrin, this protein forms the E-cadherin binding integrin known as the human mucosal lymphocyte-1 antigen. This protein is preferentially expressed in human intestinal intraepithelial lymphocytes (IEL), and in addition to a role in adhesion, it may serve as an accessory molecule for IEL activation. [provided by RefSeq, Jul 2008]
Function	Integrin alpha-E/beta-7 is a receptor for E-cadherin. It mediates adhesion of intra-epithelial T-lymphocytes to epithelial cell monolayers. [UniProt]
Calculated Mw	130 kDa

Images



ARG22707 anti-Integrin alpha E2 antibody [OX-62] (PE) FACS image

Flow Cytometry: Rat splenocytes stained with ARG22707 anti-Integrin alpha E2 antibody [OX-62] (PE) in red filled, stained with Mouse IgG1 isotype control (PE) in blue line.