

## ARG22661 anti-CD301 antibody [ER-MP23]

Package: 100 µg  
Store at: -20°C

### Summary

Product Description	Rat Monoclonal antibody [ER-MP23] recognizes CD301 This antibody recognizes murine CD301, a ~38 kDa cell surface protein, otherwise known as macrophage galactose N-acetylgalactosamine lectin (MGL) or dendritic cell asialoglycoprotein (DC-ASGPR).
Tested Reactivity	Ms
Tested Application	FACS, ICC/IF, IHC-Fr, IHC-P
Host	Rat
Clonality	Monoclonal
Clone	ER-MP23
Isotype	IgG2a
Target Name	CD301
Species	Mouse
Immunogen	Balb/c macrophage precursor cell hybrids.
Conjugation	Un-conjugated
Alternate Names	CD301; CD antigen CD301; Macrophage lectin 2; C-type lectin superfamily member 14; HML2; HML; CLECSF14; CLECSF13; C-type lectin domain family 10 member A; MGL

### Application Instructions

Application table	Application	Dilution
	FACS	1:100 - 1:200
	ICC/IF	Assay-dependent
	IHC-Fr	Assay-dependent
	IHC-P	Assay-dependent
Application Note	FACS: Use 10 µl of the suggested working dilution to label 10 <sup>6</sup> cells in 100 µl. IHC-P: Antigen Retrieval: Boil tissue section in Citrate buffer (pH 6.0) * The dilutions indicate recommended starting dilutions and the optimal dilutions or concentrations should be determined by the scientist.	

### Properties

Form	Liquid
Purification	Purification with Protein G.
Buffer	PBS and 0.09% Sodium azide.
Preservative	0.09% Sodium azide

Concentration	1 mg/ml
Storage instruction	For continuous use, store undiluted antibody at 2-8°C for up to a week. For long-term storage, aliquot and store at -20°C or below. Storage in frost free freezers is not recommended. Avoid repeated freeze/thaw cycles. Suggest spin the vial prior to opening. The antibody solution should be gently mixed before use.
Note	For laboratory research only, not for drug, diagnostic or other use.

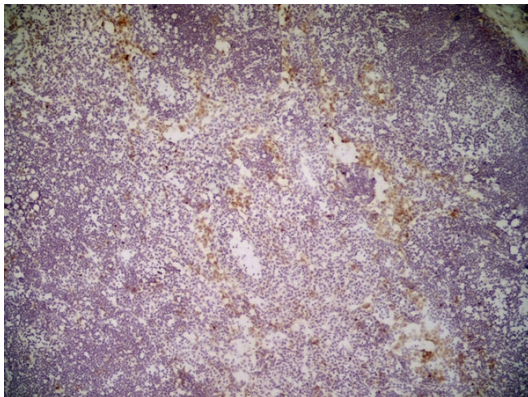
## Bioinformation

---

Gene Symbol	Clec10a
Gene Full Name	C-type lectin domain family 10, member A
Background	This gene encodes a member of the C-type lectin/C-type lectin-like domain (CTL/CTLD) superfamily. Members of this family share a common protein fold and have diverse functions, such as cell adhesion, cell-cell signalling, glycoprotein turnover, and roles in inflammation and immune response. The encoded type 2 transmembrane protein may function as a cell surface antigen. Two transcript variants encoding distinct isoforms have been identified for this gene. [provided by RefSeq, Jul 2008]
Function	Probable role in regulating adaptive and innate immune responses. Binds in a calcium-dependent manner to terminal galactose and N-acetylgalactosamine units, linked to serine or threonine. These sugar moieties are known as Tn-Ag and are expressed in a variety of carcinoma cells. [UniProt]
Calculated Mw	35 kDa

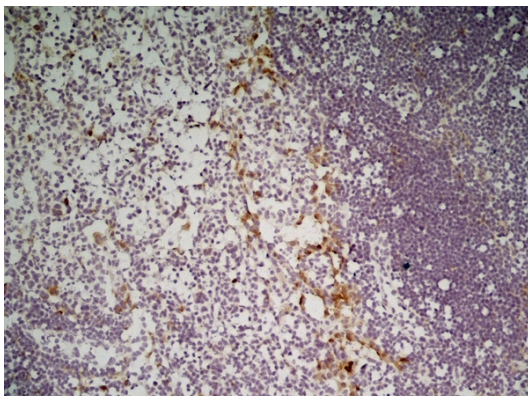
## Images

---



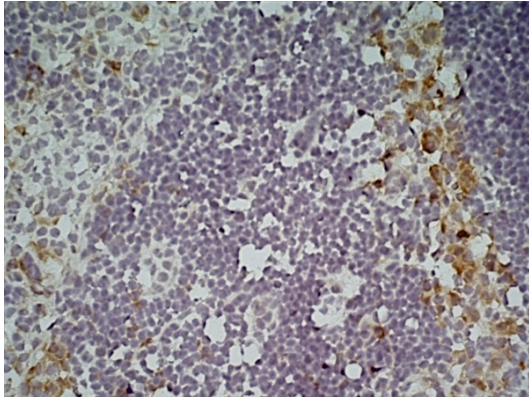
ARG22661 anti-CD301 antibody [ER-MP23] IHC-P image

Immunohistochemistry: Immunoperoxidase staining of a Mouse lymph node stained with ARG22661 anti-CD301 antibody [ER-MP23]. (Low power).



ARG22661 anti-CD301 antibody [ER-MP23] IHC-P image

Immunohistochemistry: Immunoperoxidase staining of a Mouse lymph node stained with ARG22661 anti-CD301 antibody [ER-MP23]. (Medium power).



ARG22661 anti-CD301 antibody [ER-MP23] IHC-P image

Immunohistochemistry: Immunoperoxidase staining of a Mouse lymph node stained with ARG22661 anti-CD301 antibody [ER-MP23]. (High power).