

ARG22659
anti-CD107a / LAMP1 antibody [4E9/11]Package: 100 µg
Store at: -20°C

Summary

Product Description	Mouse Monoclonal antibody [4E9/11] recognizes CD107a / LAMP1
Tested Reactivity	Pig
Tested Application	FACS, IHC-Fr, IHC-P, IP, WB
Host	Mouse
Clonality	Monoclonal
Clone	4E9/11
Isotype	IgG1
Target Name	CD107a / LAMP1
Species	Pig
Immunogen	Porcine alveolar macrophages.
Conjugation	Un-conjugated
Alternate Names	LGP120; CD107a; LAMPA; CD antigen CD107a; Lysosome-associated membrane glycoprotein 1; CD107 antigen-like family member A; LAMP-1; Lysosome-associated membrane protein 1

Application Instructions

Application table	Application	Dilution
	FACS	1:25 - 1:50
	IHC-Fr	Assay-dependent
	IHC-P	Assay-dependent
	IP	Assay-dependent
	WB	Assay-dependent
Application Note	FACS: Use 10 µl of the suggested working dilution to label 10 ⁶ cells in 100 µl. IHC-P: Antigen Retrieval: Boil tissue section in Sodium citrate buffer (pH 6.0) * The dilutions indicate recommended starting dilutions and the optimal dilutions or concentrations should be determined by the scientist.	

Properties

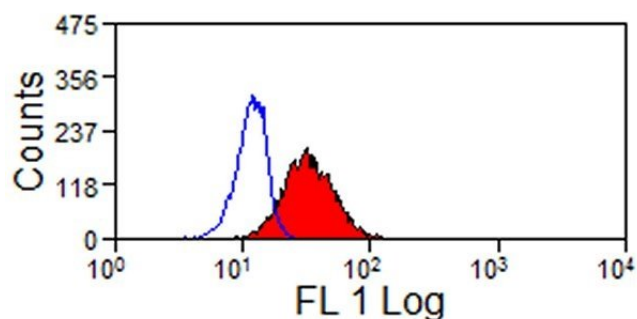
Form	Liquid
Purification	Purification with Protein G.
Buffer	PBS and 0.09% Sodium azide.
Preservative	0.09% Sodium azide
Concentration	1 mg/ml

Storage instruction	For continuous use, store undiluted antibody at 2-8°C for up to a week. For long-term storage, aliquot and store at -20°C or below. Storage in frost free freezers is not recommended. Avoid repeated freeze/thaw cycles. Suggest spin the vial prior to opening. The antibody solution should be gently mixed before use.
Note	For laboratory research only, not for drug, diagnostic or other use.

Bioinformation

Gene Symbol	LAMP1
Gene Full Name	lysosomal-associated membrane protein 1
Background	The protein encoded by this gene is a member of a family of membrane glycoproteins. This glycoprotein provides selectins with carbohydrate ligands. It may also play a role in tumor cell metastasis. [provided by RefSeq, Jul 2008]
Function	Presents carbohydrate ligands to selectins. Also implicated in tumor cell metastasis. [UniProt]
Research Area	Cancer antibody; Cell Death antibody; Controls and Markers antibody; Developmental Biology antibody; Metabolism antibody; Neuroscience antibody; Signaling Transduction antibody; Lysosome Marker antibody
Calculated Mw	45 kDa
PTM	O- and N-glycosylated; some of the 18 N-linked glycans are polylactosaminoglycans. The glycosylation of N-76 is essential for Lassa virus entry into cells.

Images



ARG22659 anti-CD107a / LAMP1 antibody [4E9/11] FACS image

Flow Cytometry: Pig peripheral blood granulocytes stained with ARG22659 anti-CD107a / LAMP1 antibody [4E9/11] followed by Goat anti-Mouse IgG (FITC). Membrane permeabilisation was used.